

# OFFICE FURNITURE SYSTEM **AIR**

## Designer– Gediminas Juška:

*„...i think that modern workplace  
should be functional and light like  
clean nature, clear water and fresh  
AIR“*



Executive furniture

**AIR**

## Furniture range

### Desks:

- H=780; top thickness: 120 mm
- H=740; top thickness: 25 mm

### Conference tables:

- H=780; top thickness: 120 mm
- H=740; top thickness: 25 mm

Cupboards, cabinets: mounted to the wall or free standing

## Functionality :

- Desktops have built-in power socket
- Wires and internet cables are inserted in the legs
- Space inside the desktop can be used for manager's correspondence; drawers – for stationery and documents
- Cupboards have remote controlled doors



**Design -**

Light, simple, pure.

**Materials -**

environmentally-friendly

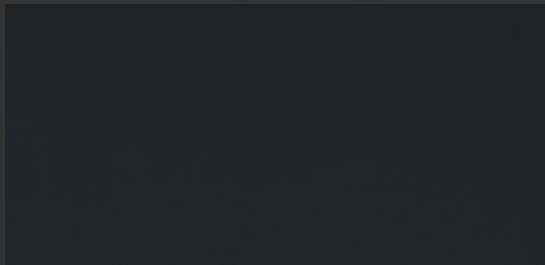


## New, ecological desktop (25 mm) finish

- R1 - brown marmoleum (edging-white)

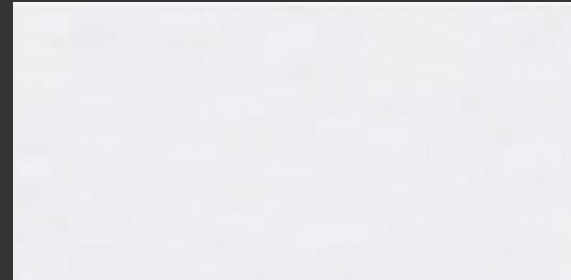


- G1 – grey marmoleum (edging- white)



## Colours for legs

- E- white



- H- chrome

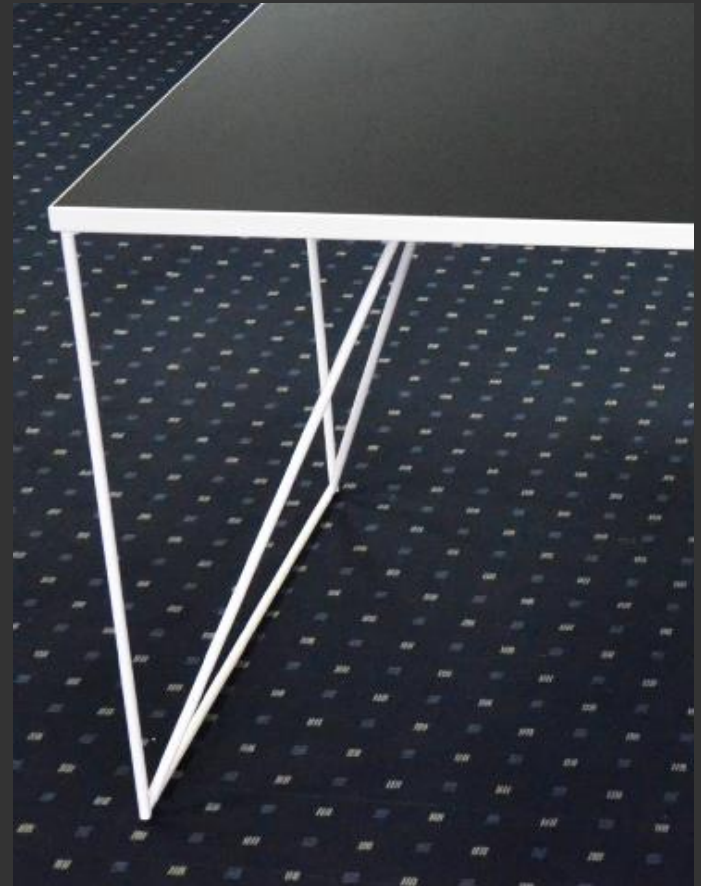


## Important!

Desktops in R1 and G1 finishes can be edged only with white ABS edge

## Recomendation:

To combine marmoleum with white legs





## Finishes (desktop)

- K- birch veneer



- R- walnut veneer

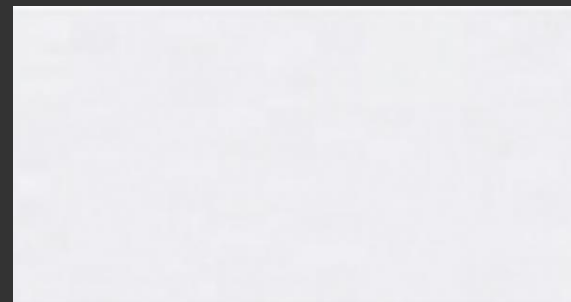


## Colours for legs

- H- chrome



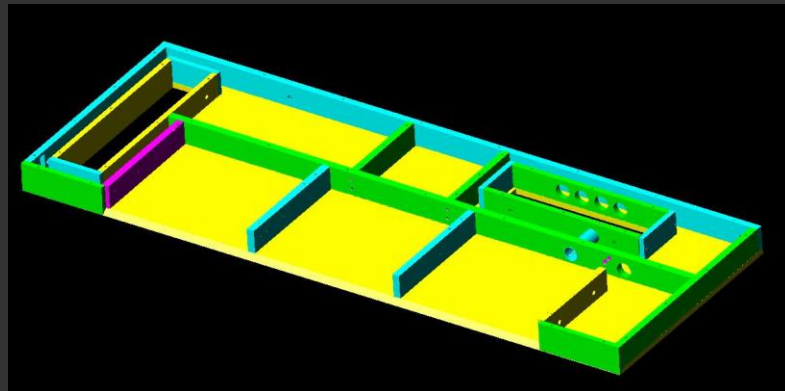
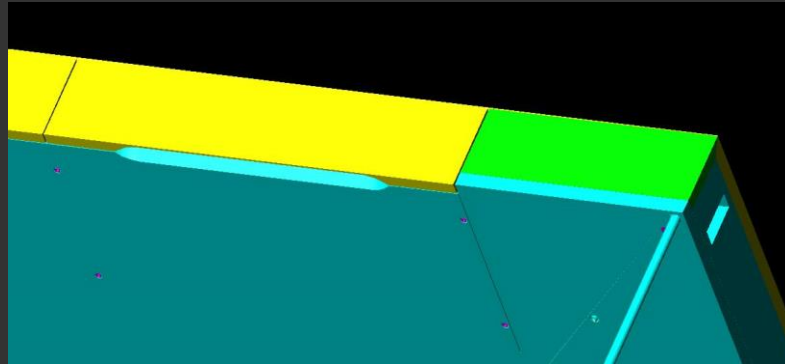
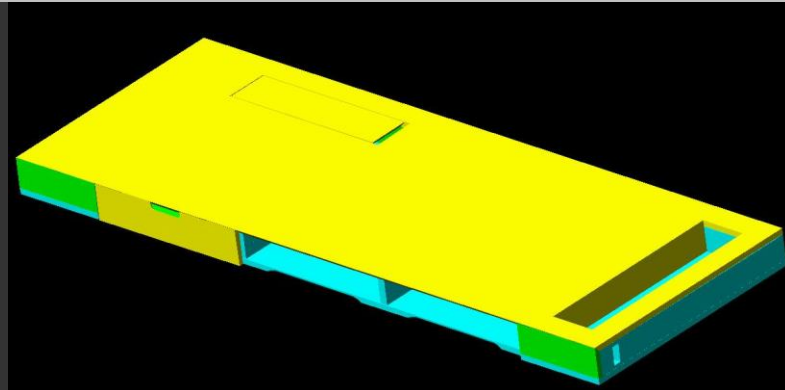
- E- white



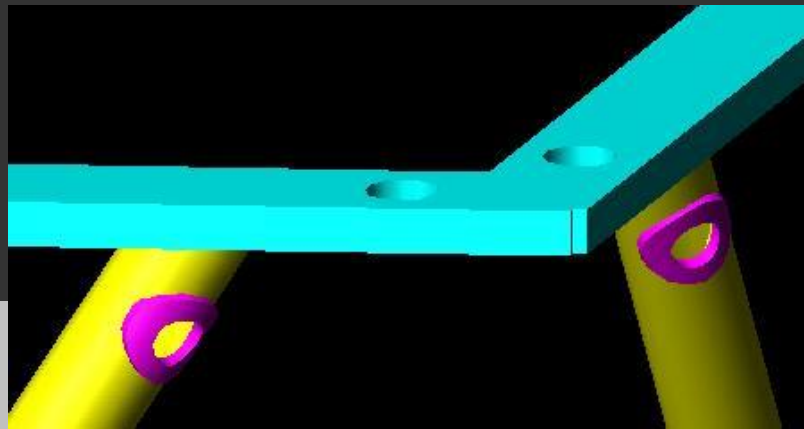
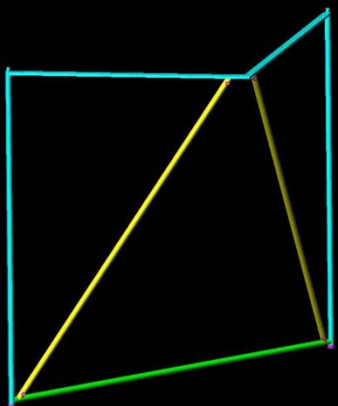
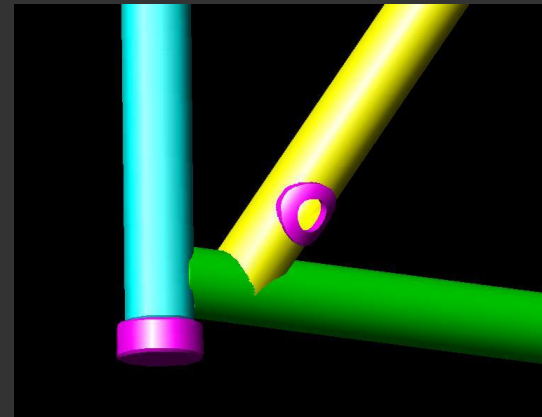
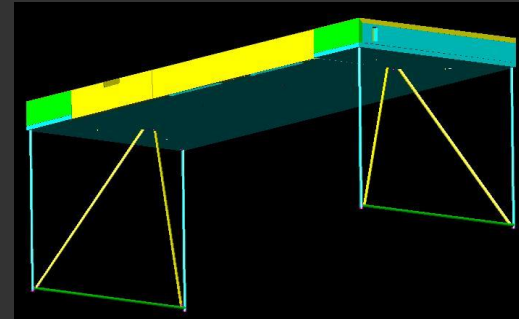
Instead of handles there is milled cavity.

Metal legs are made of 12mm diameter tube.  
They have leveling feet for uneven floor  
(+10mm);

Drawers and hinges have soft closing system



- In executive and conference tables H120mm wires and internet cables are hidden inside the legs. Through the tubes wires access to the power socket (3 power sockets and 1 internet). The cover of the socket box has soft closing system.
- There are quick installation clips at the end of wires that are sticking out of the legs which can be connected easily. But it is recommended that the final wiring should be done by the professional electrician.
- The wires of executive tables 25mm come out from the legs and go under the desktop. They can be fixed with plastic cable clips.



# AIR technical information– Executive storages

The technology of executive's shelving and storing are identical to the table - "Cube shape".

The back panels are the same finish as carcasses (veneer) so they can stand in open space.

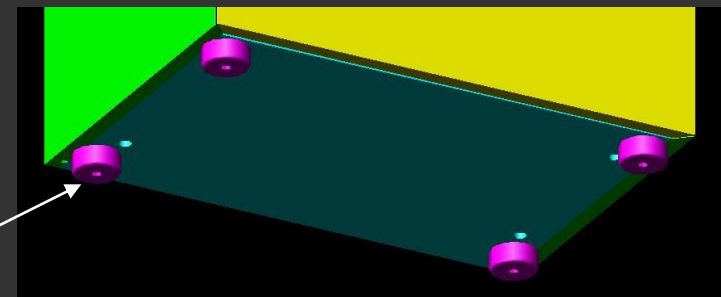
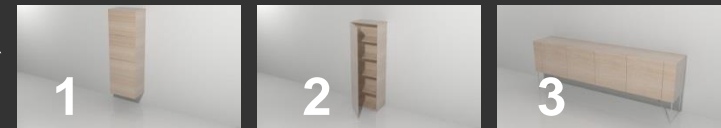
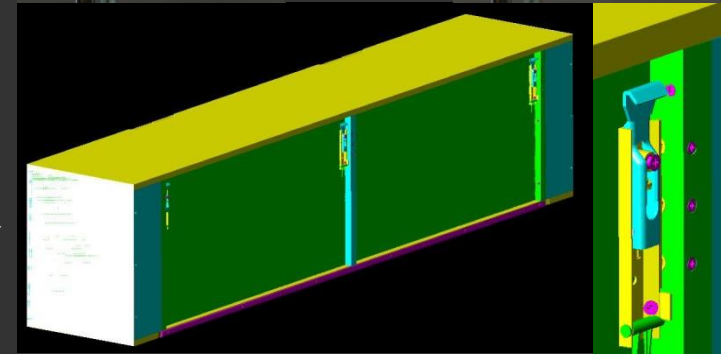
Wall mounted cabinets and shelves are mounted with adjustable fixings and metal angles at the bottom.

Three different door opening types:

1. Electrical (Blum Servo drive);
2. Mechanical (Blum Tip on);
3. With handle space (Blum Soft close).

All drawers have soft closing system (Blum Soft close)

Cabinets have leveling feet H 23mm. (+ 10 mm)



Top door have two opening bottoms:

1. Stationary - mounted on the shelf;
2. Mobile – used as a remote control or can be fixed under the desk in convenient location.

Bottom drawer opens and closes when clicking it.



Power socket (220V) is necessary for a cabinet. It would be perfect if the power socket could be above the cabinet top or under the bottom.



Office furniture system

**AIR**

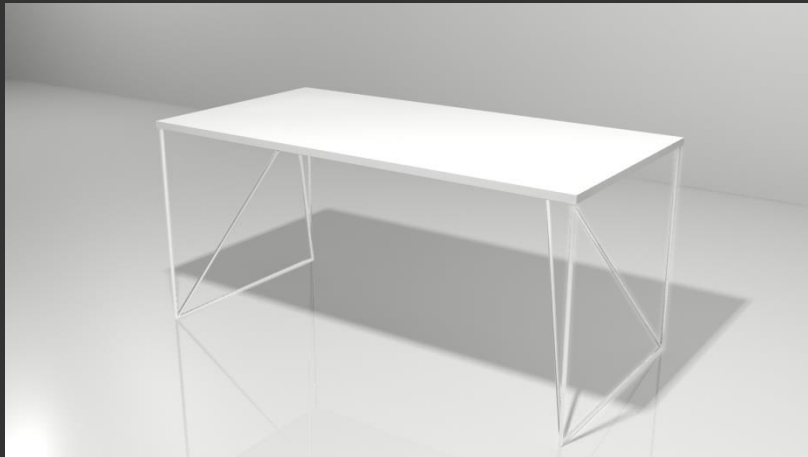




- Designer recommends to combine different finishes and colors.



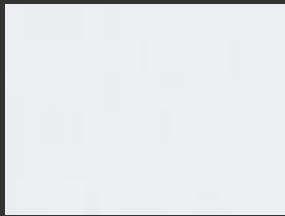
# Spectrum of furniture



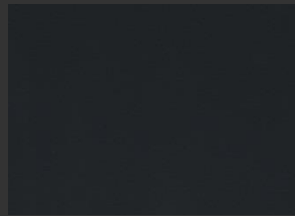


## Finishes (desktop)

- M1 – white



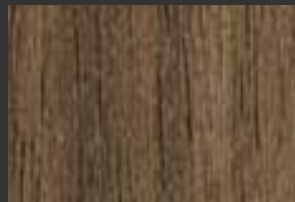
- N1 -anthracite



- P- birch

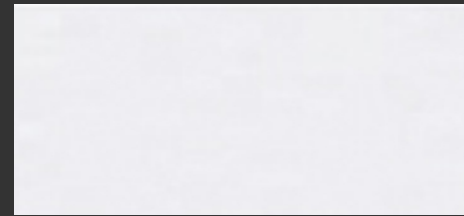


- U - walnut

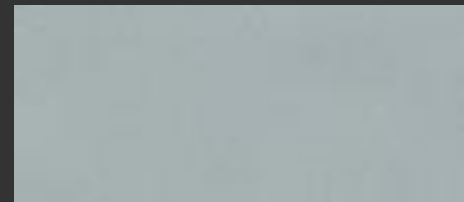


## Colours for legs

- E- white



- M- metallic



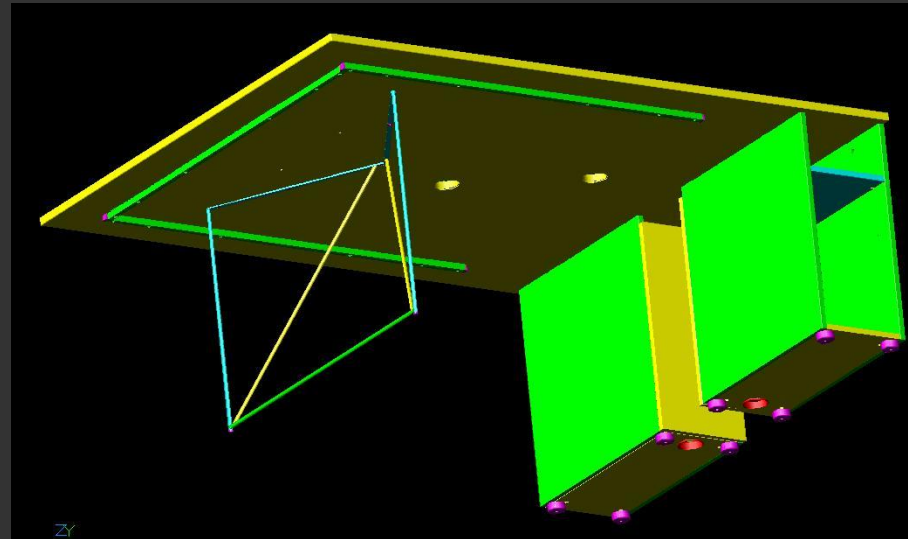
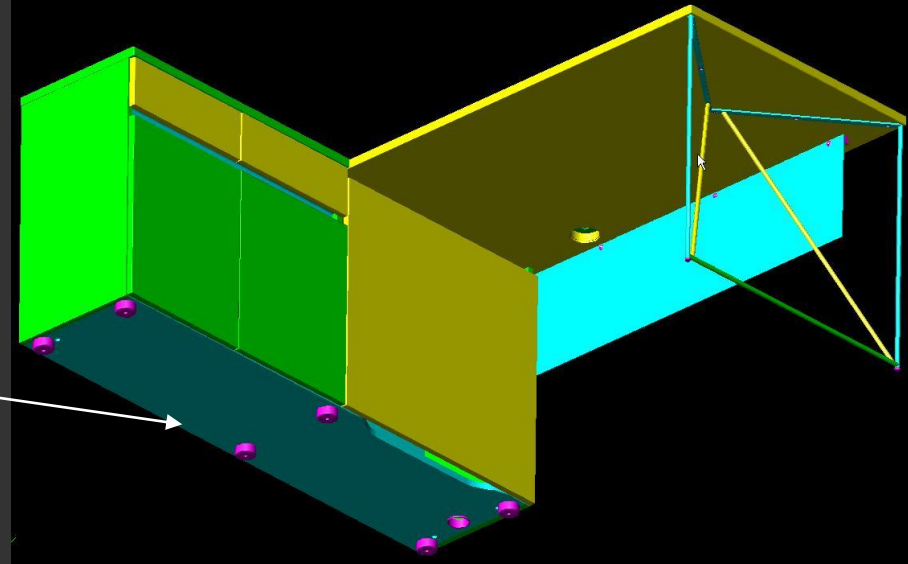
Desktops - 25 mm melamine edged with 3 mm ABS edge

To ensure stability there is metal frame (pipe) 20x20mm under all desktops.

Metal legs have leveling feet (+ 10mm).  
Cabinet feet - H 23 mm (+10mm)  
Cabinet drawers are metal sided, L350mm.

Perspex screen S 3mm is inserted into aluminium groove.  
Perspex glass modesty panel 3mm is fixed to the metal frame 20x20.

Benches are assembled on common leg.



Carcass and front is made of 18mm melamine;

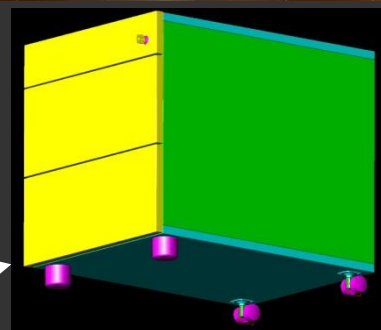
Doors are without handles (4mm wider than the carcass);

Hinges have soft closing system;

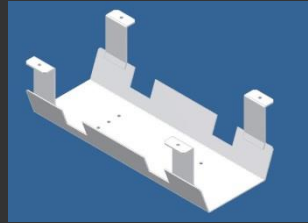
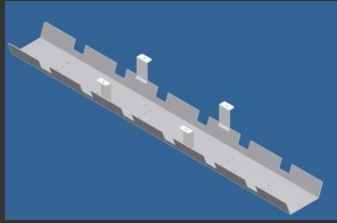
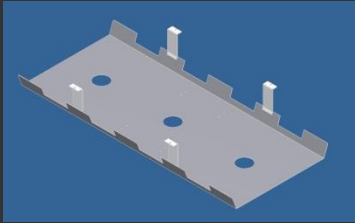
Leveling feet H 23 mm (+10mm);

Pedestals have metal sided drawers.  
Soft closing runners are available.  
Pedestals have two legs and two castors at the back (H 43 mm);

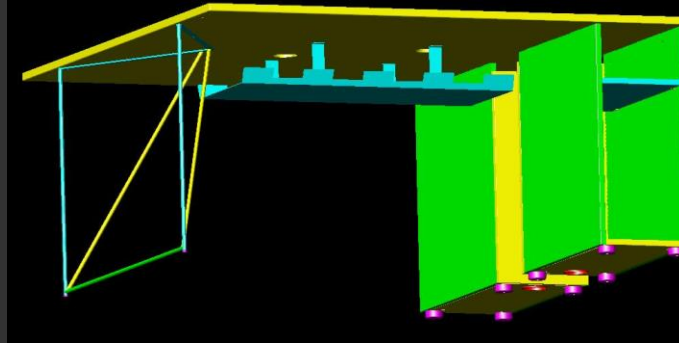
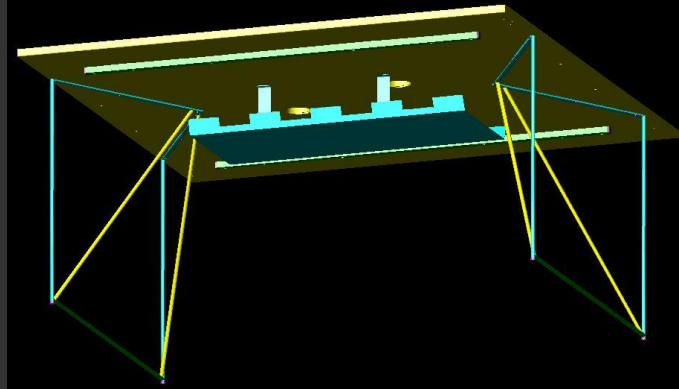
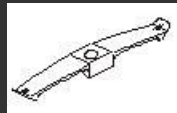
Cabinets are fixed onto the desktop, door open from different sides – they are designed to suit beches.



Cable port (D 80 mm) is used for 25 mm desktops (colourless plastic in grey outline)  
 Plastic box (aluminium color) available with a socket block is used for conference tables.  
 Available NOVA cable trays:



Both, wide and narrow cable tray fits for benches  
 For single desks fit only narrow cable trays  
 Wires can be fixed with cable clips additionally.



Conference tables and storage

**AIR**

## Spectrum of furniture



According to the designer, in modern office there should be less cabinets, only necessary models.

All wardrobes, cabinets, and pedestals are produced without handles.

Creating a clean, solid image, to avoid unnecessary environmental "noise".





## Spectrum of furniture

In executive conference tabletop there is a space for brochures, papers, pencils. Wires and internet cables are hidden like in executive tables. Little piece of executive's „land“ – space inside the desktop - can be used for keeping mineral water, or papers to remain the table clean and uncluttered.

As meetings may be held at different structural levels, therefore rooms, furniture and their materials differ.



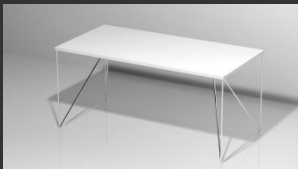
## Coding (I)

- Coding for desks:

white desktop

DIA180-M1E

White legs



- Coding for open cupboards:



White desktop

DIA162-M1N1E

White legs

Anthracite cupboard



## Coding (II)

- Coding for tables with closed cupboards:

White desktop and cupboard carcass

DIA162-**M1**N1E

White legs

Anthracite door/drawers



- Coding for storages and pedestals:

White carcass

DIE200-N1M1

Anthracite door/drawers



# AIR EXECUTIVE desk – the winner of Lithuanian national design prize "GERAS DIZAINAS 2012".



GOOD LUCK