

# JAZZ Silent Box acoustic furniture

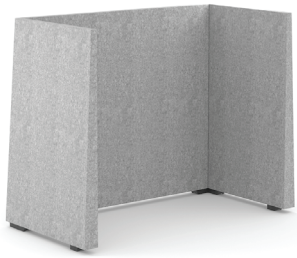
Design by Christina Strand and Niels Hvass | Denmark



## FEATURES

- Walls filled with sound absorbing material

## TECHNICAL INFORMATION



### Acoustic walls

#### Walls frame

- Made of 18 mm medium density fibreboard and 18 mm chipboard;
  - Coated with specially shaped foam VB2540 (density: 25 kg/m<sup>3</sup>) from outside and acoustic foam from the inside.
- Top and sides softened with VB2240 3 mm foam.

#### Legs

- Made of MDF painted in black colour, H=39 mm.



### Poufs

#### Pouf frame

- Made of 15 mm plywood and 15 mm chipboard.

#### Seat

- Upper part is foam coated HR5050 (density: 48-51 kg/m<sup>3</sup>), lower layer of the foam HR3030 (density: 28-32 kg/m<sup>3</sup>); frame sides are foam coated HR3030 (density: 28-32 kg/m<sup>3</sup>).

#### Base

- Black painted rectangular metal base (50x20x1,5 mm) with 4 plastic glides (5 mm);
- Ability to order linking parts (2 pcs.), which allow linkage of the poufs to lines.

#### Cushion

- Made of foam (HR3538), upholstered with fabric;
- Zipper sewn into the lower part.

#### Power socket (AGS183)

- 1 AC power socket 100 - 230 V;
- Dimensions: 90x66 mm;
- Mounting in Ø80 mm cut-out;
- Power socket standards: EU, FR, UK, US, CH;
- Cable length: 3,8 m.

#### Power socket (AGS184)

- 1 AC power socket 100 - 230 V;
- Integrated USB fast charger (USB Type A+C, max 5,6A);
- 1 cable guide for multimedia cable;
- Mounting in Ø80 mm cut-out;
- Dimensions: Ø90x66 mm;
- Power socket standards: EU, FR, UK, US, CH;
- Cable length: 3,8 m.



### Desk and linking central wall

#### Desktop

- 1200x650x663 mm, made of 25 mm LMDF;
- Power socket with 4 wire management holes is mounted into the desktop (only for AGS183);
- Metal box for wire management is fixed under the desktop: 185x150 mm, H=100 mm if there is a power socket.

#### Table

- Made of metal tube: 70x20x2 mm;
- Black painted leg glides are made of MDF, H=16 mm.

#### Wall frame

- Made of MDF (18 mm) and MFC (melamine, 18 mm);
- Fittings are placed on the side to attach other walls.

#### Foam

- Frame is coated with specially shaped foam from outside and acoustic foam from the inside.

#### Wall legs

- Black painted MDF legs, H=39.

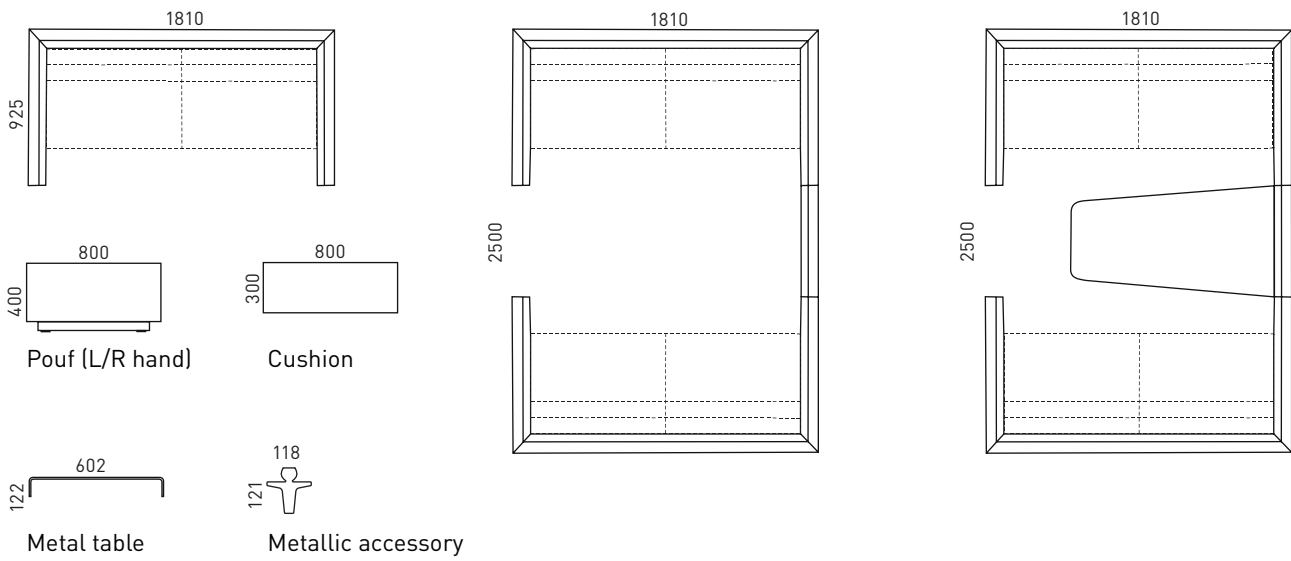
#### Monitor holder

- Three height adjustable positions;
- VESA standards – 75x75, 100x100 mm;
- Recommended weight up to 10 kg.
- Bolts for flat screen assembly are not included.

#### Wire management

- Space with zippers for wire management.

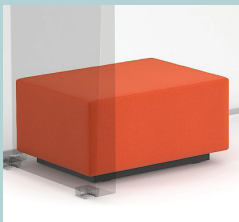
## RANGE



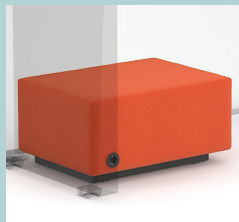
## GARANTIE

- 5 Jahre, außer die elektrischen Teile (2 Jahre)

### Optional



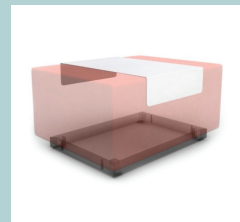
Pouf



Pouf with power socket



Cushion



Metal table for poufs



Metal accessory "Do not disturb man"