

# NOVA desk screens



## FEATURES

- Screens with metal frame or fabric
- Designed for table combinations (benches) and individual tables

## QUALITY STANDARD

- EN 1023-1:1996
- EN 1023-2:2000
- EN 1023-3:2000

## TECHNICAL INFORMATION



### FABRIC WITH METAL FRAME

#### Screen composition

- Screen frame (20x20 mm): bottom and sides – tube, top – U profile;
- Made of 12 mm chipboard;
- Covered with VB2240 3 mm foam;
- Upholstered with fabric.



### FABRIC

#### Screen composition

- Made of 16 mm chipboard;
- Covered with VB2240 3 mm foam;
- Upholstered with fabric.

#### Fixing

- For NOVA U / A / O / H screens are fixed to the desktop with wood screws.

## RANGE

NOVA U, NOVA A, NOVA O, NOVA H

### FABRIC WITH METAL FRAME



700, 710, 800, 810, 1200, 1400, 1440  
1600, 1640, 1800

### FABRIC



700, 800, 1200, 1400, 1600, 1800

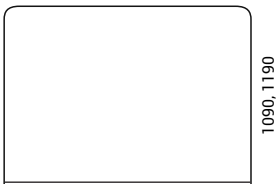


1200, 1400, 1600, 1800



710, 800, 810

### Fabric with bottom metal frame



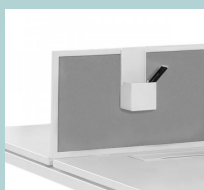
1640

## Optional

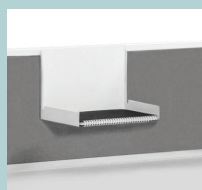
Metal trays hanged on the screen (for fabric and with metal frame screens):



Small tray



Pencil jar



Mail tray for A4 documents