

rivestimenti  
upholstery  
**2024**

# JET / CAT. F

## IT

### Composizione

100 % Poliestere - Trevira CS®

### Peso

gr./m<sup>2</sup> 260 ± 5 %

### Altezza

cm 140

### Abrasione - Test Martindale

UNI EN ISO 12947/2 ± 10 % 65.000 cicli

### Solidità alla luce

UNI EN ISO 105-B02 6

### Pulizia

Non spazzolare e usare con regolarità l'aspirapolvere.  
Pulizia a secco professionale, in alternativa pulire con un panno umido.

### Differenze colore

Leggere differenze di colori fra un bagno e l'altro sono da considerarsi normali.

### Test reazione al fuoco

Italia - Classe 1M

Francia - Classe M1

Germania - Classe B1 DIN 4102

UK - BS 5852 CRIB 5

USA - California TB 117

UNI EN 1021/1-2

IMO Res. A 652 (16) Part 8 / A 471 (XII) Part 7

# JET / CAT. F

## UK

### Composition

100 % Polyester - Trevira CS®

### Weight

gr./m<sup>2</sup> 260 ± 5 %

### Width

cm 140

### Abrasion test - Martindale

UNI EN ISO 12947/2 ± 10 % 65.000 turns

### Lightfastness

UNI EN ISO 105-B02 6

### Cleaning

Do not brush. Only use a vacuum-cleaner regularly.  
Professionally dry clean or wipe clean with a damp cloth.

### Colour differences

Slight differences between colour batches have to be considered normal.

### Fire reaction test

Italy - Class 11M

France - Class M1

Germany - Class B1 DIN 4102

UK - BS 5852 CRIB 5

USA - California TB 117

UNI EN 1021/1-2

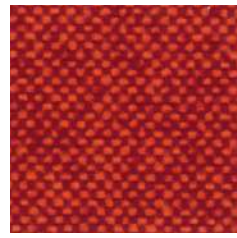
IMO Res. A 652 (16) Part 8 / A 471 (XII) Part 7



# JET / CAT. F



4051



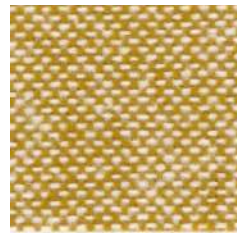
9402



4018



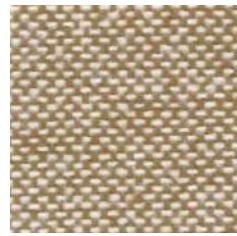
9110



9305



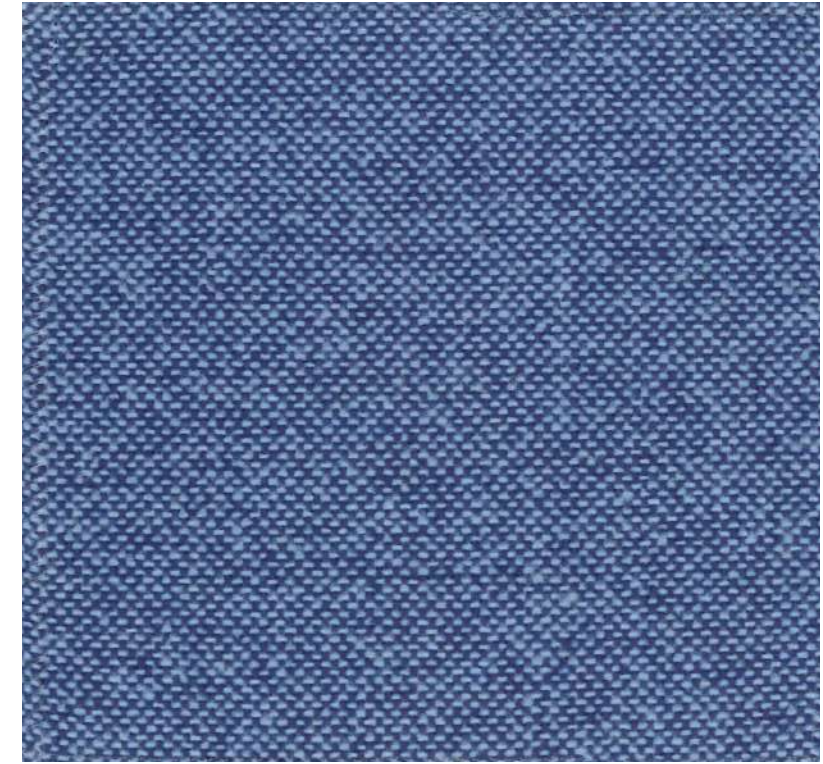
7025



9703



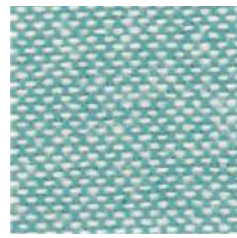
7034



9601



3019



9610



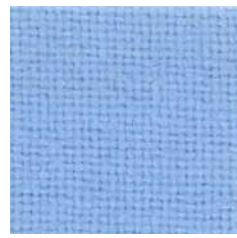
6007



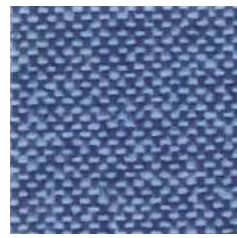
6091



2024



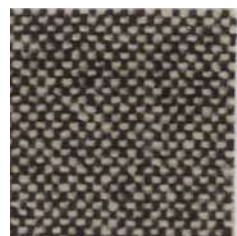
6056



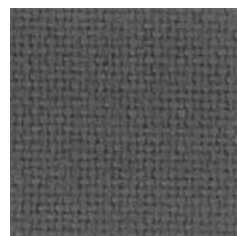
9601



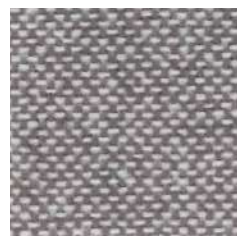
6013



9108



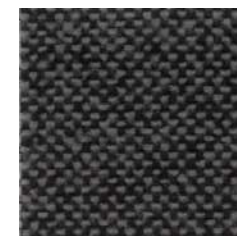
8009



9804



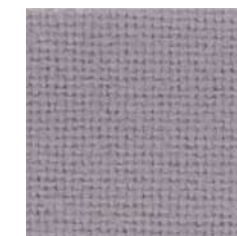
8033



9281



8017



8078



6095

# PLANET - SURROUND / CAT. F

**Diemme.**

# PLANET - SURROUND / CAT. F

## IT

### Composizione

87,5 % PVC, 12,5 % Cotone

L'articolo è trattato con prodotto antibatterico, è anallergico e impermeabile.

### Peso

gr./m2 640

### Altezza

cm 140

### Abrasion - Test Martindale

UNI EN ISO 5470-2 100.000 cicli

### Solidità alla luce

UNI EN ISO 105-B02 6/7 (scale 1-8)

### Pulizia

Spolverare delicatamente e in caso di macchie lievi passare la superficie con un panno umido o con una soluzione di detergente neutro, risciacquando con acqua senza strizzare. Per le macchie localizzate e più ostinate si consiglia di seguire le seguenti indicazioni: disciogliere tempestivamente la macchia con alcol etilico diluito (liquido incolore) in acqua al 20% tamponare e trattare successivamente con una soluzione di detergente neutro, risciacquare bene.

## EN

### Composition

87,5 % PVC, 12,5 % Cotton

The article contains antibacterial agent, it is anti-allergic and waterproof.

### Weight

gr./m2 640

### Width

cm 140

### Abrasion - Test Martindale

UNI EN ISO 12947-2 100.000 turns

### Lightfastness

UNI EN ISO 105-B02 6/7 (scale 1-8)

### Cleaning

Dust gently and in case of light stains pass the surface with a damp cloth or a neutral detergent, rinse with water without squeezing. The following instructions are recommended for small located and more obstinate stains: dissolve immediately with clear ethylic alcohol diluted in water to 20%, dab and then treat with a neutral detergent solution. Rinse abundantly.

I colori chiari non devono essere messi a contatto con tessuti e capi d'abbigliamento trattati con coloranti non fissati, o con scarse solidità di tintura, onde evitare macchie ed aloni di coloranti di cui non possiamo garantire la pulitura.

### Differenze colore

Leggere differenze di colori fra una partita e l'altra sono da considerarsi normali.

### Test reazione al fuoco

- \* Italia - UNI 9175 Classe 1IM
- Francia - NF P 92 503-507 M2
- Germania - DIN 4102 B2
- UK - BS 5852 1-2 CRIB 5
- UNI EN 1021/1-2
- USA - TB 117:2013
- IMO FTP CODE 2010

- \* Omologazione ministeriale al fuoco in classe 1 IM con rivestimento PLANET-SURROUND e poliuretano ignifugo disponibile sui prodotti (Cfr listino).

To avoid permanent stains, the lighter colours of the article should not be brought into contact with textiles and clothing coloured with unfixed dyes. We cannot guarantee the ability to remove unknown dyes from light coloured product.

### Colour differences

Slight color differences between one lot and another have to be considered within commercial tolerance.

### Fire reaction test

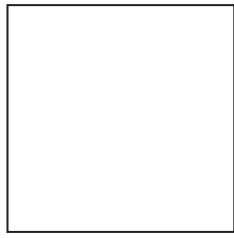
- Italy - UNI 9175 Class 1IM
- France - NF P 92 503-507 M2
- Germany - DIN 4102 B2
- UK - BS 5852 1-2 CRIB 5
- UNI EN 1021/1-2
- USA - TB 117:2013
- IMO FTP CODE 2010



# PLANET - SURROUND / CAT. F



125



101



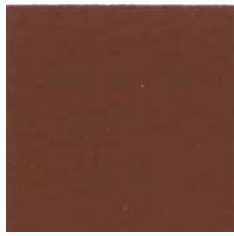
136



110



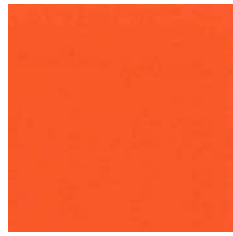
121



126



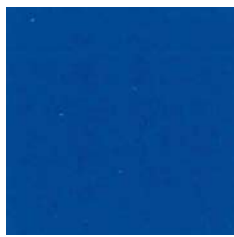
118



120



109



116



135



129



114



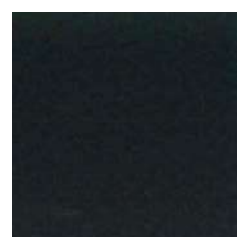
103



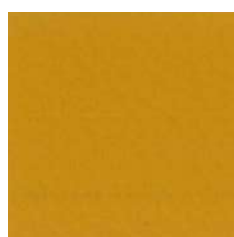
123



106



133



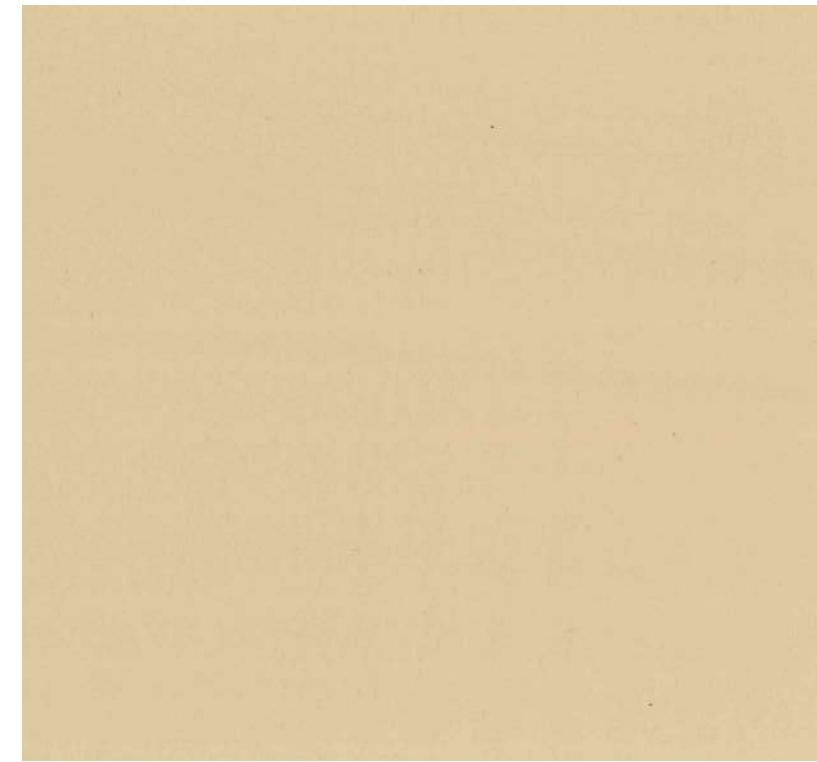
104



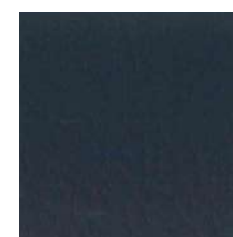
122



132



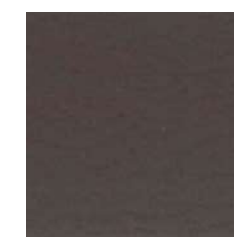
110



131



117



119



111

# MIRAGE / CAT. G

## IT

### Composizione

100 % Poliestere FR - Trevira CS

### Peso

gr./m<sup>2</sup> 330 ± 5 %

### Altezza

cm 140

### Abrasion - Test Martindale

UNI EN ISO 12947 ± 20 % 100.000 cicli

### Solidità alla luce

Xenotest UNI EN ISO 105-B02 6 ± 1

### Pulizia

Non spazzolare e usare con regolarità l'aspirapolvere.  
Pulizia a secco professionale, in alternativa pulire con un panno umido.

### Differenze colore

Leggere differenze di colori fra un bagno e l'altro sono da considerarsi normali.

### Test reazione al fuoco

\* Italia - Classe 1IM  
Francia - Classe M1  
Germania - Classe B1 DIN 4102  
UK - BS 5852 CRIB  
USA - California TB 117-2013  
UNI EN 1021/1-2

\* Omologazione ministeriale al fuoco in classe 1 IM con rivestimento MIRAGE e poliuretano ignifugo disponibile sui prodotti (Cfr listino).

# MIRAGE / CAT. G

## UK

### Composition

100 % Polyester FR - Trevira CS

### Weight

gr./m<sup>2</sup> 330 ± 5 %

### Width

cm 140

### Abrasion test - Martindale

UNI EN ISO 12947/2 ± 20 % 100.000 turns

### Lightfastness

Xenotest UNI EN ISO 105-B02 6 ± 1

### Cleaning

Do not brush. Only use a vacuum-cleaner regularly.  
Professionally dry clean or wipe clean with a damp cloth.

### Colour differences

Slight differences between colour batches have to be considered normal.

### Fire reaction test

Italy - Class 1IM  
France - Class M1  
Germany - Class B1 DIN 4102  
UK - BS 5852 CRIB  
USA - California TB 117-2013  
UNI EN 1021/1-2

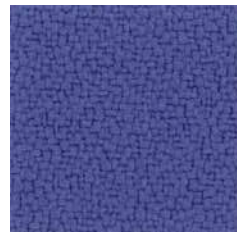
# MIRAGE / CAT. G



119



573



263



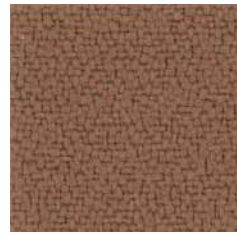
651



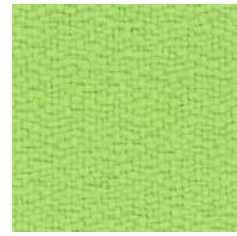
516



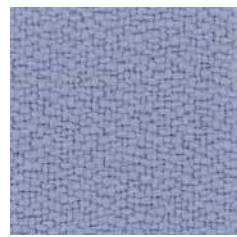
066



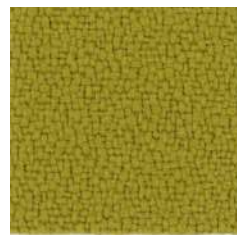
534



463



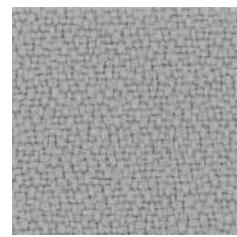
377



426



231



629



533



236



411



120



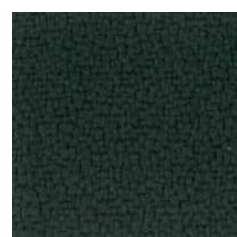
175



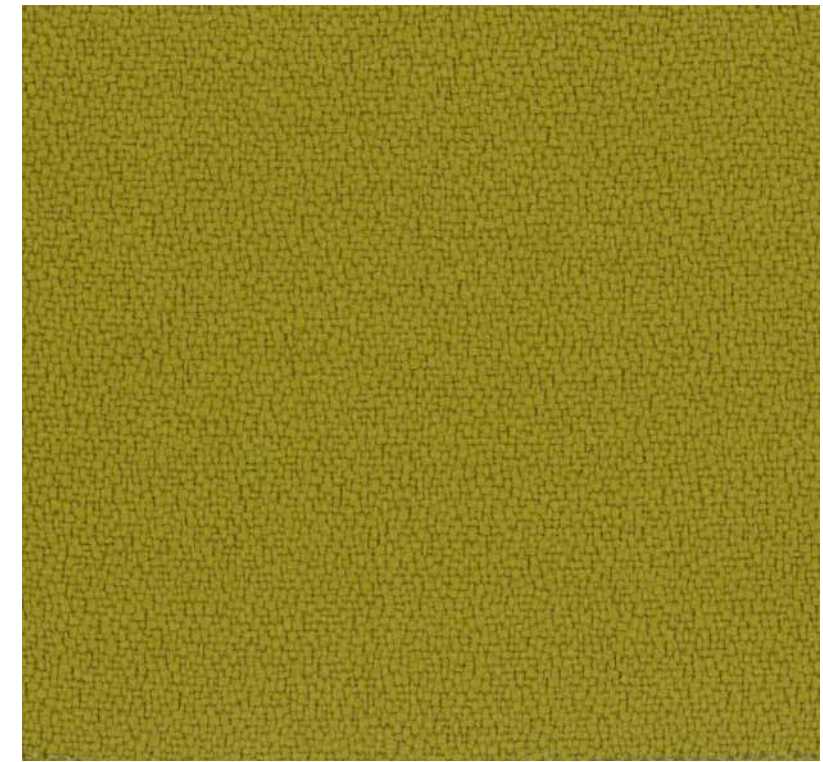
331



053



496



426

# ONE / CAT. G

## IT

### Composizione

100 % Poliestere Riciclato

### Peso

gr./m<sup>2</sup> 350 ± 5 %

### Altezza

cm 150

### Abrasione - Test Martindale

UNI EN ISO 12947/2 ± 10 % 100.000 cicli

### Solidità alla luce

UNI EN ISO 105-B02 6

### Pulizia

Non spazzolare e usare con regolarità l'aspirapolvere.

Pulizia a secco professionale, in alternativa pulire con un panno umido.

### Differenze colore

Leggere differenze di colori fra un bagno e l'altro sono da considerarsi normali.

### Test reazione al fuoco

Italia - Classe 1

UK - BS 5852 CRIB 5

UK - BS 7176 CLASS MEDIUM HAZARD

USA - California TB 117-2013

UNI EN 1021/1-2

# ONE / CAT. G

## UK

### Composition

100 % Recycled Polyester

### Weight

gr./m<sup>2</sup> 350 ± 5 %

### Width

cm 150

### Abrasion test - Martindale

UNI EN ISO 12947/2 ± 10 % 100.000 turns

### Lightfastness

UNI EN ISO 105-B02 6

### Cleaning

Do not brush. Only use a vacuum-cleaner regularly.

Professionally dry clean or wipe clean with a damp cloth.

### Colour differences

Slight differences between colour batches have to be considered normal.

### Fire reaction test

Italy - Class 1

UK - BS 5852 CRIB 5

UK - BS 7176 CLASS MEDIUM HAZARD

USA - California TB 117-2013

UNI EN 1021/1-2

**Diemme.**





# ONE / CAT. G



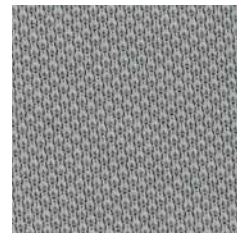
6512



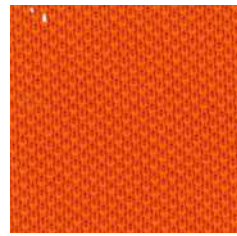
1006



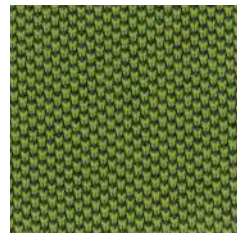
6024



8032



4030



7521



4079



6555



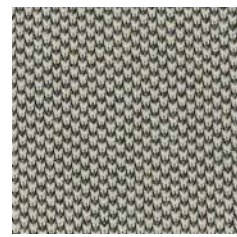
2519



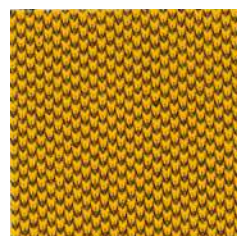
4566



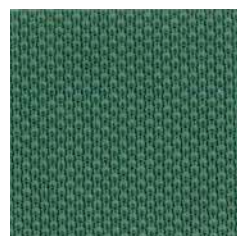
7504



1506



3530



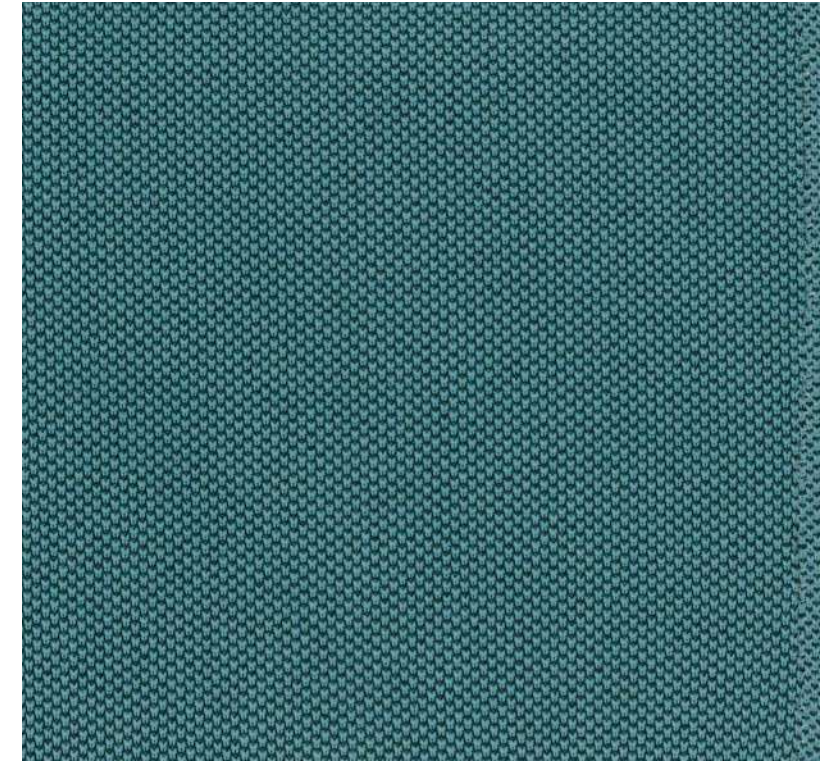
7026



4528



8033



7504

# ERA / CAT. S

## IT

### Composizione

100 % Poliestere

### Peso

gr./m<sup>2</sup> 320 ± 5 %

### Altezza

cm 140

### Abrasion - Test Martindale

UNI EN ISO 12947-2 100.000 cicli

### Solidità alla luce

UNI EN ISO 105-B02 5

### Pulizia

Non spazzolare e usare con regolarità l'aspirapolvere.

Pulizia a secco professionale, in alternativa pulire con un panno umido.

### Differenze colore

Leggere differenze di colori fra un bagno e l'altro sono da considerarsi normali.

### Test reazione al fuoco

BS 7176 LOW HAZARD - MEDIUM HAZARD

BS 5852 IGNITION SOURCE 5 WITH ENVIRO FLAM 5

BS 7176 CLASS MEDIUM HAZARD

UK - BS 7176 CLASS MEDIUM HAZARD

UNI EN 1021-1 (CIGARETTE) - 2 (MATCH)

# ERA / CAT. S

## UK

### Composition

100 % Polyester

### Weight

gr./m<sup>2</sup> 320 ± 5 %

### Width

cm 140

### Abrasion test - Martindale

UNI EN ISO 12947-2 100.000 turns

### Lightfastness

UNI EN ISO 105-B02 5

### Cleaning

Do not brush. Only use a vacuum-cleaner regularly.

Professionally dry clean or wipe clean with a damp cloth.

### Colour differences

Slight differences between colour batches have to be considered normal.

### Fire reaction test

BS 7176 LOW HAZARD - MEDIUM HAZARD

BS 5852 IGNITION SOURCE 5 WITH ENVIRO FLAM 5

BS 7176 CLASS MEDIUM HAZARD

UK - BS 7176 CLASS MEDIUM HAZARD

UNI EN 1021-1 (CIGARETTE) - 2 (MATCH)

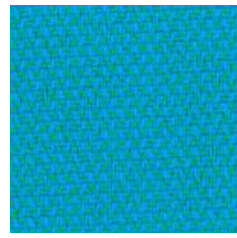
# ERA / CAT. S



CSE29



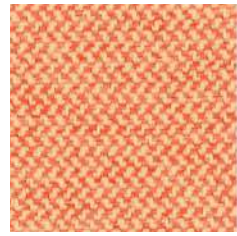
CSE02



CSE10



CSE01



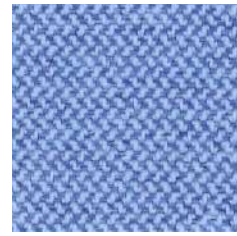
CSE25



CSE16



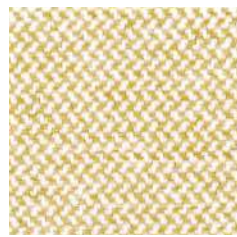
CSE21



CSE08



CSE19



CSE33



CSE05



CSE03



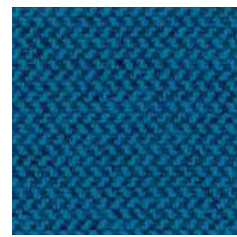
CSE20



CSE09



CSE11



CSE15



CSE06



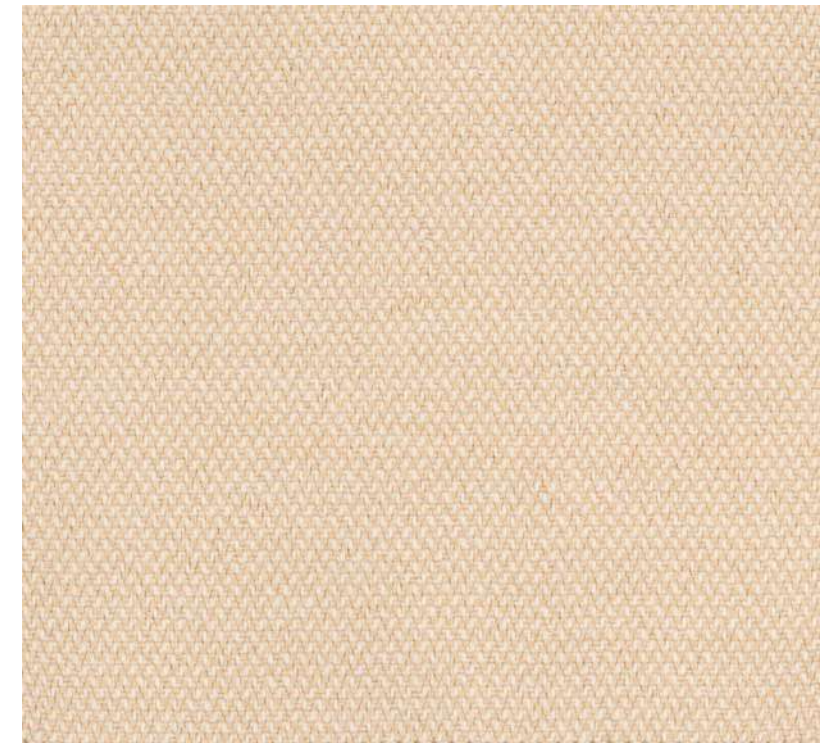
CSE13



CSE14



CSE23



CSE01

# ROCCIA / CAT. S

## IT

### Composizione

100 % Poliestere Trevira CS

### Peso

gr./m<sup>2</sup> 350 ± 5 %

### Altezza

cm 140

### Abrasion - Test Martindale

UNI EN ISO 12947-2 ± 10 % 70.000 cicli

### Solidità alla luce

Xenotest UNI EN ISO 105-B02 6

### Pulizia

Non spazzolare e usare con regolarità l'aspirapolvere.  
Pulizia a secco professionale, in alternativa pulire con un panno umido.

### Differenze colore

Leggere differenze di colori fra un bagno e l'altro sono da considerarsi normali.

### Test reazione al fuoco

Italia - Classe 1

Francia - Classe M1

Germania - Classe B1 DIN 4102

UK - BS 5852 CRIB 5

UK - BS 7176 CLASS MEDIUM HAZARD

USA - Cal TB 117 NFPA 701 - NFPA 260

UNI EN 1021/1-2

IMO Part 8 Upholstery

# ROCCIA / CAT. S

## UK

### Composition

100 % Polyester Trevira CS

### Weight

gr./m<sup>2</sup> 350 ± 5 %

### Width

cm 140

### Abrasion test - Martindale

UNI EN ISO 12947-2 ± 10 % 70.000 turns

### Lightfastness

Xenotest UNI EN ISO 105-B02 6

### Cleaning

Do not brush. Only use a vacuum-cleaner regularly.  
Professionally dry clean or wipe clean with a damp cloth.

### Colour differences

Slight differences between colour batches have to be considered normal.

### Fire reaction test

Italy - Class 1

France - Class M1

Germany - Class B1 DIN 4102

UK - BS 5852 CRIB 5

UK - BS 7176 CLASS MEDIUM HAZARD

USA - Cal TB 117 NFPA 701 - NFPA 260

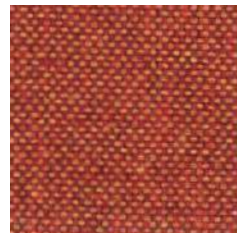
UNI EN 1021/1-2

IMO Part 8 Upholstery

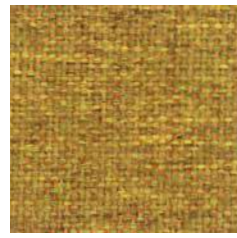
**Diemme.**



# ROCCIA / CAT. S



4501



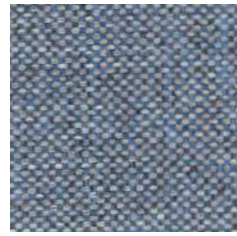
3508



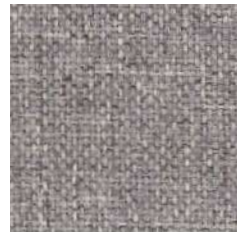
2504



3505



6502



8501



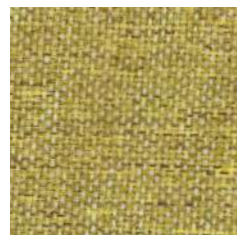
6501



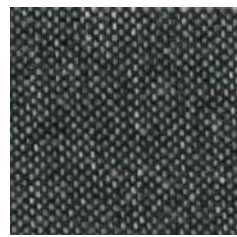
2502



4505



7503



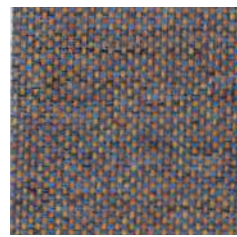
8030



6505



1503



6508



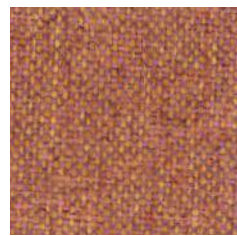
1502



5501



4502



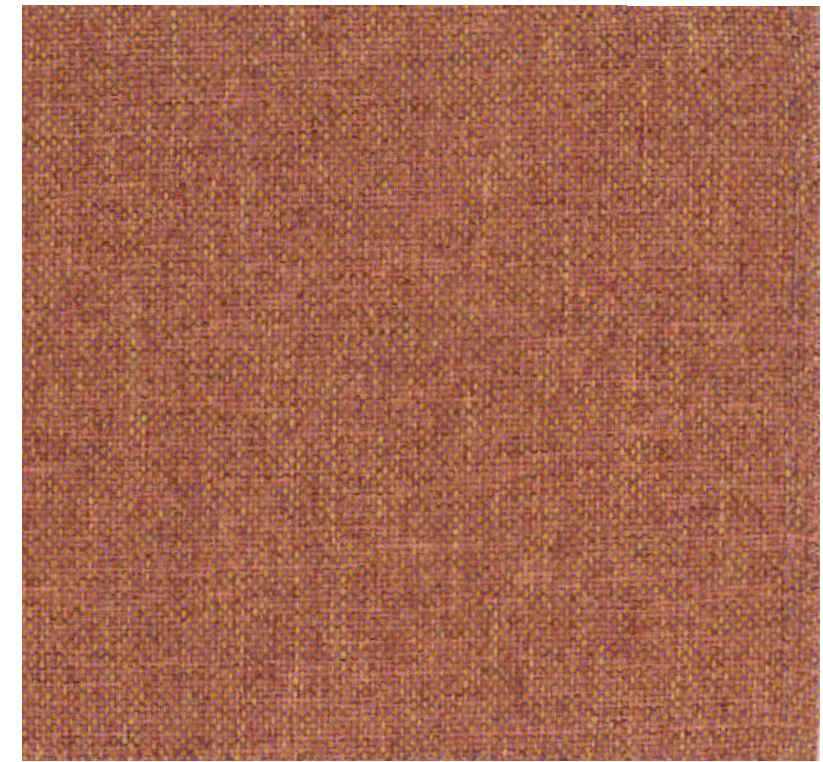
5504



8502



1504



5504

# DAYTONA / CAT. TOP

## IT

### Composizione

51% Poliestere, 38% Acrilico, 11% Poliammide

### Peso

gr./m<sup>2</sup> 395

### Altezza

cm 140

### Abrasione - Test Martindale

UNI EN ISO 12947 200.000 cicli

### Solidità alla luce

UNI EN ISO 105-B02 6

### Pulizia

Per la normale manutenzione del divano si consiglia di passare regolarmente l'aspirapolvere su tutta la superficie.

La tecnologia Aquaclean consente di eliminare piccole macchie come quelle di vino, caffè, cibo e persino la maggior parte dei pennarelli senza dover lavare con sapone o detersivo.

Per approfondimenti scansiona il codice QR.

### Differenze colore

Leggere differenze di colori fra un bagno e l'altro sono da considerarsi normali.

### Test reazione al fuoco

UK - BS EN 1021-1:2014 Parte 1-2

UK - BS 5852 Parte 1:1979

ISO 20743:2013 8.1

UNI 9175:1987 + A1:1994

# DAYTONA / CAT. TOP

## UK

### Composition

51% Polyester, 38% Acrylic, 11% Polyamide

### Weight

gr./m<sup>2</sup> 395

### Width

cm 140

### Abrasion test - Martindale

UNI EN ISO 12947 200.000 turns

### Lightfastness

UNI EN ISO 105-B02 6

### Cleaning

For normal sofa maintenance we recommend that you vacuum the entire surface area regularly.

Aquaclean Technology enables you to get rid of small stains such as wine, coffee, food and even most marker pens without having to wash with soap or detergent.

For more details scan the QR code.

### Colour differences

Slight differences between colour batches have to be considered normal.

### Fire reaction test

UK - BS EN 1021-1:2014 Parte 1-2

UK - BS 5852 Parte 1:1979

ISO 20743:2013 8.1

UNI 9175:1987 + A1:1994

**Diemme.**

aquaclean<sup>®</sup>  
extreme



Leggi il codice QR  
per saperne di più  
sul metodo di  
pulizia aquaclean<sup>®</sup>



STANDARD  
100  
2005AN5120  
A1TEX

www.oeko-tex.com



# DAYTONA / CAT. TOP



76



146



72



131



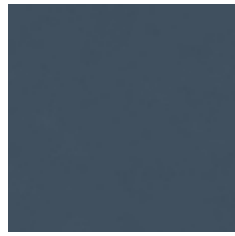
184



102



155



78



158



157



142



81



156



56



145



108



78

# IMPERIA SPICE / CAT. TOP DAYTONA

**Diemme.**

## IMPERIA / CAT. TOP

### IT / EN

**Composizione / Composition**

100% Poliestere / 100 % Polyester

**Peso / Weight**

gr./m<sup>2</sup> 370

**Altezza / Width**

cm 140

**Abrasione - Test Martindale / Abrasion**

UNI EN ISO 12947-2 30.000 cicli / turns

**Solidità alla luce / Lightfastness**

UNI EN ISO 105-B02 4 (scale 1-8)

**Pulizia / Cleaning**

Non spazzolare e usare con regolarità l'aspirapolvere.

Do not brush and use the vacuum-cleaner regularly.

**Differenze colore / Colour differences**

Leggere differenze di colori fra un bagno e l'altro sono da considerarsi normali.

Slight differences between colour batches have to be considered normal.

**Test reazione al fuoco / Fire reaction test**

Italy - UNI 9175 Class 1

UNI EN 1021/1-2

## SPICE / CAT. TOP

### IT / EN

**Composizione / Composition**

100% Poliestere / 100 % Polyester

**Peso / Weight**

gr./m<sup>2</sup> 495

**Altezza / Width**

cm 140

**Abrasione - Test Martindale / Abrasion**

UNI EN ISO 12947-2 40.000 cicli / turns

**Solidità alla luce / Lightfastness**

UNI EN ISO 105-B02 4 (scale 1-8)

**Pulizia / Cleaning**

Non spazzolare e usare con regolarità l'aspirapolvere.

Do not brush and use the vacuum-cleaner regularly.

**Differenze colore / Colour differences**

Leggere differenze di colori fra un bagno e l'altro sono da considerarsi normali.

Slight differences between colour batches have to be considered normal.

**Test reazione al fuoco / Fire reaction test**

Italy - UNI 9175 Class 1

UNI EN 1021/1-2

## DAYTONA / CAT. TOP

### IT / EN

**Composizione / Composition**

51% Poliestere, 38% Acrilico, 11% Poliammide / 51% Polyester, 38% Acrylic, 11% Polyamide

**Peso / Weight**

gr./m<sup>2</sup> 395

**Altezza / Width**

cm 140

**Abrasione - Test Martindale / Abrasion**

UNI EN ISO 12947 200.000 cicli / turns

**Solidità alla luce / Lightfastness**

UNI EN ISO 105-B02 6

**Test reazione al fuoco / Fire reaction test**

UK - BS EN 1021-1:2014 Parte 1-2

UK - BS 5852 Parte 1:1979

ISO 20743:2013 8.1

UNI 9175:1987 + A1:1994



# IMPERIA - SPICE - DAYTONA / CAT. TOP



IMPERIA 12



SPICE 4



IMPERIA 2



SPICE 3



IMPERIA 3



DAYTONA 146



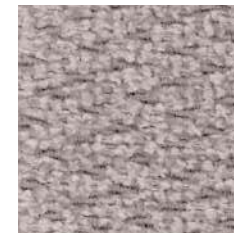
DAYTONA 158



DAYTONA 145



DAYTONA 102



IMPERIA 7



SPICE 2



IMPERIA 9



DAYTONA 72



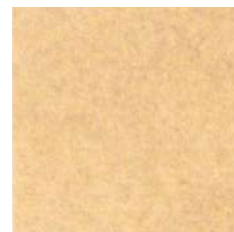
SPICE 6



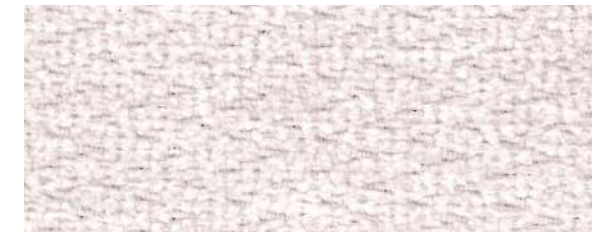
DAYTONA 76



DAYTONA 184



DAYTONA 81



IMPERIA 1

# IKON / CAT. TOP

# IKON / CAT. TOP

## IT

### Composizione

63% Poliuretano, 29% Cotone, 8% Poliestere  
Trattamento ULTRA-FRESH antibatterico e antiacaro.

### Peso

gr./m<sup>2</sup> 480

### Altezza

cm 140

### Abrasion - Test Martindale

UNI EN ISO 5470-2 150.000 cicli

### Solidità alla luce

UNI EN ISO 105-B02 5/6 (scale 1-8)

### Pulizia

Spolverare delicatamente e in caso di macchie lievi passare la superficie con un panno umido o con una soluzione di detergente neutro, risciaquando con acqua senza strizzare. Per le macchie localizzate e più ostinate si consiglia di seguire le seguenti indicazioni: disciogliere tempestivamente la macchia con alcol etilico diluito (liquido incolore) in acqua al 20% tamponare e trattare successivamente con una soluzione di detergente neutro, risciaquare bene.

### Differenze colore

Leggere differenze di colori fra una partita e l'altra sono da considerarsi normali.

### Test reazione al fuoco

Italia - UNI 9175 Classe 1

UK - BS 5852 1- sezione 4 CRIB 5

EN 1021/1-2

USA - Cal TB 117 sezione E

IMO FTP CODE 2010

## EN

### Composition

63% Polyurethane, 29% Cotton, 8% Polyester  
The article contains antibacterial agent, it is anti-allergic and waterproof.

### Weight

gr./m<sup>2</sup> 480

### Width

cm 140

### Abrasion - Test Martindale

UNI EN ISO 12947-2 150.000 turns

### Lightfastness

UNI EN ISO 105-B02 5/6 (scale 1-8)

### Cleaning

Dust gently and in case of light stains pass the surface with a damp cloth or a neutral detergent, rinse with water without squeezing. The following instructions are recommended for small located and more obstinate stains: dissolve immediately with clear ethylic alcohol diluted in water to 20%, dab and then treat with a neutral detergent solution. Rinse abundantly.

### Colour differences

Slight color differences between one lot and another have to be considered within commercial tolerance.

### Fire reaction test

Italy - UNI 9175 Class 1

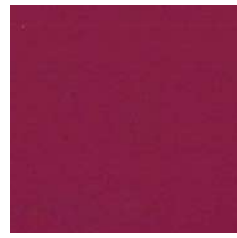
UK - BS 5852 1- sezione 4 CRIB 5

EN 1021/1-2

USA - Cal TB 117 sezione E

IMO FTP CODE 2010

# IKON / CAT. TOP



1330



230



1830



930



330



2030



530



1430



1630



2230



1730



1130



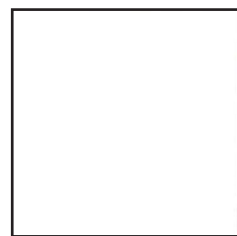
430



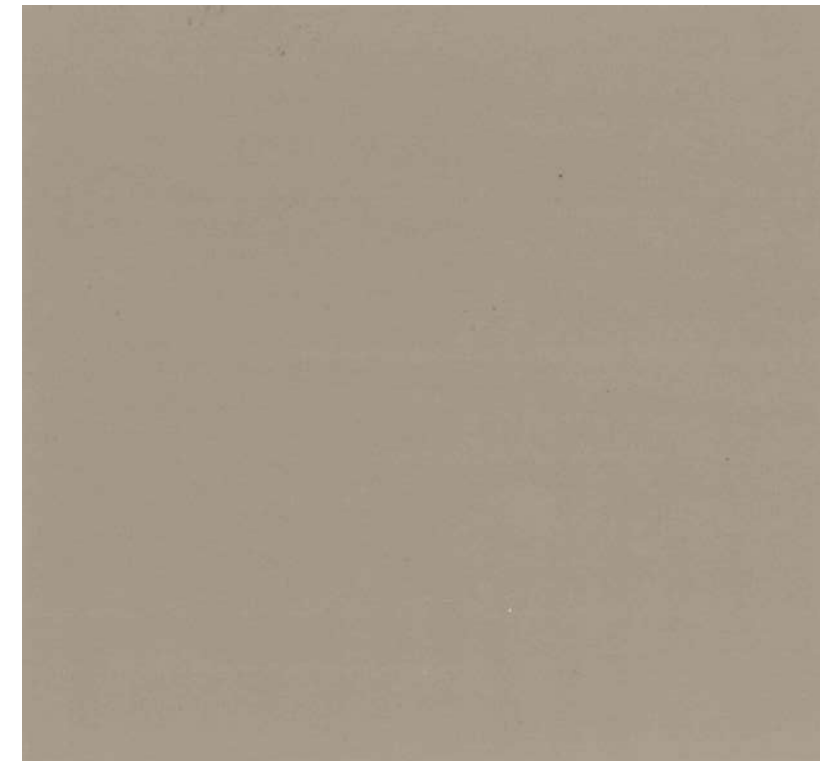
1030



1230



130



330

## BLAZER / CAT. EXTRA

IT / EN

### Composizione / Composition

100% Lana vergine / 100 % Virgin Wool

### Peso / Weight

gr./m<sup>2</sup> 460

### Altezza / Width

cm 140

### Abrasione - Test Martindale / Abrasion

UNI EN ISO 12947-2 50.000 cicli / turns

### Solidità alla luce / Lightfastness

UNI EN ISO 105-B02 5 (scale 1-8)

### Pulizia / Cleaning

Non spazzolare e usare con regolarità l'aspirapolvere.

Do not brush and use the vacuum-cleaner regularly.

### Differenze colore / Colour differences

Leggere differenze di colori fra un bagno e l'altro sono da considerarsi normali.

Slight differences between colour batches have to be considered normal.

### Test reazione al fuoco / Fire reaction test

Italy - UNI 9175 Class 1

UK - BS 7176 LOW HAZARD

UK - BS 476 PART 7 CLASS 1

EN 1021/1-2

EN 13501-1 ADHERED CLASS D

## BLAZER - HESTAN / CAT. EXTRA

## HESTAN / CAT. EXTRA

IT / EN

### Composizione / Composition

100% Poliestere ignifugo / 100 % Flame retardant

polyester

### Peso / Weight

gr./m<sup>1</sup> 570

### Altezza / Width

cm 140

### Abrasione - Test Martindale / Abrasion

UNI EN ISO 12947-2 60.000 cicli / turns

### Solidità alla luce / Lightfastness

UNI EN ISO 105-B02 6 (scale 1-8)

### Pulizia / Cleaning

Non spazzolare e usare con regolarità l'aspirapolvere.

Do not brush and use the vacuum-cleaner regularly.

### Differenze colore / Colour differences

Leggere differenze di colori fra un bagno e l'altro sono da considerarsi normali.

Slight differences between colour batches have to be considered normal.

### Test reazione al fuoco / Fire reaction test

Italy - UNI 9175 Class 1

France - NF P 92/503-507, M1

UK - BS 5852 CRIB 5

Germany - DIN 4102, B1

EN 1021/1-2

USA - Cal TB 117

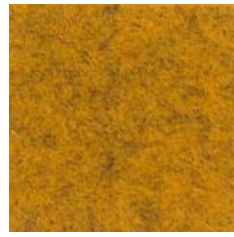
# BLAZER - HESTAN / CAT. EXTRA



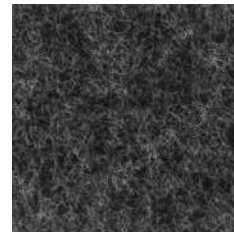
BLAZER CUZ08



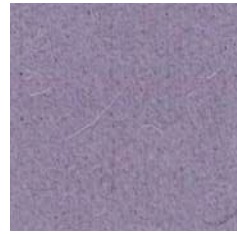
BLAZER CUZ2U



BLAZER CUZ82



BLAZER CUZ30



BLAZER CUZ1T



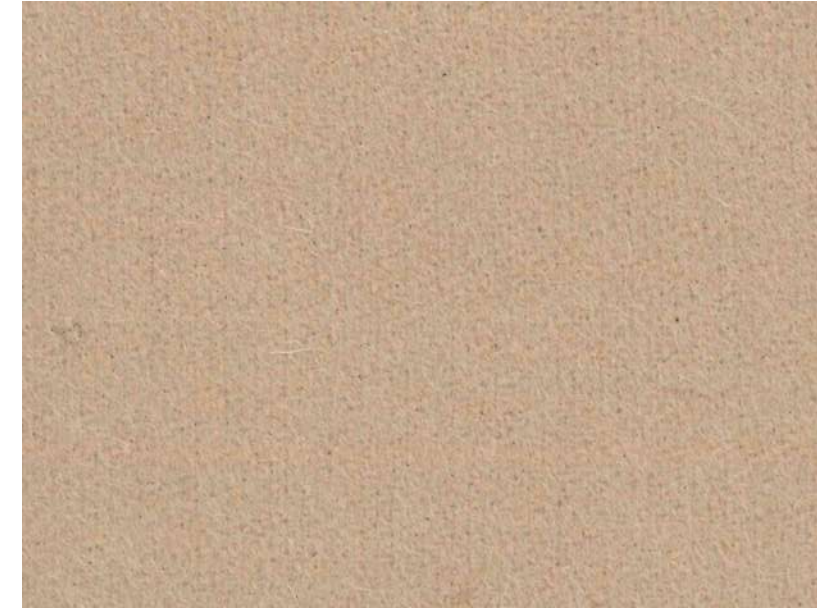
BLAZER CUZ33



BLAZER CUZ1M



BLAZER CUZ1V



BLAZER CUZ47



BLAZER CUZ3A



BLAZER CUZ2R



BLAZER CUZ39



BLAZER CUZ47



BLAZER CUZ28



BLAZER CUZ3E



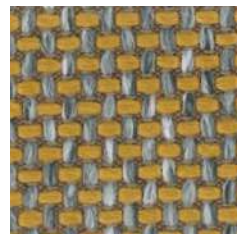
BLAZER CUZ86



BLAZER CUZ53



HESTAN 7035.21



HESTAN 7035.20



HESTAN 7035.10



HESTAN 7035.21



HESTAN 7035.29



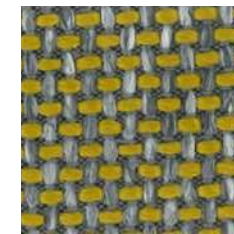
HESTAN 7035.26



HESTAN 7035.28



HESTAN 7035.03



HESTAN 7035.17

# GORGEOUS / CAT. EXTRA

## IT

---

### Composizione

100 % PES FR - Trevira CS

### Peso

gr./m<sup>2</sup> 450

### Altezza

cm 140

### Abrasion - Test Martindale

UNI EN ISO 12947-2 100.000 cicli

### Solidità alla luce

Xenotest UNI EN ISO 105-B02 5 ± 1

### Pulizia

Aspirare regolarmente. Pulizia a secco professionale, in alternativa pulire con un panno umido.

### Differenze colore

Leggere differenze di colori fra un bagno e l'altro sono da considerarsi normali.

### Test reazione al fuoco

Italia - UNI 8456-9174 - UNI 9175 Classe 1

Francia - Classe M1

Germania - Classe B1 DIN 4102

UK - BS 5852 CRIB 5

UNI EN 1021/1-2

IMO FTP CODE 2010

# GORGEOUS / CAT. EXTRA

## UK

---

### Composition

100 % PES FR - Trevira CS

### Weight

gr./m<sup>2</sup> 450

### Width

cm 140

### Abrasion test - Martindale

UNI EN ISO 12947/2 100.000 turns

### Lightfastness

Xenotest UNI EN ISO 105-B02 5 ± 1

### Cleaning

Vacuum regulary. Professionally dry clean or wipe clean with a damp cloth.

### Colour differences

Slight differences between colour batches have to be considered normal.

### Fire reaction test

Italy - UNI 8456-9174 - UNI 9175 Class 1

France - Class M1

Germany - Class B1 DIN 4102

UK - BS 5852 CRIB 5

UNI EN 1021/1-2

IMO FTP CODE 2010

# GORGEOUS / CAT. EXTRA



2142



2103



2140



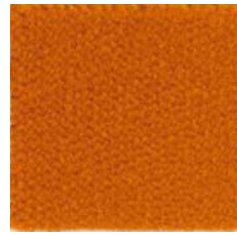
2158



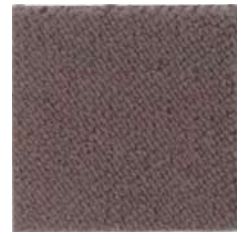
2109



2102



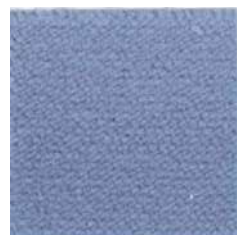
2111



2151



2156



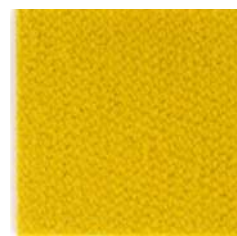
2130



2147



2144



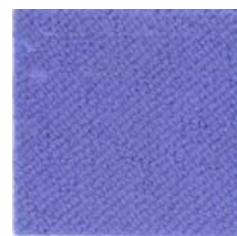
2106



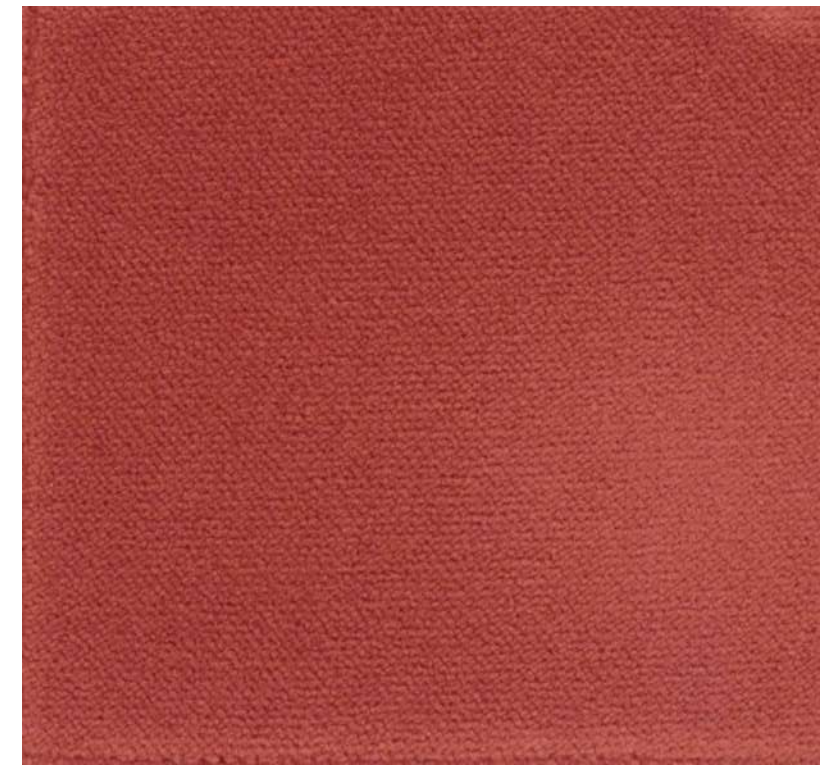
2152



2113



2129



2113

# MOORE AUCKLAND / CAT. EXTRA FOSTER

## MOORE / CAT. EXTRA

### IT / EN

#### Composizione / Composition

100% Poliestere Riciclato FR / 100 % Recycled Polyester FR

#### Peso / Weight

gr./m<sup>1</sup> 835

#### Altezza / Width

cm 141

#### Abrasione - Test Martindale / Abrasion

UNI EN ISO 12947-2 70.000 cicli / turns

#### Solidità alla luce / Lightfastness

UNI EN ISO 105-B02 6 (scale 1-8)

#### Pulizia / Cleaning

Non spazzolare e usare con regolarità l'aspirapolvere.

Do not brush and use the vacuum-cleaner regularly.

#### Differenze colore / Colour differences

Leggere differenze di colori fra un bagno e l'altro sono da considerarsi normali.

Slight differences between colour batches have to be considered normal.

#### Test reazione al fuoco / Fire reaction test

Italy - UNI 9175 Class 1

France - Class 1

Germany - Class B1 DIN 4102

UK - BS 5852 CRIB 5

UNI EN 1021/1-2

USA - Cal TB 117

IMO 2010 FTP part 8



## AUCKLAND / CAT. EXTRA

### IT / EN

#### Composizione / Composition

76% Poliestere Riciclato FR, 24% Poliestere FR / 76% Recycled polyester FR, 24% Polyester FR

#### Peso / Weight

gr./m<sup>1</sup> 704

#### Altezza / Width

cm 141

#### Abrasione - Test Martindale / Abrasion

UNI EN ISO 12947-2 60.000 cicli / turns

#### Solidità alla luce / Lightfastness

UNI EN ISO 105-B02 6 (scale 1-8)

#### Pulizia / Cleaning

Non spazzolare e usare con regolarità l'aspirapolvere.

Do not brush and use the vacuum-cleaner regularly.

#### Differenze colore / Colour differences

Leggere differenze di colori fra un bagno e l'altro sono da considerarsi normali.

Slight differences between colour batches have to be considered normal.

#### Test reazione al fuoco / Fire reaction test

Italy - UNI 9175 Class 1

France - Class1

Germany - Class B1 DIN 4102

UK - BS 5852 CRIB 5

UNI EN 1021/1-2

USA - Cal TB 117

IMO 2010 FTP part 8



## FOSTER / CAT. EXTRA

### IT / EN

#### Composizione / Composition

97% Poliestere Riciclato FR, 3% Poliestere FR / 97% Recycled Polyester FR, 3% Polyester FR

#### Peso / Weight

gr./m<sup>1</sup> 749

#### Altezza / Width

cm 141

#### Abrasione - Test Martindale / Abrasion

UNI EN ISO 12947-2 60.000 cicli / turns

#### Solidità alla luce / Lightfastness

UNI EN ISO 105-B02 6 (scale 1-8)

#### Pulizia / Cleaning

Non spazzolare e usare con regolarità l'aspirapolvere.

Do not brush and use the vacuum-cleaner regularly.

#### Differenze colore / Colour differences

Leggere differenze di colori fra un bagno e l'altro sono da considerarsi normali.

Slight differences between colour batches have to be considered normal.

#### Test reazione al fuoco / Fire reaction test

Italy - UNI 9175 Class 1

France - Class 1

Germany - Class B1 DIN 4102

UK - BS 5852 CRIB 5

UNI EN 1021/1-2

USA - Cal TB 117

IMO 2010 FTP part 8

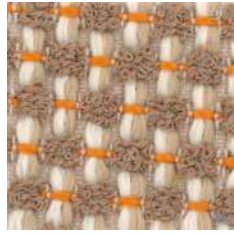




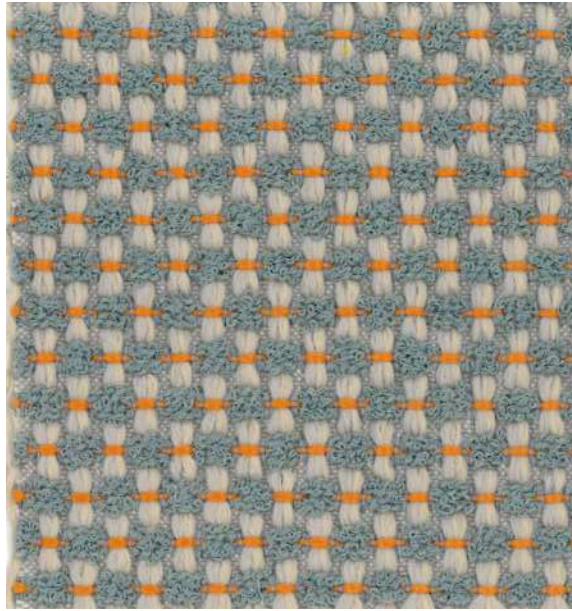
# MOORE - AUCKLAND - FOSTER / CAT. EXTRA



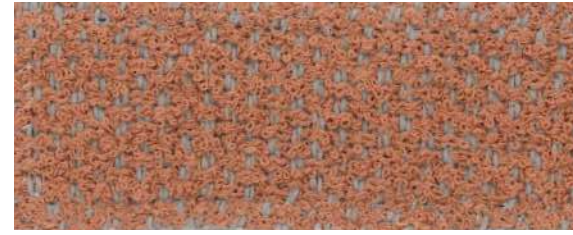
FOSTER 7072.03



MOORE 7075.07



MOORE 7075.08



FOSTER 7072.07



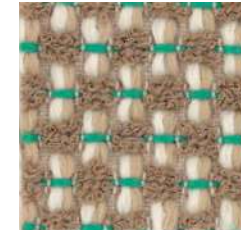
MOORE 7075.12



FOSTER 7072.02



FOSTER 7072.04



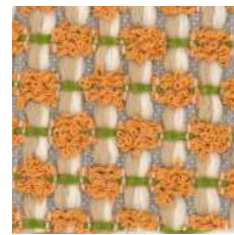
MOORE 7075.11



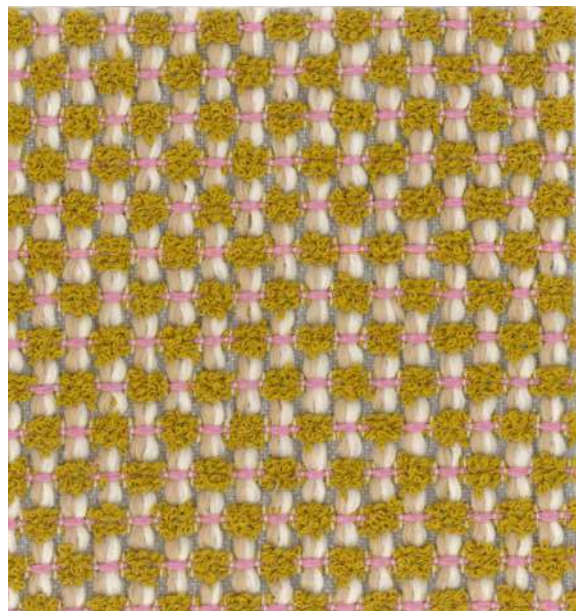
FOSTER 7072.17



FOSTER 7072.05



MOORE 7075.04



MOORE 7075.03



AUCKLAND 7071.14



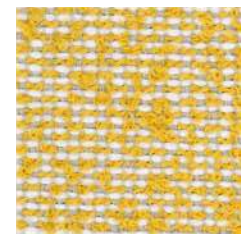
AUCKLAND 7071.19



FOSTER 7072.19



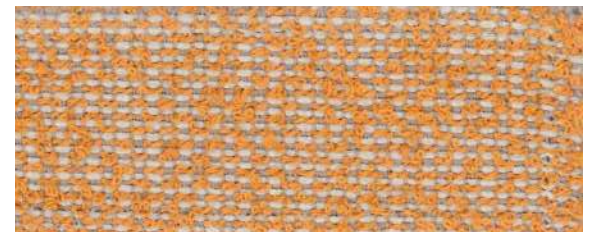
MOORE 7075.05



AUCKLAND 7071.16



FOSTER 7072.01



AUCKLAND 7071.17

# POLO / CAT. FIESTA

## IT

### Composizione

Pelle bovina

### Spessore

0,9 - 1,0 mm

### Caratteristiche

Pelle bovina di provenienza Europea, conciata al cromo tintura passante in botte e fiore leggermente smerigliato. Tutte le lavorazioni sono effettuate con la massima attenzione alla qualità del prodotto e al rispetto dell'ambiente mediante utilizzo di prodotti a norma CEE. Le eventuali piccole imperfezioni, cicatrici ed irregolarità di stampa non sono da considerarsi difetti ma pregi che determinano la garanzia della vera pelle.

### Differenza colore

I prodotti chimici necessari alla produzione della pelle, utilizzati per la concia, la tintura e la rifinizione dei grezzi, non contengono sostanze nocive alla salute ed all'ambiente. Per motivi tecnici non è possibile garantire la stessa tonalità del colore tra una partita e l'altra.

### Pulizia e manutenzione

Per la normale pulizia spolverare periodicamente con un panno pulito, morbido e asciutto. Eventuali macchie possono essere rimosse usando un panno pulito, morbido e asciutto. Evitare di strofinare la superficie da trattare, ma tamponare, dall'esterno verso l'interno della macchia. Non asciugare la pelle alla luce del sole o con l'asciugacapelli. Non utilizzare mai sostanze detergenti non consigliate in quanto possono danneggiare il rivestimento in pelle causando crepe o scolorimento. Per mantenere vivo il colore del rivestimento, evitare l'esposizione del manufatto in pelle alla luce diretta del sole.

### Test reazione al fuoco

British Standard BS 5852 Part 1 (1979)

IMO FTP:Part 8-Resolution A.652 (16)

TB 117-A11@2013 Cigarette Test (California)

# POLO / CAT. FIESTA

## EN

### Composition

Bovine leather

### Thickness

0,9 - 1,0 mm

### Characteristics

First choice corrected quality European fine bovine leather, chromium tanned in barrel and grain surface lightly sanded. All our working methods are carried out respecting the environment and meet CEE standard duties.

Flaws and irregularities are not to be considered as defects, but qualities that guarantee true leather.

### Colour differences

The chemicals needed for the production of leather, used for the tanning, the dyeing and the finishing of the raw hides, do not contain substances which can be harmful for health or the environment. Due to technical reasons it is not possible to guarantee the same tonality of colour from one batch to another.

### Cleaning and care

For normal cleaning just dust the leather with a clean, soft dry cloth. Any stains can be removed using a damp cloth and mild white detergent. Do not rub the surface but dab it from the outside towards the inside of the stain. Do not dry the leather in the sunlight or with a hair dryer. Do not use detergents that are not specific for leather, as they can damage the surface causing it to crack or fade. To keep the colours bright, do not expose the leather to direct sunlight.

### Fire reaction test

British Standard BS 5852 Part 1 (1979)

IMO FTP:Part 8-Resolution A.652 (16)

TB 117-A11@2013 Cigarette Test (California)

# POLO / CAT. FIESTA



837



824



813



843



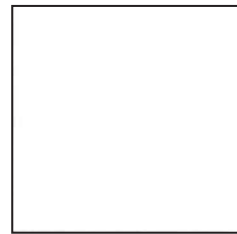
833



933



878



810



822



827



844



881



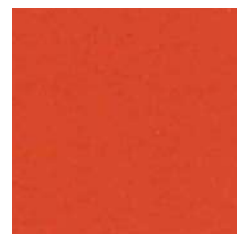
847



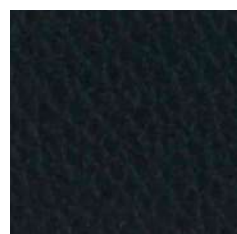
818



859



839



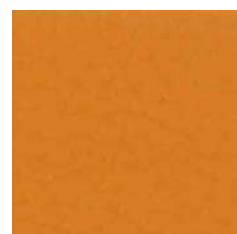
860



853



861



838



824

# NUVOLA / CAT. NUVOLA

## NUVOLA / CAT. NUVOLA

### IT / EN

#### Composizione / Composition

Pelle bovina

#### Spessore / Thickness

1,1 - 1,2 mm

#### Caratteristiche / Characteristics

La qualità della pelle Nuvola, deriva da una migliore scelta dei grezzi di origine Europea e da una maggiore attenzione in tutte le fasi della lavorazione. I prodotti usati per la concia, per la tintura, e per il finissaggio rispettano pienamente le normative CEE e non contengono sostanze nocive per la salute. Le eventuali piccole imperfezioni, cicatrici ed irregolarità di stampa non sono da considerarsi difetti ma pregi che determinano la garanzia della vera pelle.

The quality of Nuvola leather is due to a better choice of bovines coming from Europe and to a greater attention during all the working process. The products used for tanning, dyeing and finishing are in conformity with CEE rules and they are not toxic for human health. Flaws and irregularities are not to be considered as defects, but qualities that guarantee true leather.

#### Test reazione al fuoco / Fire reaction test

British Standard UNI EN ISO 1021:2014

TB 117-A11@20132013 Cigarette Test (California)

IMO FTP:Part 8-Resolution A.652 (16)

## MONTANA / CAT. NUVOLA

### IT / EN

#### Composizione / Composition

Pelle bovina

#### Spessore / Thickness

0,9 - 1,0 mm

#### Caratteristiche / Characteristics

La qualità della pelle Montana, deriva da una migliore scelta dei grezzi di origine Europea e da una maggiore attenzione in tutte le fasi della lavorazione. Una pelle pieno fiore tinta all'anilina passante in botte, Montana viene sottoposta ad un'asciugatura sottovuoto che ne esalta appieno le caratteristiche originali. Montana presenta una mano eccezionalmente setosa, data da una rifinitura ad effetto cerato.

The quality of Nuvola leather is due to a better choice of bovines coming from Europe and to a greater attention during all the working process. Montana is an aniline drum-dyed, full-grain leather that undergoes a gentle vacuum drying process, exalting all the hide's distinctive markings. Montana exhibits an exceptionally silky feel, given by a mild wax finishing.

#### Test reazione al fuoco / Fire reaction test

British Standard BS 5852 Part 1 (1979)

TB 117-A11@20132013 Cigarette Test (California)

IMO FTP:Part 8-Resolution A.652 (16)

#### Differenza colore / Colour differences

I prodotti chimici necessari alla produzione della pelle, utilizzati per la concia, la tintura e la rifinitura dei grezzi, non contengono sostanze nocive alla salute ed all'ambiente. Per motivi tecnici non è possibile garantire la stessa tonalità del colore tra una partita e l'altra.

The chemicals needed for the production of leather, used for the tanning, the dyeing and the finishing of the raw hides, do not contain substances which can be harmful for health or the environment. Due to technical reasons it is not possible to guarantee the same tonality of colour from one bath to another.

#### Pulizia e manutenzione / Cleaning and care

Per la normale pulizia spolverare periodicamente con un panno pulito, morbido e asciutto. Eventuali macchie possono essere rimosse usando un panno pulito, morbido e asciutto. Evitare di strofinare la superficie da trattare, ma tamponare, dall'esterno verso l'interno della macchia. Non asciugare la pelle alla luce del sole o con l'asciugacapelli. Non utilizzare mai sostanze detergenti non consigliate in quanto possono danneggiare il rivestimento in pelle causando crepe o scolorimento. Per mantenere vivo il colore del rivestimento, evitare l'esposizione del manufatto in pelle alla luce diretta del sole.

For normal cleaning just dust the leather with a clean, soft dry cloth. Any stains can be removed using a damp cloth and mild white detergent. Do not rub the surface but dab it from the outside towards the inside of the stain. Do not dry the leather in the sunlight or with a hair dryer. Do not use detergents that are not specific for leather, as they can damage the surface causing it to crack or fade. To keep the colours bright, do not expose the leather to direct sunlight.

**NUVOLA** / CAT. NUVOLA



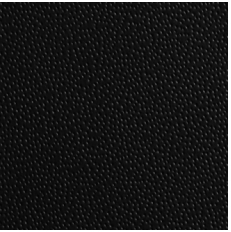
500



508



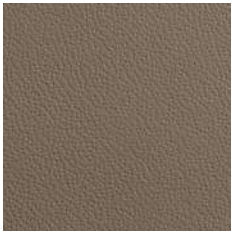
522



569



N98



N47



533



501



513



510



526

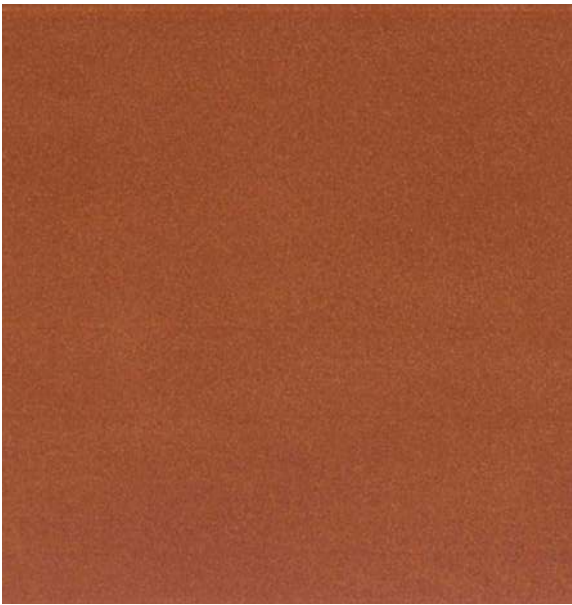


553



553

**MONTANA** / CAT. NUVOLA



\*MONTANA 1301 CUOIO

**\*Pelle Montana 1301 Cuio**  
Pelle **Montana** disponibile solo per articolo **Musa**. Per altri articoli richiedere quotazione.

# RETI

**Diemme.**

## RETE R01

IT / EN

### Composizione / Composition

70% PVC, 30% Poliestere / 70% PVC, 30% Polyester

### Peso / Weight

gr./m<sup>1</sup> 560

### Abrasione - Test Martindale / Abrasion

UNI EN ISO 12947-2 100.000 cicli / turns

### Solidità alla luce / Lightfastness

UNI EN ISO 105-B02 8 (scala blu / blu scale)

Tolleranza da 5 a 8 / Tolerance from 5 to 8

### Resistenza alla fatica / Fatigue strength

EN 1728:2000 EN 15373:2007 livello 3° severo / 3°

hard level 200.000 cicli / turns / 1.000 N

### Pulizia / Cleaning

Usare con regolarità l'aspirapolvere. Lavare con acqua e sapone neutro.

Use the vacuum-cleaner regularly. Wash with water and neutral soap.

### Test reazione al fuoco / Fire reaction test

\* Italy - UNI 9174 Class 1

\* Omologazione ministeriale al fuoco in classe 1 con RETE R01 disponibile sui prodotti (Cfr listino).

## RETE R02

IT / EN

### Composizione / Composition

100% Poliestere / 100% Polyester

### Peso / Weight

gr./m<sup>2</sup> 260

### Abrasione - Test Martindale / Abrasion

UNI EN ISO 12947-2 70.000 cicli / turns

### Solidità alla luce / Lightfastness

UNI EN ISO 105-B02 6 (scala blu / blu scale)

Tolleranza da 5 a 8 / Tolerance from 5 to 8

### Solidità allo sfregamento / Fastness to rubbing

EN ISO 105-X12 4/5 (scala dei grigi)

Tolleranza da 4 a 5

### Pulizia / Cleaning

Lavare con acqua e sapone neutro.

Wash with water and neutral soap.

### Test reazione al fuoco / Fire reaction test

Italy - UNI 9174 Class 1

France - Class M1

Germany - Class B1 DIN 4102

USA - Cal TB 117

EN 1021/1-2

UK - BS 5852 CRIB 5

UK - BS 7176 MEDIUM HAZARD



## RETE R03

IT / EN

### Composizione / Composition

70% Nylon, 30% Poliestere / 70% Nylon, 30% Polyester

### Peso / Weight

gr./m<sup>2</sup> 420

### Abrasione - Test Martindale / Abrasion

UNI EN ISO 12947-2 100.000 cicli / turns

### Solidità alla luce / Lightfastness

Xenotest - Lampada ad arco scala di grigi 20AFU - 4.5

Xenotest - Arc Lamp Gray scale 20AFU - 4.5

### Solidità allo sfregamento / Fastness to rubbing

EN ISO 105-X12 4/5 (scala dei grigi)

Tolleranza da 4 a 5

### Pulizia / Cleaning

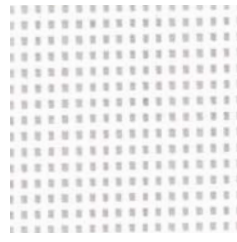
Lavare con acqua e sapone neutro.

Wash with water and neutral soap.

### Test reazione al fuoco / Fire reaction test

USA - TB 117-2013

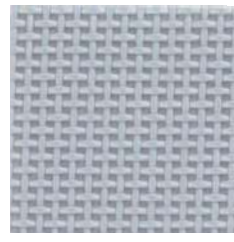
# RETE R01



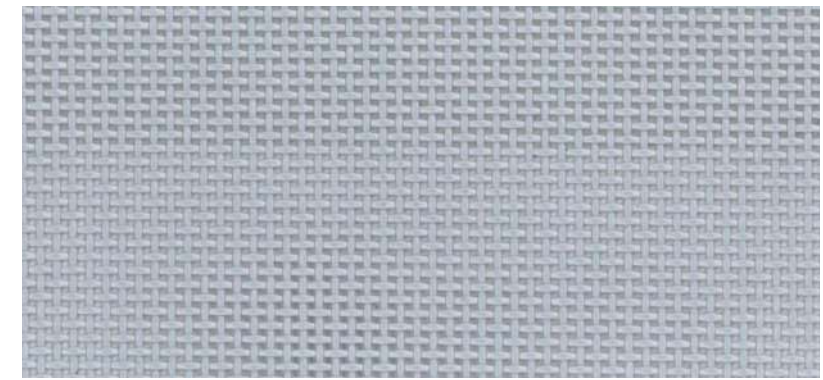
FB0538



FN0538



FG0538

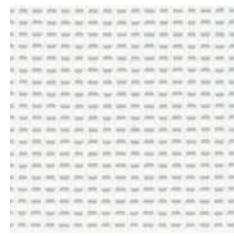


FG0538

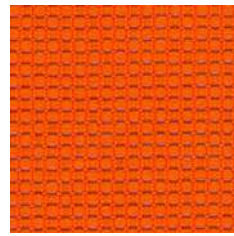
# RETE R02



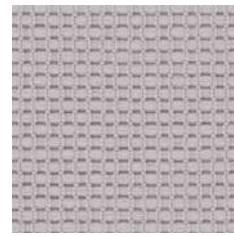
1008



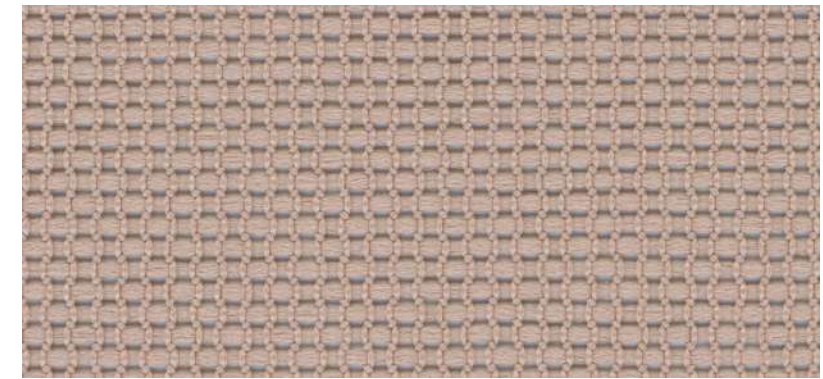
0001



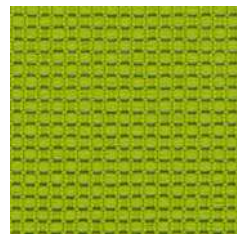
3032



8027



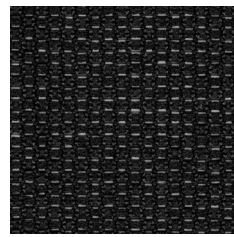
1008



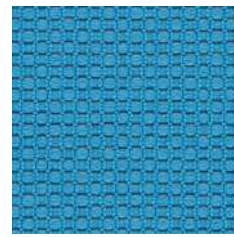
7011



8006

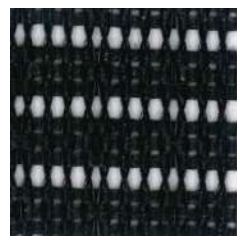


8033

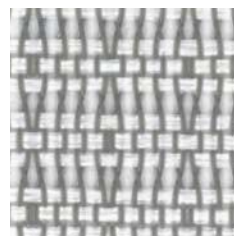


6031

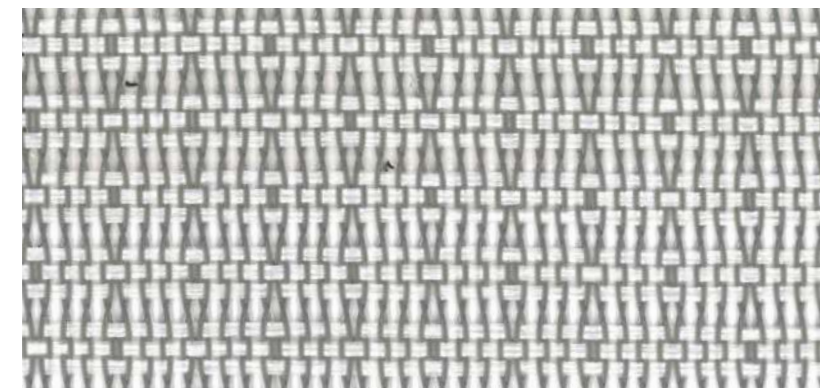
# RETE R03



NK-00

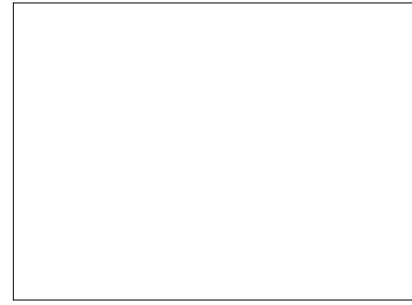


NK-10



NK-10

## **POLIPROPILENE** / Polypropylene



**BIANCO / WHITE**  
RAL 9010



**NERO / BLACK**  
RAL 9011



**ARANCIONE / ORANGE**  
SIMIL RAL 3022



**VERDE / GREEN**  
PANTONE 553U



**AZZURRO / LIGHT BLUE**  
NCS S 3010-B10G



**BEIGE / BEIGE**  
NCS S 3005-Y80R

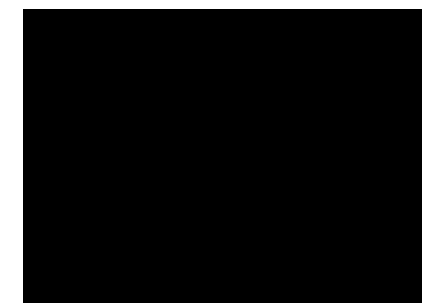


**ROSSO SCURO / DARK  
RED**  
NCS S 3560-Y90R

## **RIVESTIMENTO IN CUOIO** / Saddle leather



**NATURALE / NATURAL**



**NERO / BLACK**

**CLOP**

**Diemme.**



## **POLIURETANO RIGIDO TECH /**

Tech Polyurethane



**BIANCO / WHITE**  
RAL 9016



**ANTRACITE / ANTHRACITE**  
RAL 7024

## **BICOLOR /** Two-color shell



**BIANCO / WHITE**  
RAL 9016  
**Fronte scocca / Inner part**

**BEIGE / BEIGE**  
RAL 1019  
**Retro scocca / Outside part**



**AVORIO / IVORY**  
RAL 1013  
**Fronte scocca / Inner part**

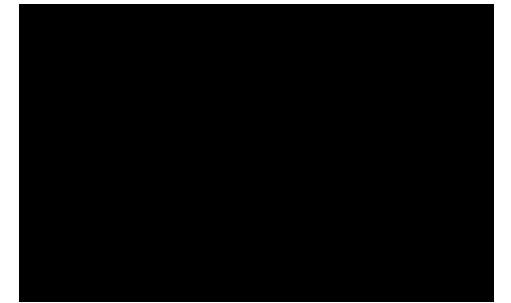
**MOKA / MOKA**  
RAL 8019  
**Retro scocca / Outside part**

**EON**

# POLIPROPILENE / Polypropylene



**BIANCO / WHITE**  
RAL 9003



**NERO / BLACK**  
RAL 9011



**MATTONE / BRICK**  
PANTONE 18-1248 TCX



**VERDE / GREEN**  
SIMIL RAL 6005

**KIRE**



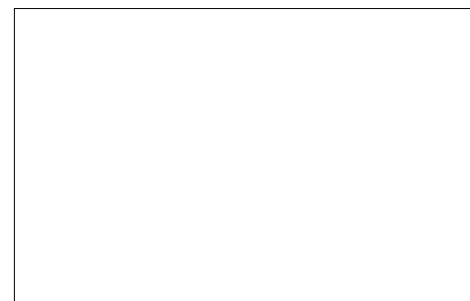
**AZZURRO / LIGHT BLUE**  
NCS S 3010-B10G



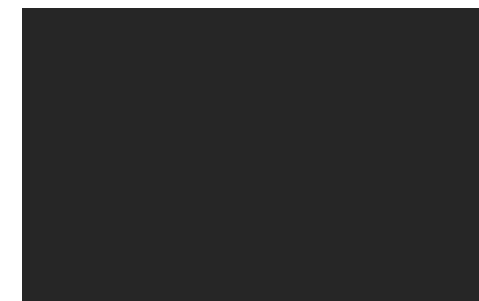
**OCRA / OCHRE**  
PANTONE 7510L

# MARGARITA - MARGARITA TABLE

## MARGARITA - POLIETILENE / Polyethylene



**BIANCO / WHITE**  
RAL 9010



**ANTRACITE / ANTHRACITE**  
SIMIL PANTONE 425 C



**GIALLO / YELLOW**  
SIMIL PANTONE 130 EC



**GRIGIO / GREY**  
SIMIL PANTONE 413 EC

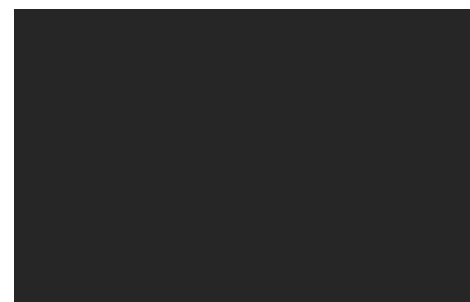


**ROSSO / RED**  
SIMIL PANTONE 201C



**VERDE / GREEN**  
SIMIL PANTONE 583C

## MARGARITA TABLE - POLIETILENE / Polyethylene



**ANTRACITE / ANTHRACITE**  
SIMIL PANTONE 425 C



**BIANCO / WHITE**  
RAL 9010

# POLIPROPILENE / Polypropylene



**ANTRACITE / ANTHRACITE**  
RAL 7024



**BIANCO / WHITE**  
RAL 9003



**BLU / BLUE**  
PANTONE 294C



**GRIGIO / GREY**  
RAL 7040

**NEW BONN**



**NERO / BLACK**  
RAL 9005



**ROSSO / RED**  
PANTONE 201C

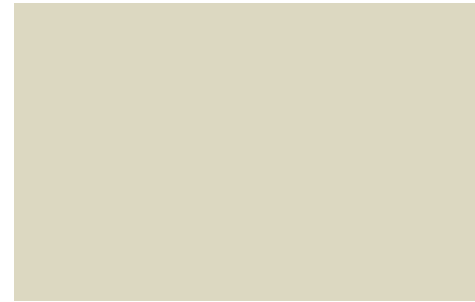
# POLIPROPILENE / Polypropylene



**NERO / BLACK**  
RAL 9011



**BIANCO / WHITE**  
RAL 9003



**SABBIA / SAND**  
PANTONE 401EC



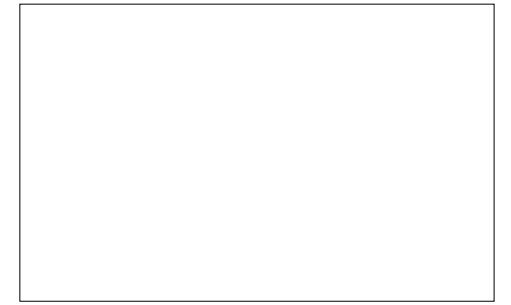
**GRIGIO / GREY**  
RAL 7040

**SLIM**

**POLIPROPILENE** / Polypropylene



**NERO / BLACK**  
RAL 9011



**BIANCO / WHITE**  
RAL 9003

**SUNNY NEW**

rivestimenti  
upholstery  
**2024**