

rivestimenti
upholstery
2025

JET / CAT. F

IT

Composizione

100 % Poliestere - Trevira CS®

Peso

gr./m² 260 ± 5 %

Altezza

cm 140

Abrasione - Test Martindale

UNI EN ISO 12947/2 ± 10 % 65.000 cicli

Solidità alla luce

UNI EN ISO 105-B02 6

Pulizia

Non spazzolare e usare con regolarità l'aspirapolvere.
Pulizia a secco professionale, in alternativa pulire con un panno umido.

Differenze colore

Leggere differenze di colori fra un bagno e l'altro sono da considerarsi normali.

Test reazione al fuoco

Italia - Classe 1M

Francia - Classe M1

Germania - Classe B1 DIN 4102

UK - BS 5852 CRIB 5

USA - California TB 117

UNI EN 1021/1-2

IMO Res. A 652 (16) Part 8 / A 471 (XII) Part 7

JET / CAT. F

UK

Composition

100 % Polyester - Trevira CS®

Weight

gr./m² 260 ± 5 %

Width

cm 140

Abrasion test - Martindale

UNI EN ISO 12947/2 ± 10 % 65.000 turns

Lightfastness

UNI EN ISO 105-B02 6

Cleaning

Do not brush. Only use a vacuum-cleaner regularly.
Professionally dry clean or wipe clean with a damp cloth.

Colour differences

Slight differences between colour batches have to be considered normal.

Fire reaction test

Italy - Class 11M

France - Class M1

Germany - Class B1 DIN 4102

UK - BS 5852 CRIB 5

USA - California TB 117

UNI EN 1021/1-2

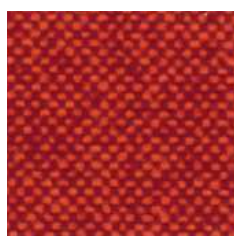
IMO Res. A 652 (16) Part 8 / A 471 (XII) Part 7



JET / CAT. F



4051



9402



4018



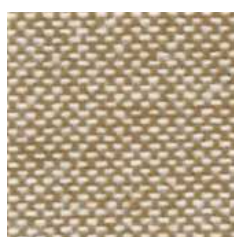
9110



9305



7025



9703



7034



3019



9610



6007



6091



2024



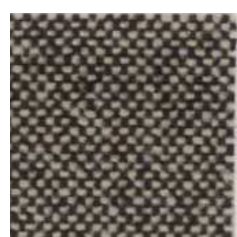
6056



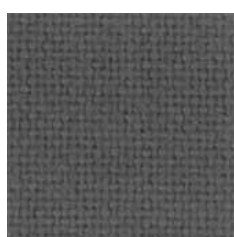
9601



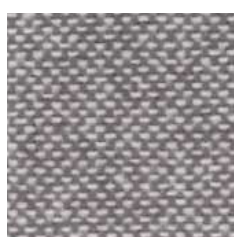
6013



9108



8009



9804



8033



9281



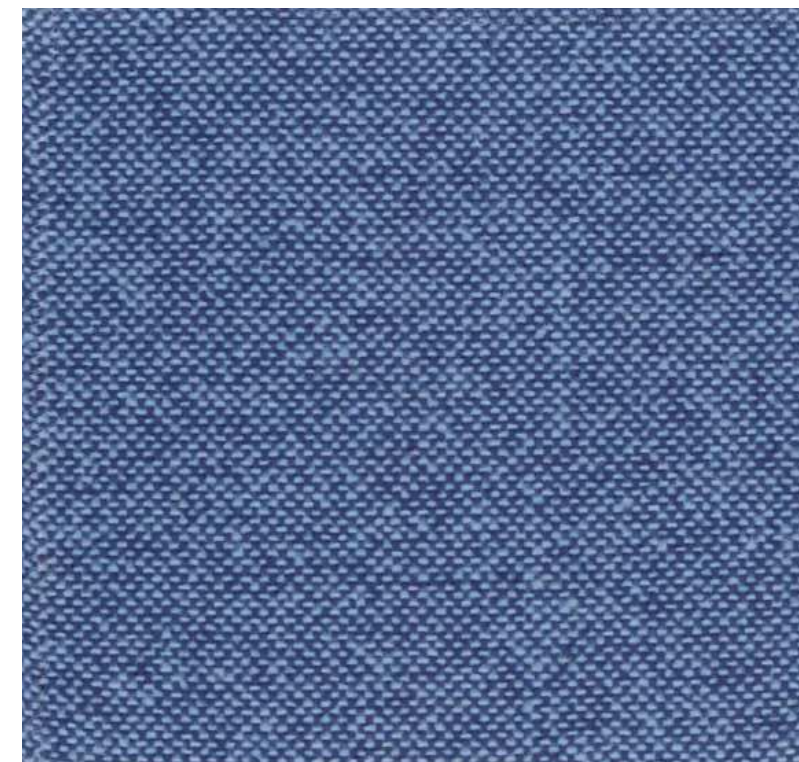
8017



8078



6095



9601

PLANET - SURROUND / CAT. F

Diemme.

PLANET - SURROUND / CAT. F

IT

Composizione

87,5 % PVC, 12,5 % Cotone

L'articolo è trattato con prodotto antibatterico, è anallergico e impermeabile.

Peso

gr./m2 640

Altezza

cm 140

Abrasion - Test Martindale

UNI EN ISO 5470-2 100.000 cicli

Solidità alla luce

UNI EN ISO 105-B02 6/7 (scale 1-8)

Pulizia

Spolverare delicatamente e in caso di macchie lievi passare la superficie con un panno umido o con una soluzione di detergente neutro, risciacquando con acqua senza strizzare. Per le macchie localizzate e più ostinate si consiglia di seguire le seguenti indicazioni: disciogliere tempestivamente la macchia con alcol etilico diluito (liquido incolore) in acqua al 20% tamponare e trattare successivamente con una soluzione di detergente neutro, risciacquare bene.

EN

Composition

87,5 % PVC, 12,5 % Cotton

The article contains antibacterial agent, it is anti-allergic and waterproof.

Weight

gr./m2 640

Width

cm 140

Abrasion - Test Martindale

UNI EN ISO 12947-2 100.000 turns

Lightfastness

UNI EN ISO 105-B02 6/7 (scale 1-8)

Cleaning

Dust gently and in case of light stains pass the surface with a damp cloth or a neutral detergent, rinse with water without squeezing. The following instructions are recommended for small located and more obstinate stains: dissolve immediately with clear ethylic alcohol diluted in water to 20%, dab and then treat with a neutral detergent solution. Rinse abundantly.

I colori chiari non devono essere messi a contatto con tessuti e capi d'abbigliamento trattati con coloranti non fissati, o con scarse solidità di tintura, onde evitare macchie ed aloni di coloranti di cui non possiamo garantire la pulitura.

Differenze colore

Leggere differenze di colori fra una partita e l'altra sono da considerarsi normali.

Test reazione al fuoco

- * Italia - UNI 9175 Classe 1IM
- Francia - NF P 92 503-507 M2
- Germania - DIN 4102 B2
- UK - BS 5852 1-2 CRIB 5
- UNI EN 1021/1-2
- USA - TB 117:2013
- IMO FTP CODE 2010

- * Omologazione ministeriale al fuoco in classe 1 IM con rivestimento PLANET-SURROUND e poliuretano ignifugo disponibile sui prodotti (Cfr listino).

To avoid permanent stains, the lighter colours of the article should not be brought into contact with textiles and clothing coloured with unfixed dyes. We cannot guarantee the ability to remove unknown dyes from light coloured product.

Colour differences

Slight color differences between one lot and another have to be considered within commercial tolerance.

Fire reaction test

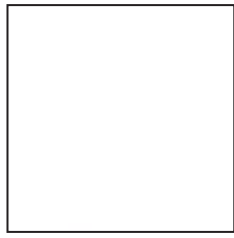
- Italy - UNI 9175 Class 1IM
- France - NF P 92 503-507 M2
- Germany - DIN 4102 B2
- UK - BS 5852 1-2 CRIB 5
- UNI EN 1021/1-2
- USA - TB 117:2013
- IMO FTP CODE 2010



PLANET - SURROUND / CAT. F



125



101



136



110



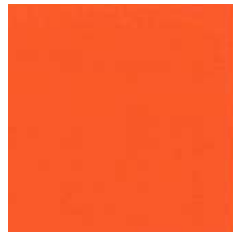
121



126



118



120



109



116



135



129



114



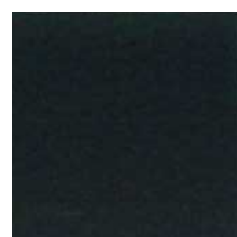
103



123



106



133



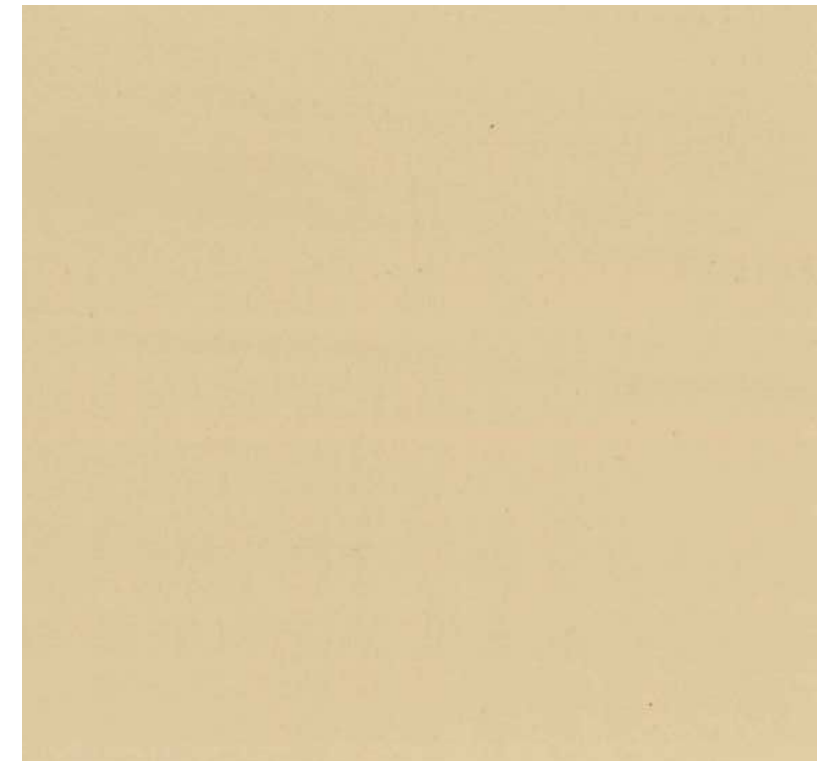
104



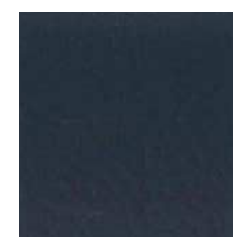
122



132



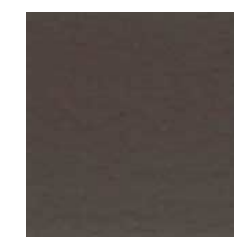
110



131



117



119



111

MIRAGE / CAT. G

IT

Composizione

100 % Poliestere FR - Trevira CS

Peso

gr./m² 330 ± 5 %

Altezza

cm 140

Abrasion - Test Martindale

UNI EN ISO 12947 ± 20 % 100.000 cicli

Solidità alla luce

Xenotest UNI EN ISO 105-B02 6 ± 1

Pulizia

Non spazzolare e usare con regolarità l'aspirapolvere.
Pulizia a secco professionale, in alternativa pulire con un panno umido.

Differenze colore

Leggere differenze di colori fra un bagno e l'altro sono da considerarsi normali.

Test reazione al fuoco

* Italia - Classe 1IM
Francia - Classe M1
Germania - Classe B1 DIN 4102
UK - BS 5852 CRIB
USA - California TB 117-2013
UNI EN 1021/1-2

* Omologazione ministeriale al fuoco in classe 1 IM con rivestimento MIRAGE e poliuretano ignifugo disponibile sui prodotti (Cfr listino).

MIRAGE / CAT. G

UK

Composition

100 % Polyester FR - Trevira CS

Weight

gr./m² 330 ± 5 %

Width

cm 140

Abrasion test - Martindale

UNI EN ISO 12947/2 ± 20 % 100.000 turns

Lightfastness

Xenotest UNI EN ISO 105-B02 6 ± 1

Cleaning

Do not brush. Only use a vacuum-cleaner regularly.
Professionally dry clean or wipe clean with a damp cloth.

Colour differences

Slight differences between colour batches have to be considered normal.

Fire reaction test

Italy - Class 1IM
France - Class M1
Germany - Class B1 DIN 4102
UK - BS 5852 CRIB
USA - California TB 117-2013
UNI EN 1021/1-2

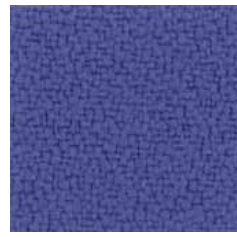
MIRAGE / CAT. G



119



573



263



651



516



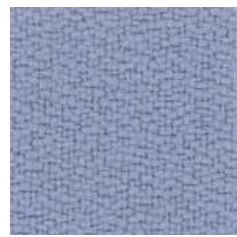
066



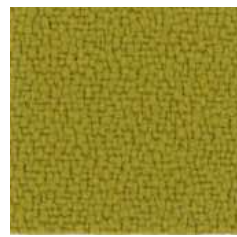
534



463



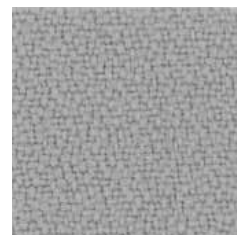
377



426



231



629



533



236



411



120



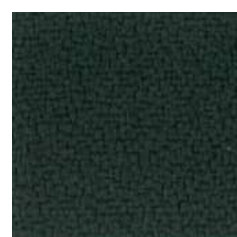
175



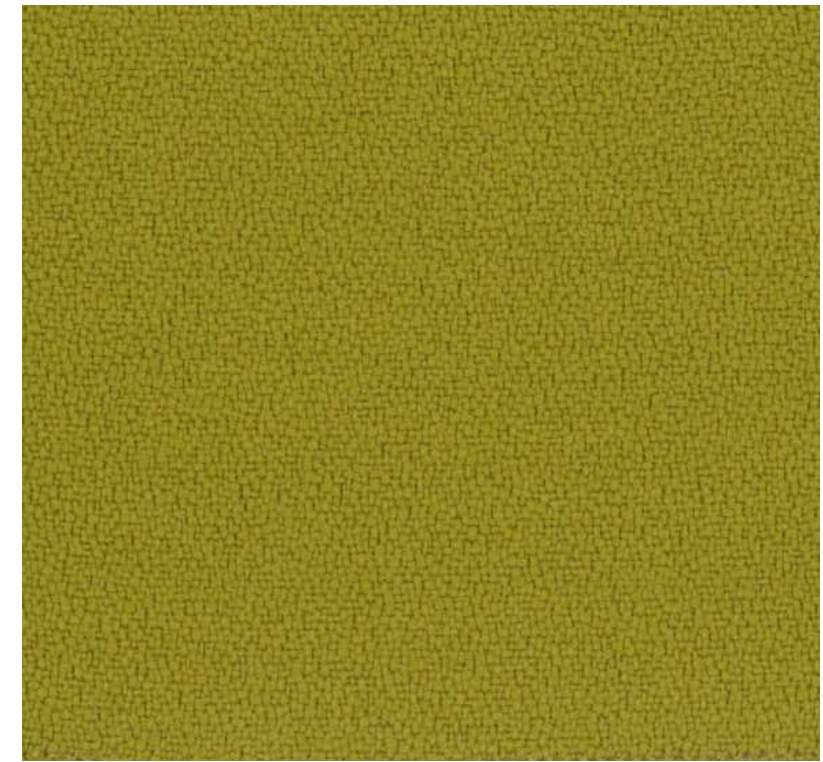
331



053



496



426

ONE / CAT. G

IT

Composizione

100 % Poliestere Riciclato

Peso

gr./m² 350 ± 5 %

Altezza

cm 150

Abrasione - Test Martindale

UNI EN ISO 12947/2 ± 10 % 100.000 cicli

Solidità alla luce

UNI EN ISO 105-B02 6

Pulizia

Non spazzolare e usare con regolarità l'aspirapolvere.

Pulizia a secco professionale, in alternativa pulire con un panno umido.

Differenze colore

Leggere differenze di colori fra un bagno e l'altro sono da considerarsi normali.

Test reazione al fuoco

Italia - Classe 1

UK - BS 5852 CRIB 5

UK - BS 7176 CLASS MEDIUM HAZARD

USA - California TB 117-2013

UNI EN 1021/1-2

ONE / CAT. G

UK

Composition

100 % Recycled Polyester

Weight

gr./m² 350 ± 5 %

Width

cm 150

Abrasion test - Martindale

UNI EN ISO 12947/2 ± 10 % 100.000 turns

Lightfastness

UNI EN ISO 105-B02 6

Cleaning

Do not brush. Only use a vacuum-cleaner regularly.

Professionally dry clean or wipe clean with a damp cloth.

Colour differences

Slight differences between colour batches have to be considered normal.

Fire reaction test

Italy - Class 1

UK - BS 5852 CRIB 5

UK - BS 7176 CLASS MEDIUM HAZARD

USA - California TB 117-2013

UNI EN 1021/1-2

Diemme.



ONE / CAT. G



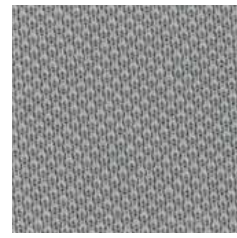
6512



1006



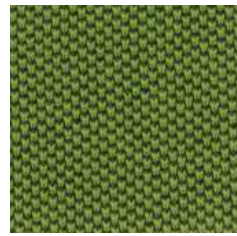
6024



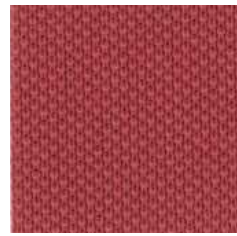
8032



4030



7521



4079



6555



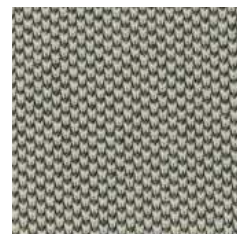
2519



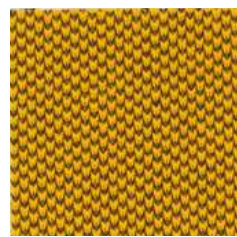
4566



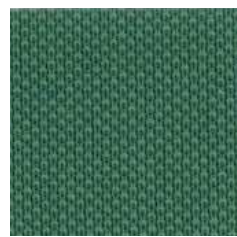
7504



1506



3530



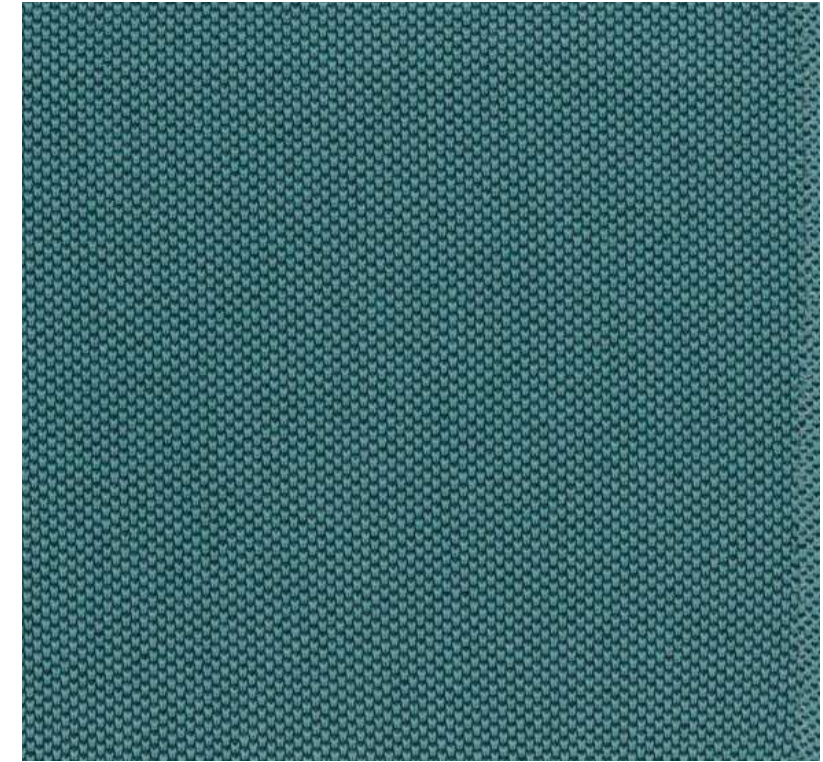
7026



4528



8033



7504

ERA / CAT. S

IT

Composizione

100 % Poliestere

Peso

gr./m² 320 ± 5 %

Altezza

cm 140

Abrasion - Test Martindale

UNI EN ISO 12947-2 100.000 cicli

Solidità alla luce

UNI EN ISO 105-B02 5

Pulizia

Non spazzolare e usare con regolarità l'aspirapolvere.

Pulizia a secco professionale, in alternativa pulire con un panno umido.

Differenze colore

Leggere differenze di colori fra un bagno e l'altro sono da considerarsi normali.

Test reazione al fuoco

BS 7176 LOW HAZARD - MEDIUM HAZARD

BS 5852 IGNITION SOURCE 5 WITH ENVIRO FLAM 5

BS 7176 CLASS MEDIUM HAZARD

UK - BS 7176 CLASS MEDIUM HAZARD

UNI EN 1021-1 (CIGARETTE) - 2 (MATCH)

ERA / CAT. S

UK

Composition

100 % Polyester

Weight

gr./m² 320 ± 5 %

Width

cm 140

Abrasion test - Martindale

UNI EN ISO 12947-2 100.000 turns

Lightfastness

UNI EN ISO 105-B02 5

Cleaning

Do not brush. Only use a vacuum-cleaner regularly.

Professionally dry clean or wipe clean with a damp cloth.

Colour differences

Slight differences between colour batches have to be considered normal.

Fire reaction test

BS 7176 LOW HAZARD - MEDIUM HAZARD

BS 5852 IGNITION SOURCE 5 WITH ENVIRO FLAM 5

BS 7176 CLASS MEDIUM HAZARD

UK - BS 7176 CLASS MEDIUM HAZARD

UNI EN 1021-1 (CIGARETTE) - 2 (MATCH)

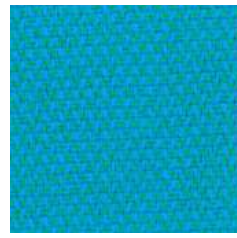
ERA / CAT. S



CSE29



CSE02



CSE10



CSE01



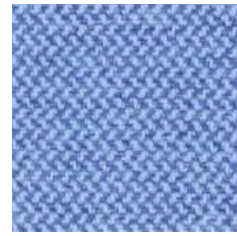
CSE25



CSE16



CSE21



CSE08



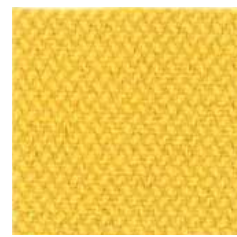
CSE19



CSE33



CSE05



CSE03



CSE20



CSE09



CSE11



CSE15



CSE06



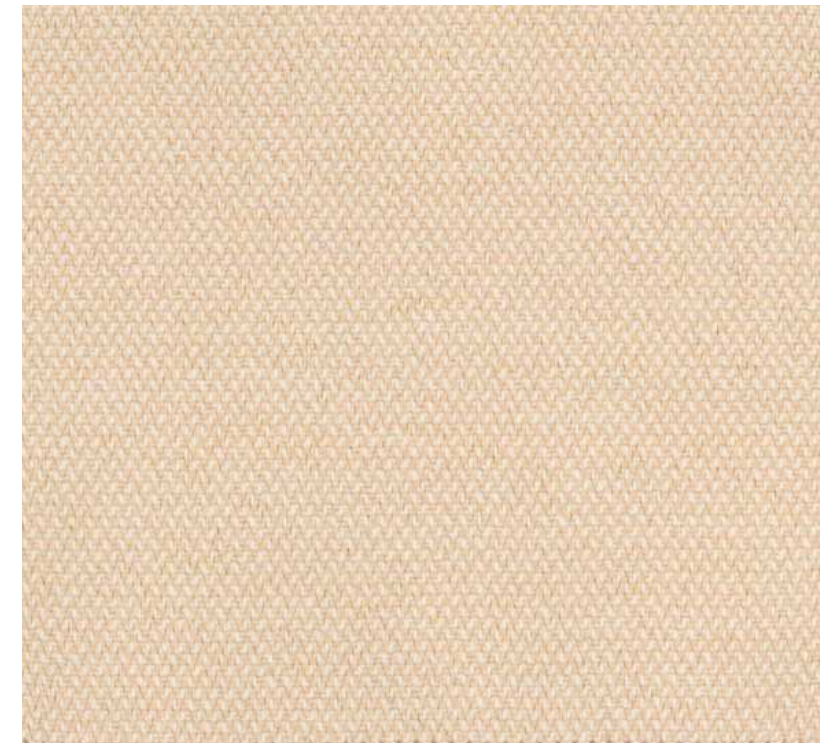
CSE13



CSE14



CSE23



CSE01

ROCCIA / CAT. S

IT

Composizione

100 % Poliestere Trevira CS

Peso

gr./m² 350 ± 5 %

Altezza

cm 140

Abrasion - Test Martindale

UNI EN ISO 12947-2 ± 10 % 70.000 cicli

Solidità alla luce

Xenotest UNI EN ISO 105-B02 6

Pulizia

Non spazzolare e usare con regolarità l'aspirapolvere.
Pulizia a secco professionale, in alternativa pulire con un panno umido.

Differenze colore

Leggere differenze di colori fra un bagno e l'altro sono da considerarsi normali.

Test reazione al fuoco

Italia - Classe 1

Francia - Classe M1

Germania - Classe B1 DIN 4102

UK - BS 5852 CRIB 5

UK - BS 7176 CLASS MEDIUM HAZARD

USA - Cal TB 117 NFPA 701 - NFPA 260

UNI EN 1021/1-2

IMO Part 8 Upholstery

ROCCIA / CAT. S

UK

Composition

100 % Polyester Trevira CS

Weight

gr./m² 350 ± 5 %

Width

cm 140

Abrasion test - Martindale

UNI EN ISO 12947-2 ± 10 % 70.000 turns

Lightfastness

Xenotest UNI EN ISO 105-B02 6

Cleaning

Do not brush. Only use a vacuum-cleaner regularly.
Professionally dry clean or wipe clean with a damp cloth.

Colour differences

Slight differences between colour batches have to be considered normal.

Fire reaction test

Italy - Class 1

France - Class M1

Germany - Class B1 DIN 4102

UK - BS 5852 CRIB 5

UK - BS 7176 CLASS MEDIUM HAZARD

USA - Cal TB 117 NFPA 701 - NFPA 260

UNI EN 1021/1-2

IMO Part 8 Upholstery

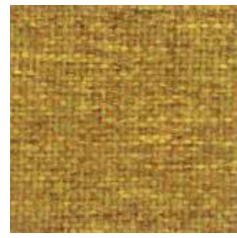
Diemme.



ROCCIA / CAT. S



4501



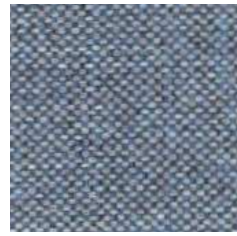
3508



2504



3505



6502



8501



6501



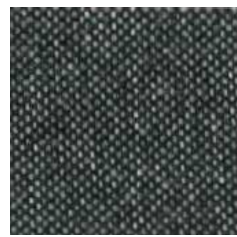
2502



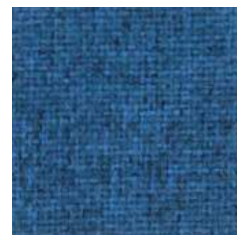
4505



7503



8030



6505



1503



6508



1502



5501



4502



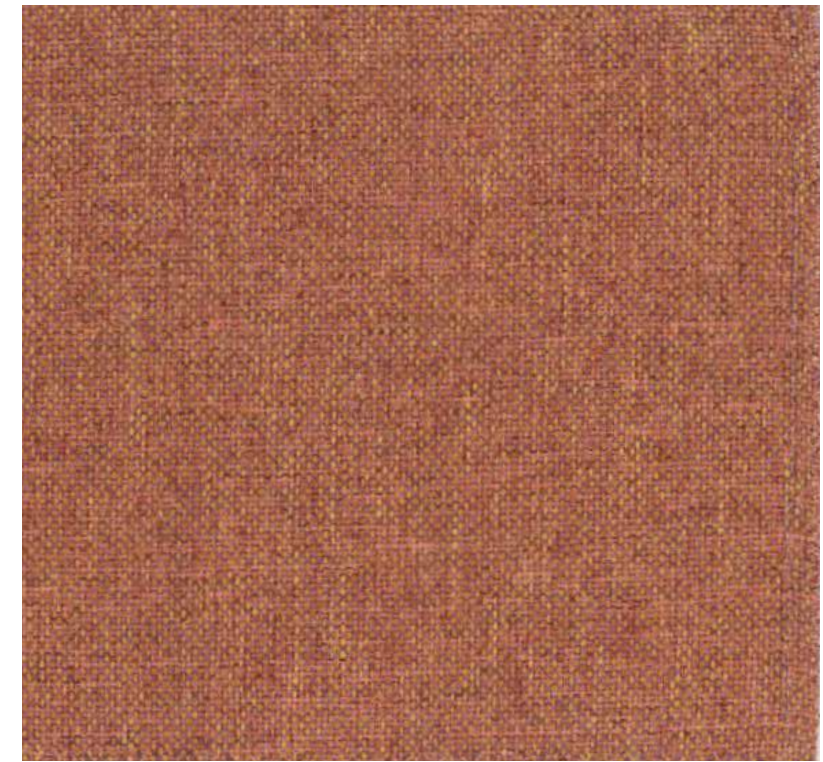
5504



8502



1504



5504

DAYTONA / CAT. TOP

IT

Composizione

51% Poliestere, 38% Acrilico, 11% Poliammide

Peso

gr./m² 395

Altezza

cm 140

Abrasione - Test Martindale

UNI EN ISO 12947 200.000 cicli

Solidità alla luce

UNI EN ISO 105-B02 6

Pulizia

Per la normale manutenzione del divano si consiglia di passare regolarmente l'aspirapolvere su tutta la superficie.

La tecnologia Aquaclean consente di eliminare piccole macchie come quelle di vino, caffè, cibo e persino la maggior parte dei pennarelli senza dover lavare con sapone o detersivo.

Per approfondimenti scansiona il codice QR.

Differenze colore

Leggere differenze di colori fra un bagno e l'altro sono da considerarsi normali.

Test reazione al fuoco

UK - BS EN 1021-1:2014 Parte 1-2

UK - BS 5852 Parte 1:1979

ISO 20743:2013 8.1

UNI 9175:1987 + A1:1994

DAYTONA / CAT. TOP

UK

Composition

51% Polyester, 38% Acrylic, 11% Polyamide

Weight

gr./m² 395

Width

cm 140

Abrasion test - Martindale

UNI EN ISO 12947 200.000 turns

Lightfastness

UNI EN ISO 105-B02 6

Cleaning

For normal sofa maintenance we recommend that you vacuum the entire surface area regularly.

Aquaclean Technology enables you to get rid of small stains such as wine, coffee, food and even most marker pens without having to wash with soap or detergent.

For more details scan the QR code.

Colour differences

Slight differences between colour batches have to be considered normal.

Fire reaction test

UK - BS EN 1021-1:2014 Parte 1-2

UK - BS 5852 Parte 1:1979

ISO 20743:2013 8.1

UNI 9175:1987 + A1:1994

Diemme.

aquaclean[®]
extreme



Leggi il codice QR
per saperne di più
sul metodo di
pulizia aquaclean[®]



STANDARD
100
2005AN5120
A1TEX

www.oeko-tex.com



DAYTONA / CAT. TOP



76



146



72



131



184



102



155



78



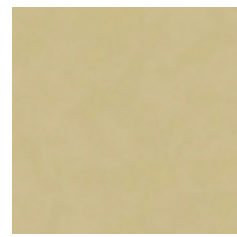
158



157



142



81



156



56



145



108



78

IMPERIA SPICE / CAT. TOP DAYTONA

IMPERIA / CAT. TOP

IT / EN

Composizione / Composition
100% Poliestere / 100 % Polyester

Peso / Weight
gr./m² 370

Altezza / Width
cm 140

Abrasione - Test Martindale / Abrasion
UNI EN ISO 12947-2 30.000 cicli / turns

Solidità alla luce / Lightfastness
UNI EN ISO 105-B02 4 (scale 1-8)

Pulizia / Cleaning
Non spazzolare e usare con regolarità l'aspirapolvere.
Do not brush and use the vacuum-cleaner regularly.

Differenze colore / Colour differences
Leggere differenze di colori fra un bagno e l'altro sono da considerarsi normali.
Slight differences between colour batches have to be considered normal.

Test reazione al fuoco / Fire reaction test
Italy - UNI 9175 Class 1
UNI EN 1021/1-2

SPICE / CAT. TOP

IT / EN

Composizione / Composition
100% Poliestere / 100 % Polyester

Peso / Weight
gr./m² 495

Altezza / Width
cm 140

Abrasione - Test Martindale / Abrasion
UNI EN ISO 12947-2 40.000 cicli / turns

Solidità alla luce / Lightfastness
UNI EN ISO 105-B02 4 (scale 1-8)

Pulizia / Cleaning
Non spazzolare e usare con regolarità l'aspirapolvere.
Do not brush and use the vacuum-cleaner regularly.

Differenze colore / Colour differences
Leggere differenze di colori fra un bagno e l'altro sono da considerarsi normali.
Slight differences between colour batches have to be considered normal.

Test reazione al fuoco / Fire reaction test
Italy - UNI 9175 Class 1
UNI EN 1021/1-2

DAYTONA / CAT. TOP

IT / EN

Composizione / Composition
51% Poliestere, 38% Acrilico, 11% Poliammide / 51% Polyester, 38% Acrylic, 11% Polyamide

Peso / Weight
gr./m² 395

Altezza / Width
cm 140

Abrasione - Test Martindale / Abrasion
UNI EN ISO 12947 200.000 cicli / turns

Solidità alla luce / Lightfastness
UNI EN ISO 105-B02 6

Test reazione al fuoco / Fire reaction test
UK - BS EN 1021-1:2014 Parte 1-2
UK - BS 5852 Parte 1:1979
ISO 20743:2013 8.1
UNI 9175:1987 + A1:1994

IMPERIA - SPICE - DAYTONA / CAT. TOP



IMPERIA 12



SPICE 4



IMPERIA 2



SPICE 3



IMPERIA 3



DAYTONA 146



DAYTONA 158



DAYTONA 145



DAYTONA 102



IMPERIA 7



SPICE 2



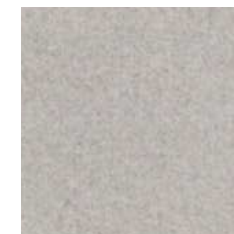
IMPERIA 9



DAYTONA 72



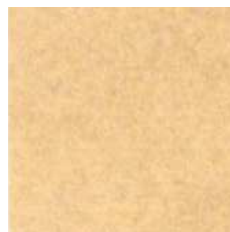
SPICE 6



DAYTONA 76



DAYTONA 184



DAYTONA 81



IMPERIA 1

IKON / CAT. TOP

IKON / CAT. TOP

IT

Composizione

63% Poliuretano, 29% Cotone, 8% Poliestere
Trattamento ULTRA-FRESH antibatterico e antiacaro.

Peso

gr./m² 480

Altezza

cm 140

Abrasion - Test Martindale

UNI EN ISO 5470-2 150.000 cicli

Solidità alla luce

UNI EN ISO 105-B02 5/6 (scale 1-8)

Pulizia

Spolverare delicatamente e in caso di macchie lievi passare la superficie con un panno umido o con una soluzione di detergente neutro, risciaquando con acqua senza strizzare. Per le macchie localizzate e più ostinate si consiglia di seguire le seguenti indicazioni: disciogliere tempestivamente la macchia con alcol etilico diluito (liquido incolore) in acqua al 20% tamponare e trattare successivamente con una soluzione di detergente neutro, risciaquare bene.

Differenze colore

Leggere differenze di colori fra una partita e l'altra sono da considerarsi normali.

Test reazione al fuoco

Italia - UNI 9175 Classe 1

UK - BS 5852 1- sezione 4 CRIB 5

EN 1021/1-2

USA - Cal TB 117 sezione E

IMO FTP CODE 2010

EN

Composition

63% Polyurethane, 29% Cotton, 8% Polyester
The article contains antibacterial agent, it is anti-allergic and waterproof.

Weight

gr./m² 480

Width

cm 140

Abrasion - Test Martindale

UNI EN ISO 12947-2 150.000 turns

Lightfastness

UNI EN ISO 105-B02 5/6 (scale 1-8)

Cleaning

Dust gently and in case of light stains pass the surface with a damp cloth or a neutral detergent, rinse with water without squeezing. The following instructions are recommended for small located and more obstinate stains: dissolve immediately with clear ethylic alcohol diluted in water to 20%, dab and then treat with a neutral detergent solution. Rinse abundantly.

Colour differences

Slight color differences between one lot and another have to be considered within commercial tolerance.

Fire reaction test

Italy - UNI 9175 Class 1

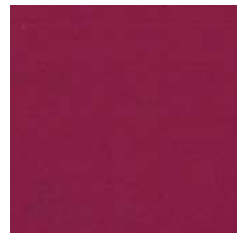
UK - BS 5852 1- sezione 4 CRIB 5

EN 1021/1-2

USA - Cal TB 117 sezione E

IMO FTP CODE 2010

IKON / CAT. TOP



1330



230



1830



930



330



2030



530



1430



1630



2230



1730



1130



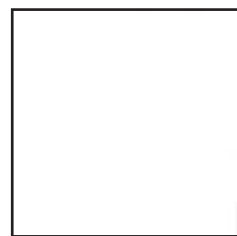
430



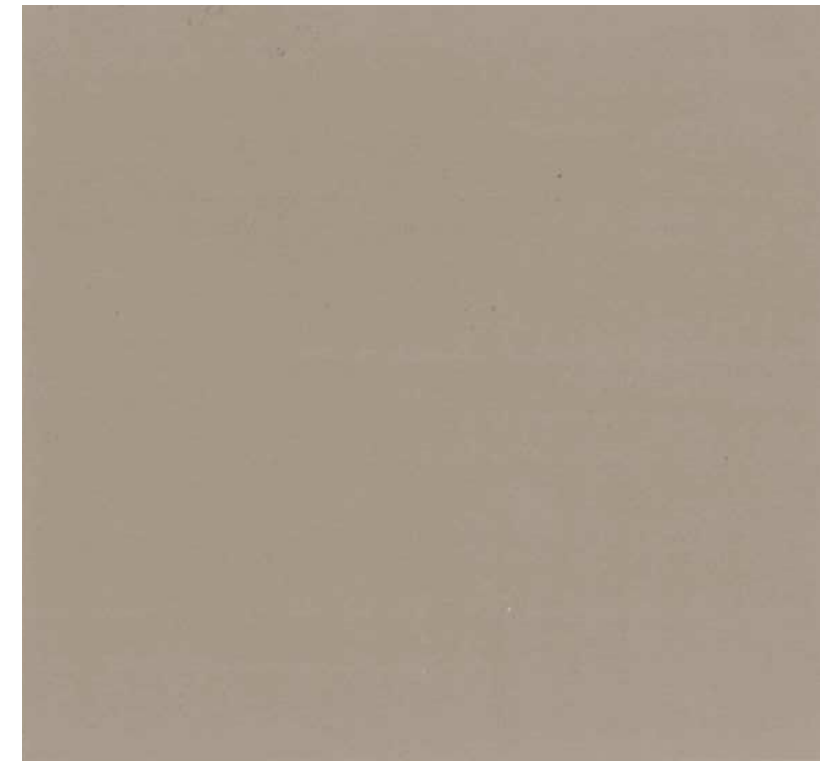
1030



1230



130



330

BLAZER / CAT. EXTRA

IT / EN

Composizione / Composition

100% Lana vergine / 100 % Virgin Wool

Peso / Weight

gr./m² 460

Altezza / Width

cm 140

Abrasione - Test Martindale / Abrasion

UNI EN ISO 12947-2 50.000 cicli / turns

Solidità alla luce / Lightfastness

UNI EN ISO 105-B02 5 (scale 1-8)

Pulizia / Cleaning

Non spazzolare e usare con regolarità l'aspirapolvere.

Do not brush and use the vacuum-cleaner regularly.

Differenze colore / Colour differences

Leggere differenze di colori fra un bagno e l'altro sono da considerarsi normali.

Slight differences between colour batches have to be considered normal.

Test reazione al fuoco / Fire reaction test

Italy - UNI 9175 Class 1

UK - BS 7176 LOW HAZARD

UK - BS 476 PART 7 CLASS 1

EN 1021/1-2

EN 13501-1 ADHERED CLASS D

BLAZER - HESTAN / CAT. EXTRA

HESTAN / CAT. EXTRA

IT / EN

Composizione / Composition

100% Poliestere ignifugo / 100 % Flame retardant

polyester

Peso / Weight

gr./m¹ 570

Altezza / Width

cm 140

Abrasione - Test Martindale / Abrasion

UNI EN ISO 12947-2 60.000 cicli / turns

Solidità alla luce / Lightfastness

UNI EN ISO 105-B02 6 (scale 1-8)

Pulizia / Cleaning

Non spazzolare e usare con regolarità l'aspirapolvere.

Do not brush and use the vacuum-cleaner regularly.

Differenze colore / Colour differences

Leggere differenze di colori fra un bagno e l'altro sono da considerarsi normali.

Slight differences between colour batches have to be considered normal.

Test reazione al fuoco / Fire reaction test

Italy - UNI 9175 Class 1

France - NF P 92/503-507, M1

UK - BS 5852 CRIB 5

Germany - DIN 4102, B1

EN 1021/1-2

USA - Cal TB 117

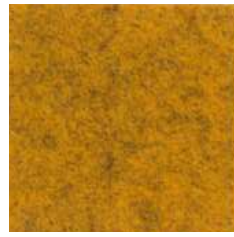
BLAZER - HESTAN / CAT. EXTRA



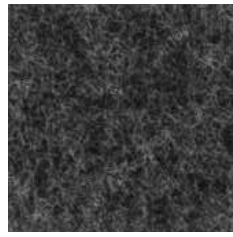
BLAZER CUZ08



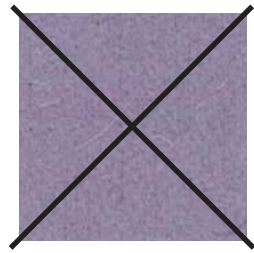
BLAZER CUZ2U



BLAZER CUZ82



BLAZER CUZ30



BLAZER CUZ1T



BLAZER CUZ33



BLAZER CUZ1M



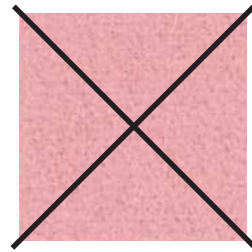
BLAZER CUZ1V



BLAZER CUZ47



BLAZER CUZ3A



BLAZER CUZ2R



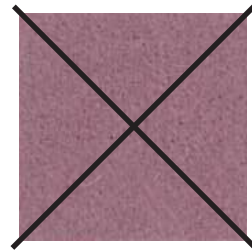
BLAZER CUZ39



BLAZER CUZ47



BLAZER CUZ28



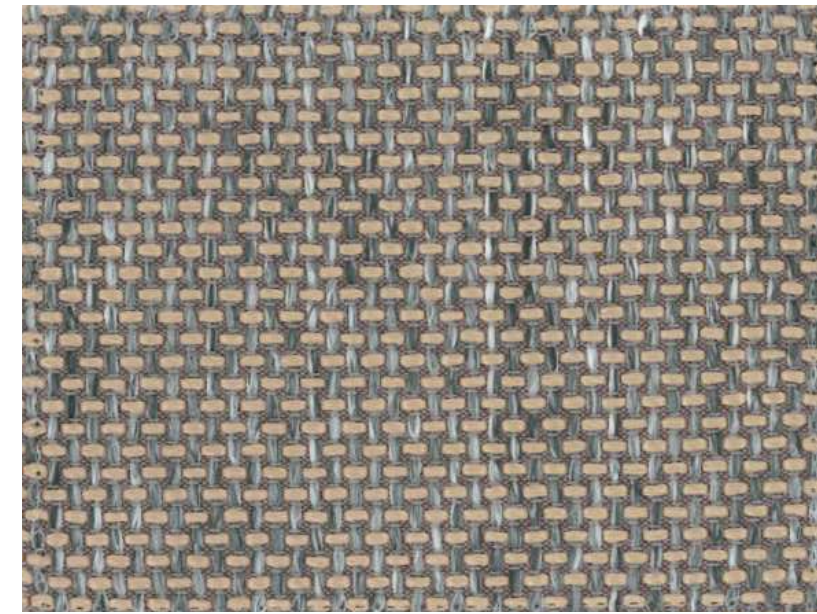
BLAZER CUZ3E



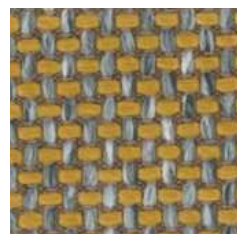
BLAZER CUZ86



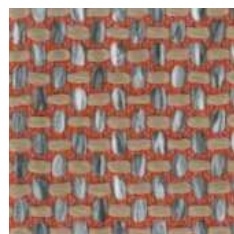
BLAZER CUZ53



HESTAN 7035.21



HESTAN 7035.20



HESTAN 7035.10



HESTAN 7035.21



HESTAN 7035.29



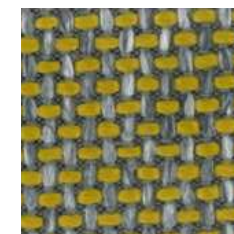
HESTAN 7035.26



HESTAN 7035.28



HESTAN 7035.03



HESTAN 7035.17

GORGEOUS / CAT. EXTRA

IT

Composizione

100 % PES FR - Trevira CS

Peso

gr./m² 450

Altezza

cm 140

Abrasion - Test Martindale

UNI EN ISO 12947-2 100.000 cicli

Solidità alla luce

Xenotest UNI EN ISO 105-B02 5 ± 1

Pulizia

Aspirare regolarmente. Pulizia a secco professionale, in alternativa pulire con un panno umido.

Differenze colore

Leggere differenze di colori fra un bagno e l'altro sono da considerarsi normali.

Test reazione al fuoco

Italia - UNI 8456-9174 - UNI 9175 Classe 1

Francia - Classe M1

Germania - Classe B1 DIN 4102

UK - BS 5852 CRIB 5

UNI EN 1021/1-2

IMO FTP CODE 2010

GORGEOUS / CAT. EXTRA

UK

Composition

100 % PES FR - Trevira CS

Weight

gr./m² 450

Width

cm 140

Abrasion test - Martindale

UNI EN ISO 12947/2 100.000 turns

Lightfastness

Xenotest UNI EN ISO 105-B02 5 ± 1

Cleaning

Vacuum regulary. Professionally dry clean or wipe clean with a damp cloth.

Colour differences

Slight differences between colour batches have to be considered normal.

Fire reaction test

Italy - UNI 8456-9174 - UNI 9175 Class 1

France - Class M1

Germany - Class B1 DIN 4102

UK - BS 5852 CRIB 5

UNI EN 1021/1-2

IMO FTP CODE 2010

GORGEOUS / CAT. EXTRA



2142



2103



2140



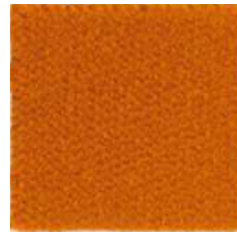
2158



2109



2102



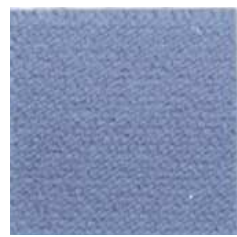
2111



2151



2156



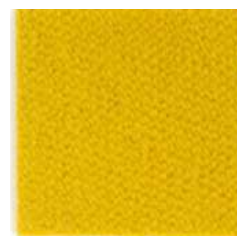
2130



2147



2144



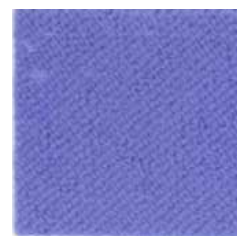
2106



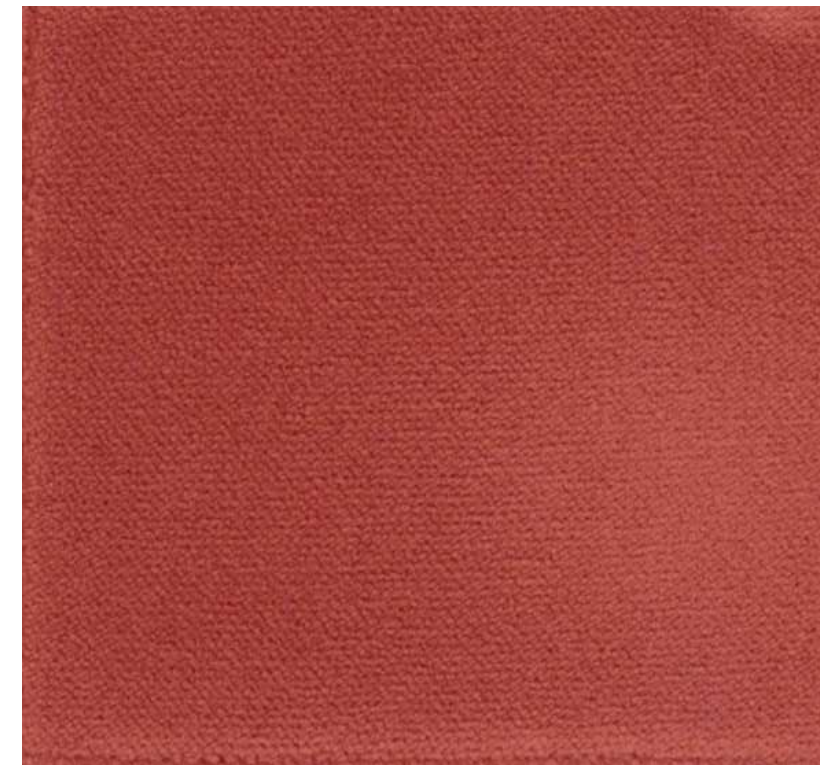
2152



2113



2129



2113

MOORE AUCKLAND / CAT. EXTRA FOSTER

Diemme.

MOORE / CAT. EXTRA

IT / EN

Composizione / Composition

100% Poliestere Riciclato FR / 100 % Recycled Polyester FR

Peso / Weight

gr./m¹ 835

Altezza / Width

cm 141

Abrasione - Test Martindale / Abrasion

UNI EN ISO 12947-2 70.000 cicli / turns

Solidità alla luce / Lightfastness

UNI EN ISO 105-B02 6 (scale 1-8)

Pulizia / Cleaning

Non spazzolare e usare con regolarità l'aspirapolvere.

Do not brush and use the vacuum-cleaner regularly.

Differenze colore / Colour differences

Leggere differenze di colori fra un bagno e l'altro sono da considerarsi normali.

Slight differences between colour batches have to be considered normal.

Test reazione al fuoco / Fire reaction test

Italy - UNI 9175 Class 1

France - Class 1

Germany - Class B1 DIN 4102

UK - BS 5852 CRIB 5

UNI EN 1021/1-2

USA - Cal TB 117

IMO 2010 FTP part 8



AUCKLAND / CAT. EXTRA

IT / EN

Composizione / Composition

76% Poliestere Riciclato FR, 24% Poliestere FR / 76% Recycled polyester FR, 24% Polyester FR

Peso / Weight

gr./m¹ 704

Altezza / Width

cm 141

Abrasione - Test Martindale / Abrasion

UNI EN ISO 12947-2 60.000 cicli / turns

Solidità alla luce / Lightfastness

UNI EN ISO 105-B02 6 (scale 1-8)

Pulizia / Cleaning

Non spazzolare e usare con regolarità l'aspirapolvere.

Do not brush and use the vacuum-cleaner regularly.

Differenze colore / Colour differences

Leggere differenze di colori fra un bagno e l'altro sono da considerarsi normali.

Slight differences between colour batches have to be considered normal.

Test reazione al fuoco / Fire reaction test

Italy - UNI 9175 Class 1

France - Class1

Germany - Class B1 DIN 4102

UK - BS 5852 CRIB 5

UNI EN 1021/1-2

USA - Cal TB 117

IMO 2010 FTP part 8



FOSTER / CAT. EXTRA

IT / EN

Composizione / Composition

97% Poliestere Riciclato FR, 3% Poliestere FR / 97% Recycled Polyester FR, 3% Polyester FR

Peso / Weight

gr./m¹ 749

Altezza / Width

cm 141

Abrasione - Test Martindale / Abrasion

UNI EN ISO 12947-2 60.000 cicli / turns

Solidità alla luce / Lightfastness

UNI EN ISO 105-B02 6 (scale 1-8)

Pulizia / Cleaning

Non spazzolare e usare con regolarità l'aspirapolvere.

Do not brush and use the vacuum-cleaner regularly.

Differenze colore / Colour differences

Leggere differenze di colori fra un bagno e l'altro sono da considerarsi normali.

Slight differences between colour batches have to be considered normal.

Test reazione al fuoco / Fire reaction test

Italy - UNI 9175 Class 1

France - Class 1

Germany - Class B1 DIN 4102

UK - BS 5852 CRIB 5

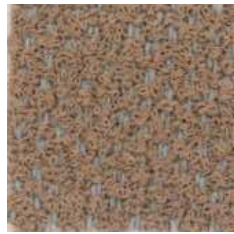
UNI EN 1021/1-2

USA - Cal TB 117

IMO 2010 FTP part 8



MOORE - AUCKLAND - FOSTER / CAT. EXTRA



FOSTER 7072.03



MOORE 7075.07



MOORE 7075.08



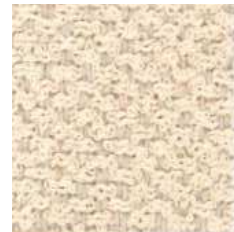
FOSTER 7072.07



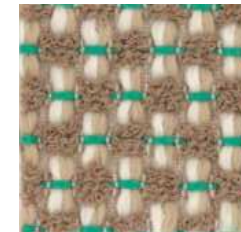
MOORE 7075.12



FOSTER 7072.02



FOSTER 7072.04



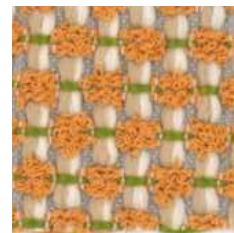
MOORE 7075.11



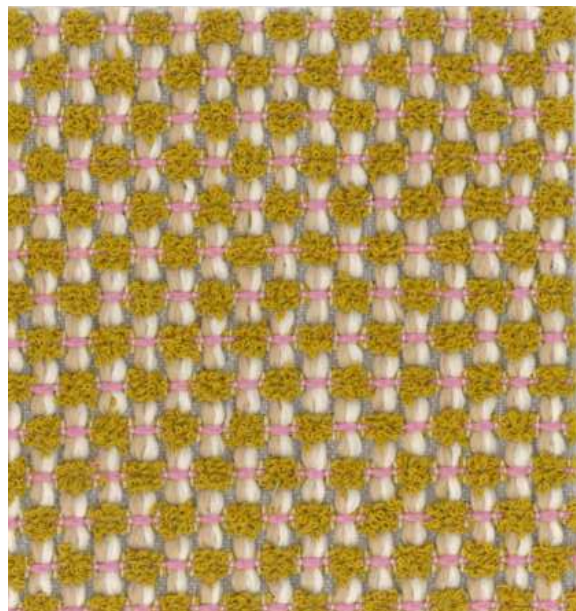
FOSTER 7072.17



FOSTER 7072.05



MOORE 7075.04



MOORE 7075.03



AUCKLAND 7071.14



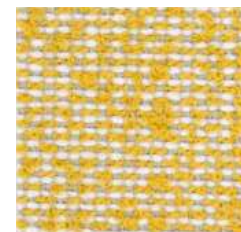
AUCKLAND 7071.19



FOSTER 7072.19



MOORE 7075.05



AUCKLAND 7071.16



FOSTER 7072.01



AUCKLAND 7071.17

POLO / CAT. FIESTA

IT

Composizione

Pelle bovina

Spessore

0,9 - 1,0 mm

Caratteristiche

Pelle bovina di provenienza Europea, conciata al cromo tintura passante in botte e fiore leggermente smerigliato. Tutte le lavorazioni sono effettuate con la massima attenzione alla qualità del prodotto e al rispetto dell'ambiente mediante utilizzo di prodotti a norma CEE. Le eventuali piccole imperfezioni, cicatrici ed irregolarità di stampa non sono da considerarsi difetti ma pregi che determinano la garanzia della vera pelle.

Differenza colore

I prodotti chimici necessari alla produzione della pelle, utilizzati per la concia, la tintura e la rifinizione dei grezzi, non contengono sostanze nocive alla salute ed all'ambiente. Per motivi tecnici non è possibile garantire la stessa tonalità del colore tra una partita e l'altra.

Pulizia e manutenzione

Per la normale pulizia spolverare periodicamente con un panno pulito, morbido e asciutto. Eventuali macchie possono essere rimosse usando un panno pulito, morbido e asciutto. Evitare di strofinare la superficie da trattare, ma tamponare, dall'esterno verso l'interno della macchia. Non asciugare la pelle alla luce del sole o con l'asciugacapelli. Non utilizzare mai sostanze detergenti non consigliate in quanto possono danneggiare il rivestimento in pelle causando crepe o scolorimento. Per mantenere vivo il colore del rivestimento, evitare l'esposizione del manufatto in pelle alla luce diretta del sole.

Test reazione al fuoco

British Standard BS 5852 Part 1 (1979)

IMO FTP:Part 8-Resolution A.652 (16)

TB 117-A11@2013 Cigarette Test (California)

POLO / CAT. FIESTA

EN

Composition

Bovine leather

Thickness

0,9 - 1,0 mm

Characteristics

First choice corrected quality European fine bovine leather, chromium tanned in barrel and grain surface lightly sanded. All our working methods are carried out respecting the environment and meet CEE standard duties.

Flaws and irregularities are not to be considered as defects, but qualities that guarantee true leather.

Colour differences

The chemicals needed for the production of leather, used for the tanning, the dyeing and the finishing of the raw hides, do not contain substances which can be harmful for health or the environment. Due to technical reasons it is not possible to guarantee the same tonality of colour from one bath to another.

Cleaning and care

For normal cleaning just dust the leather with a clean, soft dry cloth. Any stains can be removed using a damp cloth and mild white detergent. Do not rub the surface but dab it from the outside towards the inside of the stain. Do not dry the leather in the sunlight or with a hair dryer. Do not use detergents that are not specific for leather, as they can damage the surface causing it to crack or fade. To keep the colours bright, do not expose the leather to direct sunlight.

Fire reaction test

British Standard BS 5852 Part 1 (1979)

IMO FTP:Part 8-Resolution A.652 (16)

TB 117-A11@2013 Cigarette Test (California)

POLO / CAT. FIESTA



837



824



813



843



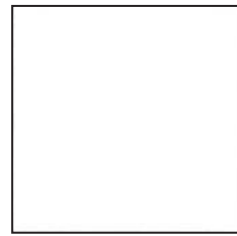
833



933



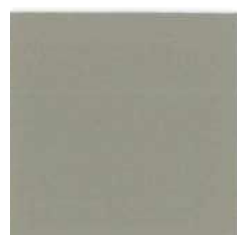
878



810



822



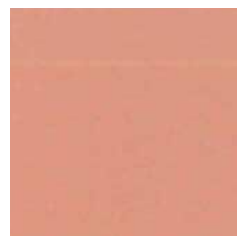
827



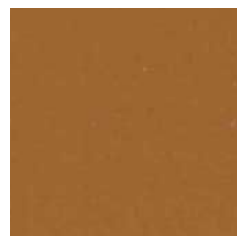
844



881



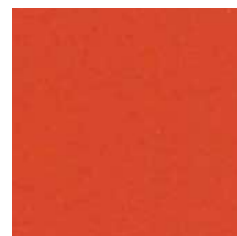
847



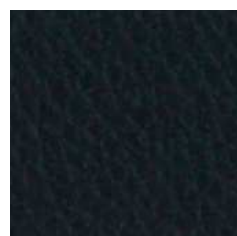
818



859



839



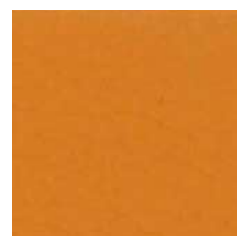
860



853



861



838



824

kvadrat

REMIX 3 / CAT. NUVOLA

Remix 3

Designed by Giulio Ridolfo

Remix 3, 140x140 cm, 420 g/lbm, 90% nylon, 10% kamgarn, 10% nyld, nuanceforskelt materialefarvet.

DK
Anvendelse Kontorer, hoteller, institutioner, private indretninger. Stor slidstyrke.
Beskrivelse 90% ny uld, kamgarn, 10% nylon. Bredder ca. 140 cm. Vægt ca. 420 g/lbm. Materialefarvet. Nuanceforskelt kan forekomme.
Ægkant ↔
Slidstyrke: Ca. 100.000 slidbevægelser efter Martindale metoden EN ISO 12947.
Lysægthed (ISO) 5-7.
Pilling (EN ISO) 4.
Gnidægthed (ISO) tør 4-5, våd 3-5.
Lydabsorption (EN ISO 354) 0.55/Class D (fladt), 0.80/Class B (foldet).
Airflow 465 Pa s/m.
Flammesikring: AS/NZS 1530.3. AS/NZS 3837 Class 2. ASTM E84 class A. BS 5852 Crib 5 med flammesikring. BS 5852 ignition source 3. BS 5852 part 1. EN 1021-1/2. GB 50222 B1 med flammesikring. IMO FTP Code 2010:Part 7 med flammesikring. IMO FTP Code 2010:Part 8. NF D 60 013. NFPA 260. SN 198 898 5.3 med flammesikring. UNI 9175 11M. US Cal. Bull. 117-2013. ÖNORM B1 / Q1. (Kopi af testrapport kan rekvireres).
Vedligeholdelse Se ISO symboler.

UK/US
Application Offices, hotels, institutions, domestic use. Great durability.
Description 90% new wool, worsted, 10% nylon. Width app. 55 inches (140 cm). Weight app. 13.5 oz/ly (420 g/lin.m). Material dyed. Colour differences may occur.
Selvedge/Direction ↔
Abrasion: App. 100,000 rubs acc. to the Martindale method EN ISO 12947.
Lightfastness (ISO) 5-7.
Pilling (EN ISO) 4.
Fastness to rubbing (ISO) dry 4-5, wet 3-5.
Sound absorption (EN ISO 354) 0.55/Class D (flat), 0.80/Class B (waved).
Airflow 465 Pa s/m.
Flame resistance: AS/NZS 1530.3. AS/NZS 3837 Class 2. ASTM E84 class A. BS 5852 Crib 5 with treatment. BS 5852 ignition source 3. BS 5852 part 1. EN 1021-1/2. GB 50222 B1 with treatment. IMO FTP Code 2010:Part 7 with treatment. IMO FTP Code 2010:Part 8. NF D 60 013. NFPA 260. SN 198 898 5.3 with treatment. UNI 9175 11M. US Cal. Bull. 117-2013. ÖNORM B1 / Q1. (Copy of test report available).
Care Please see the ISO symbols.

DE
Anwendungsbereich Büros, Hotels, Objectbereich, privaten Wohnbereich. Hohe Strapazierfähigkeit.
Beschreibung 90% Schurwolle, Kammgarn, 10% Nylon. Breite ca. 140 cm. Gewicht ca. 420 g/lfd.m. Materialgefärbt. Farbunterschiede können vorkommen.
Webkant ↔
Scheuerfestigkeit: Ca. 100.000 Scheuerhübe gemäss der Martindale Methode EN ISO 12947.
Lichtechtheit (ISO) 5-7.
Pilling (EN ISO) 4.
Reibechtheit (ISO) trocken 4-5, nass 3-5.
Schallabsorption (EN ISO 354) 0.55/Class D (glatt), 0.80/Class B (gefaltet).
Airflow 465 Pa s/m.
Flammschutz: AS/NZS 1530.3. AS/NZS 3837 Class 2. ASTM E84 class A. BS 5852 Crib 5 mit Ausrüstung. BS 5852 ignition source 3. BS 5852 part 1. EN 1021-1/2. GB 50222 B1 mit Ausrüstung. IMO FTP Code 2010:Part 7 mit Ausrüstung. IMO FTP Code 2010:Part 8. NF D 60 013. NFPA 260. SN 198 898 5.3 mit Ausrüstung. UNI 9175 11M. US Cal. Bull. 117-2013. ÖNORM B1 / Q1. (Kopie von Prüfungsbericht verfügbar).
Pflege Siehe ISO Pflegesymbole.

NL
Toeassing Kantoren, hotels, instellingen, de privésteer. Uitstekende slijtvastheid.
Omschrijving 90% scheerwol, kamgaren, 10% nylon. Breedte ca. 140 cm. Gewicht ca. 420 g/str. m. Materiaalgeverfd. Kleurverschillen kunnen optreden.
Zelfkant ↔
Slijtvastheid: Ca. 100.000 toeren Martindale EN ISO 12947.
Lichtechtheid (ISO) 5-7.
Pilling (EN ISO) 4.
Wrijftechtheid (ISO) droge 4-5, natte 3-5.
Geluidsabsorptie (EN ISO 354) 0.55/Class D (vlak), 0.80/Class B (geplooid).
Airflow 465 Pa s/m.
Brandwerendheid: AS/NZS 1530.3. AS/NZS 3837 Class 2. ASTM E84 class A. BS 5852 Crib 5 met behandeling. BS 5852 ignition source 3. BS 5852 part 1. EN 1021-1/2. GB 50222 B1 with treatment. IMO FTP Code 2010:Part 7 met behandeling. IMO FTP Code 2010:Part 8. NF D 60 013. NFPA 260. SN 198 898 5.3 met behandeling. UNI 9175 11M. US Cal. Bull. 117-2013. ÖNORM B1 / Q1. (Op aanvraag sturen wij U graag een kopie van het testrapport toe).
Onderhoud Zie de ISO symbolen.

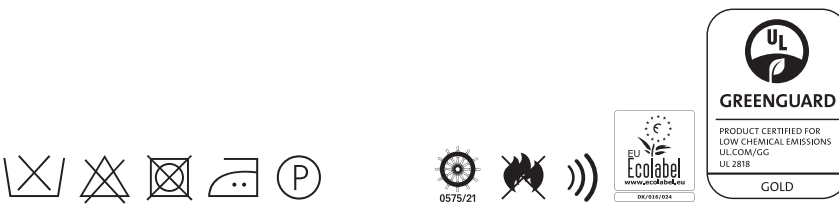
FR
Domaine d'utilisation Tissu d'aménagement pour aménagement privé et public. Grande résistance.
Description 90% laine vierge, peigné, 10% nylon. Largeur env. 140 cm. Poids env. 420 g/m lg. Teinture en bourre. Ecart des coloris possibles.
Lisière ↔
Résistance à l'abrasion: Env. 100.000 révolutions selon le procédé Martindale EN ISO 12947.
Résistance à la lumière (ISO) 5-7.
Boulochage (EN ISO) 4.
Résistance au frottement (ISO) sec 4-5, mouillé 3-5.
Absorption acoustique (EN ISO 354) 0.55/Class D (à plat), 0.80/Class B (plié).
Airflow 465 Pa s/m.
Normes au feu: AS/NZS 1530.3. AS/NZS 3837 Class 2. ASTM E84 class A. BS 5852 Crib 5 avec traitement. BS 5852 ignition source 3. BS 5852 part 1. EN 1021-1/2. GB 50222 B1 avec traitement. IMO FTP Code 2010:Part 7 avec traitemnt. IMO FTP Code 2010:Part 8. NF D 60 013. NFPA 260. SN 198 898 5.3 avec traitement. UNI 9175 11M. US Cal. Bull. 117-2013. ÖNORM B1 / Q1. (La copie du compte rendu des tests est disponible sur demande).
Entretien Voir les symboles ISO.

IT
Destinazione d'uso Rivestimento per imbottiti casa e contract. Alta resistenza all'abrasione.
Caratteristiche 90% lana vergine, pettinata, 10% nylon. Altezza circa 140 cm. Peso circa 420 gr/mtl. Tinto in fiocco. Possibili differenze per colore.
Cimosa ↔
Abrasion: Circa 100.000 cicli/metodo Martindale EN ISO 12947.
Resistenza alla luce (ISO) 5-7.
Pilling (EN ISO) 4.
Resistenza allo sfregamento (ISO) condizione a secco 4-5, condizione umido 3-5.
Assorbimento acustico (EN ISO 354) 0.55/Class D (tenda a pannello (tesa)), 0.80/Class B (tenda arricciata).
Airflow 465 Pa s/m.
Ignifugazione: AS/NZS 1530.3. AS/NZS 3837 Class 2. ASTM E84 class A. BS 5852 Crib 5 trattato ignifugo. BS 5852 ignition source 3. BS 5852 part 1. EN 1021-1/2. GB 50222 B1 trattato ignifugo. IMO FTP Code 2010:Part 7 trattato ignifugo. IMO FTP Code 2010:Part 8. NF D 60 013. NFPA 260. SN 198 898 5.3 trattato ignifugo. UNI 9175 11M. US Cal. Bull. 117-2013. ÖNORM B1 / Q1. (Disponibile copia del test).
Manutenzione Per favore seguire simboli ISO.

ES
Aplicación Adecuado, para el uso en oficinas, hoteles, instituciones y hogares. Gran resistencia al desgaste.
Descripción 90% lana virgen, peinada, 10% nilón. Anchura aprox. 140 cm. Peso aprox. 420 gr/ml. Teñido en material. Posibles variaciones de color.
Filo ↔
Resistencia al desgaste: Aprox. 100.000 ciclos según el método Martindale EN ISO 12947.
Resistencia a la luz (ISO) 5-7.
Relleño (EN ISO) 4.
Solidez al frotamiento (ISO) seco 4-5, mojado 3-5.
Absorción acústica (EN ISO 354) 0.55/Class D (estor), 0.80/Class B (cortina).
Airflow 465 Pa s/m.
Resistencia al fuego: AS/NZS 1530.3. AS/NZS 3837 Class 2. ASTM E84 class A. BS 5852 Crib 5 con tratamiento. BS 5852 ignition source 3. BS 5852 part 1. EN 1021-1/2. GB 50222 B1 con tratamiento. IMO FTP Code 2010:Part 7 con tratamiento. IMO FTP Code 2010:Part 8. NF D 60 013. NFPA 260. SN 198 898 5.3 con tratamiento. UNI 9175 11M. US Cal. Bull. 117-2013. ÖNORM B1 / Q1. (Copia del informe de ensayos disponible).
Limpieza Consulte los símbolos ISO.

JP
用途 オフィス、ホテル、各種施設、住宅インテリア。耐耗性大。
詳細 90% ニューウールウーステッド、10% ナイロン。幅：140 cm。重量：1mあたり約420 g。布染め。色彩ニュアンスに多少の違いが生じる可能性あり。
耳、**ふち**、**↔**
テスト:
磨耗: マーチンデール法により摩擦お運動約100,000回。EN ISO 12947.
色褪せ保証: (ISO) 5-7.
ピリング (EN ISO) 4.
摩擦保証: (ISO) 乾燥状態 4-5、濡れた状態 3-5.
吸音率 (EN ISO 354) 0.55/Class D (パネル状)、0.80/Class B (ドレープ状)。
気流: 465 Pa s/m.
耐炎性: AS/NZS 1530.3。AS/NZS 3837 Class 2。ASTM E84 class A。特殊耐炎処理を行うことにより、BS 5852 Crib 5 に到達可能。BS 5852 ignition source 3, BS 5852 part 1, EN 1021-1/2. 特殊耐炎処理を行うことにより、GB 50222 B1 に到達可能。特殊耐炎処理を行うことにより、IMO FTP Code 2010:Part 7 に到達可能。IMO FTP Code 2010:Part 8. NF D 60 013. NFPA 260. 特殊耐炎処理を行うことにより、SN 198 898 5.3 に到達可能。UNI 9175 11M。US Cal. Bull. 117-2013。ÖNORM B1 / Q1。(テストレポートのコピー入手可能。)
手入れ ISO シンボル参照。

CN
适用范围 办公室、宾馆酒店、公共设施、居家使用。耐耗性大。
成分 90%新羊毛，精纺，10%尼龙。幅宽约55英寸(140cm)。重量约420克/延米。原材料染色面料。颜色可能稍有色差。
纹理方向 ↔
马丁代尔法约100,000转。EN ISO 12947.
光黑色牢度 (ISO) 5-7.
起毛起球 (EN ISO) 4.
磨擦色牢度(ISO) 干燥4-5、湿3-5.
吸声系数 (EN ISO 354) 0.55/Class D (隔断帘)、0.80/Class B (一般窗帘使用)。
气流阻力 465 Pa s/m.
阻燃性: AS/NZS 1530.3, AS/NZS 3837 Class 2, ASTM E84 class A。特别耐火处理时BS 5852 Crib 5 可以满足。BS 5852 ignition source 3, BS 5852 part 1, EN 1021-1/2. 特别耐火处理时GB 50222 B1 可以满足。特别耐火处理时IMO FTP Code 2010:Part 7 可以满足。IMO FTP Code 2010:Part 8, NF D 60 013, NFPA 260. 特别耐火处理时SN 198 898 5.3 可以满足。UNI 9175 11M, US Cal. Bull. 117-2013, ÖNORM B1 / Q1。(可提供测试报告副本)。
维护 请参照ISO标志。



Quality and environmental system accreditation according to ISO 9001 and ISO 14001.

*ACT® Registered Certification Marks

Encouraging the use of sustainable fibres. Durable and high quality. Hazardous substances restricted.

Contact and further information www.kvadrat.dk

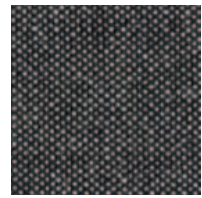
Diemme.

US contact info: 1-800-620-9309

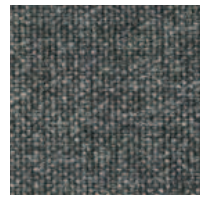
10 year warranty



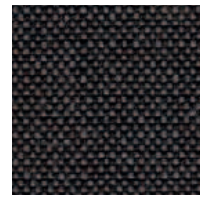
REMIX 3 / CAT. NUVOLA



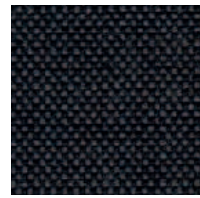
152



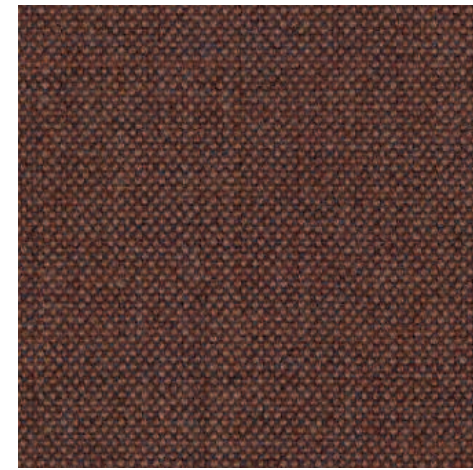
163



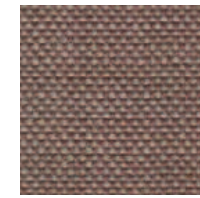
276



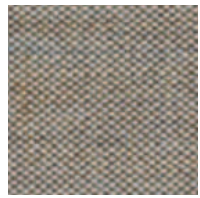
286



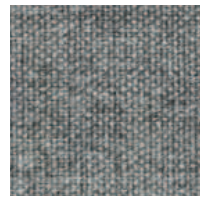
346



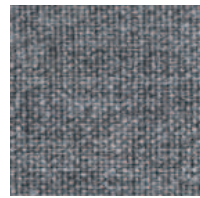
326



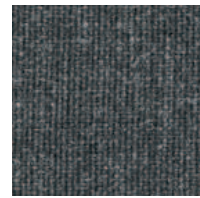
242



133



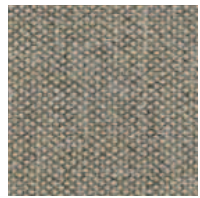
143



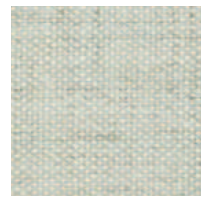
173



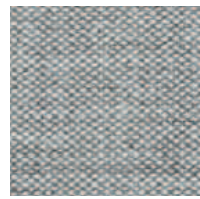
356



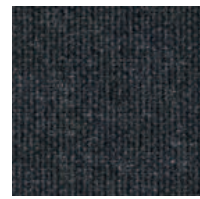
233



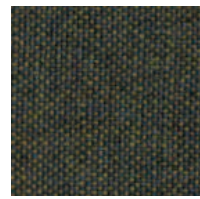
113



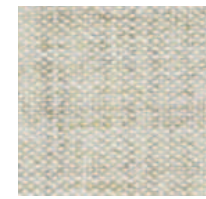
123



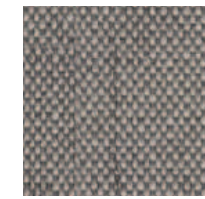
183



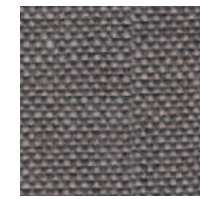
842



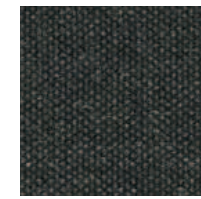
223



126



136



393



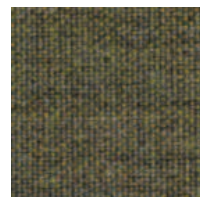
906



196



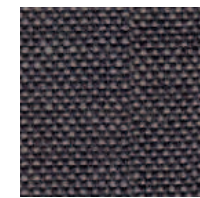
954



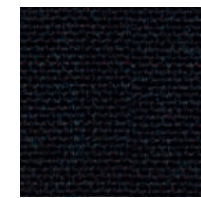
962



682



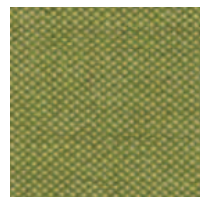
266



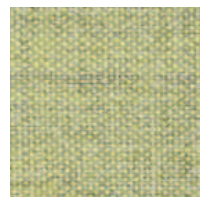
296



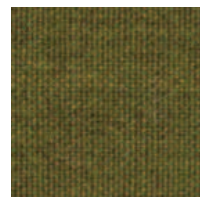
406



912



923



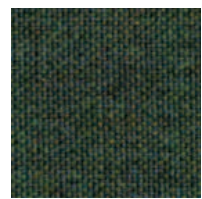
412



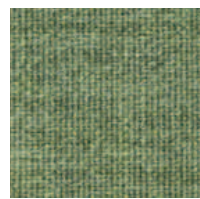
686



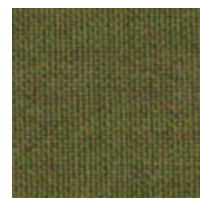
252



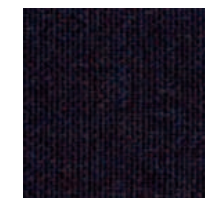
982



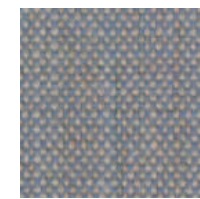
933



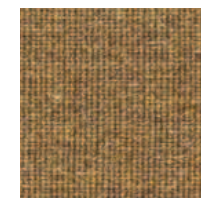
942



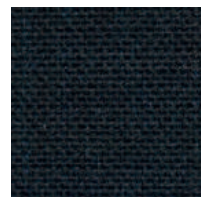
692



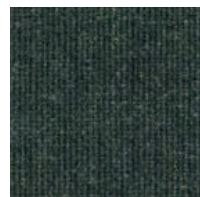
606



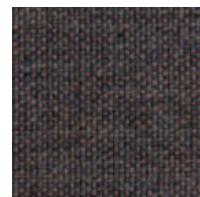
433



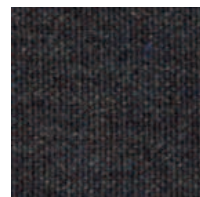
996



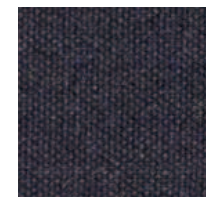
973



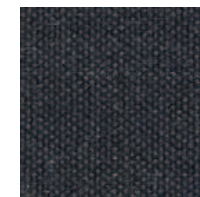
672



362



783



383

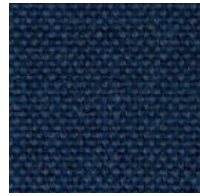


422



452

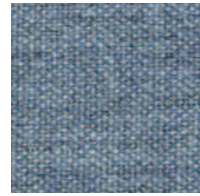
REMIX 3 / CAT. NUVOLA



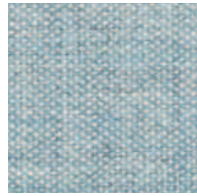
866



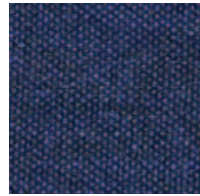
836



733



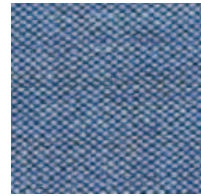
823



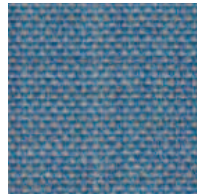
773



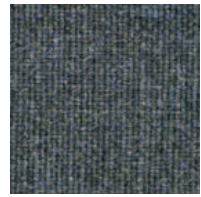
796



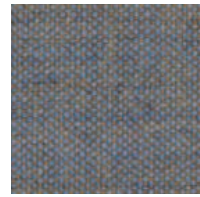
743



816



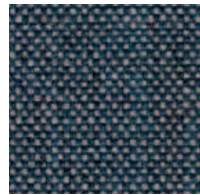
753



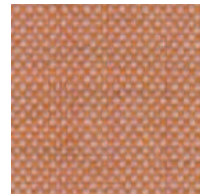
722



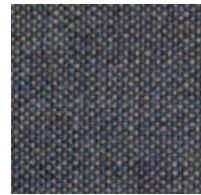
762



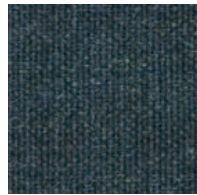
716



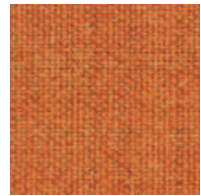
516



852



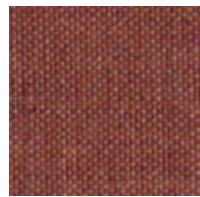
873



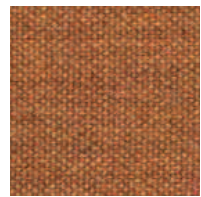
543



536



632



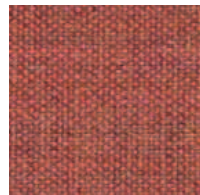
443



612



373



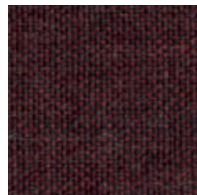
653



643



566



662

NUVOLA / CAT. NUVOLA

NUVOLA / CAT. NUVOLA

IT / EN

Composizione / Composition

Pelle bovina

Spessore / Thickness

1,1 - 1,2 mm

Caratteristiche / Characteristics

La qualità della pelle Nuvola, deriva da una migliore scelta dei grezzi di origine Europea e da una maggiore attenzione in tutte le fasi della lavorazione. I prodotti usati per la concia, per la tintura, e per il finissaggio rispettano pienamente le normative CEE e non contengono sostanze nocive per la salute. Le eventuali piccole imperfezioni, cicatrici ed irregolarità di stampa non sono da considerarsi difetti ma pregi che determinano la garanzia della vera pelle.

The quality of Nuvola leather is due to a better choice of bovines coming from Europe and to a greater attention during all the working process. The products used for tanning, dyeing and finishing are in conformity with CEE rules and they are not toxic for human health. Flaws and irregularities are not to be considered as defects, but qualities that guarantee true leather.

Test reazione al fuoco / Fire reaction test

British Standard UNI EN ISO 1021:2014

TB 117-A11@20132013 Cigarette Test (California)

IMO FTP:Part 8-Resolution A.652 (16)

MONTANA / CAT. NUVOLA

IT / EN

Composizione / Composition

Pelle bovina

Spessore / Thickness

0,9 - 1,0 mm

Caratteristiche / Characteristics

La qualità della pelle Montana, deriva da una migliore scelta dei grezzi di origine Europea e da una maggiore attenzione in tutte le fasi della lavorazione. Una pelle pieno fiore tinta all'anilina passante in botte, Montana viene sottoposta ad un'asciugatura sottovuoto che ne esalta appieno le caratteristiche originali. Montana presenta una mano eccezionalmente setosa, data da una rifinitura ad effetto cerato.

The quality of Nuvola leather is due to a better choice of bovines coming from Europe and to a greater attention during all the working process. Montana is an aniline drum-dyed, full-grain leather that undergoes a gentle vacuum drying process, exalting all the hide's distinctive markings. Montana exhibits an exceptionally silky feel, given by a mild wax finishing.

Test reazione al fuoco / Fire reaction test

British Standard BS 5852 Part 1 (1979)

TB 117-A11@20132013 Cigarette Test (California)

IMO FTP:Part 8-Resolution A.652 (16)

Differenza colore / Colour differences

I prodotti chimici necessari alla produzione della pelle, utilizzati per la concia, la tintura e la rifinitura dei grezzi, non contengono sostanze nocive alla salute ed all'ambiente. Per motivi tecnici non è possibile garantire la stessa tonalità del colore tra una partita e l'altra.

The chemicals needed for the production of leather, used for the tanning, the dyeing and the finishing of the raw hides, do not contain substances which can be harmful for health or the environment. Due to technical reasons it is not possible to guarantee the same tonality of colour from one bath to another.

Pulizia e manutenzione / Cleaning and care

Per la normale pulizia spolverare periodicamente con un panno pulito, morbido e asciutto. Eventuali macchie possono essere rimosse usando un panno pulito, morbido e asciutto. Evitare di strofinare la superficie da trattare, ma tamponare, dall'esterno verso l'interno della macchia. Non asciugare la pelle alla luce del sole o con l'asciugacapelli. Non utilizzare mai sostanze detergenti non consigliate in quanto possono danneggiare il rivestimento in pelle causando crepe o scolorimento. Per mantenere vivo il colore del rivestimento, evitare l'esposizione del manufatto in pelle alla luce diretta del sole.

For normal cleaning just dust the leather with a clean, soft dry cloth. Any stains can be removed using a damp cloth and mild white detergent. Do not rub the surface but dab it from the outside towards the inside of the stain. Do not dry the leather in the sunlight or with a hair dryer. Do not use detergents that are not specific for leather, as they can damage the surface causing it to crack or fade. To keep the colours bright, do not expose the leather to direct sunlight.

NUVOLA / CAT. NUVOLA



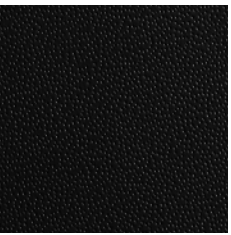
500



508



522



569



N98



N47



533



501



513



510



526

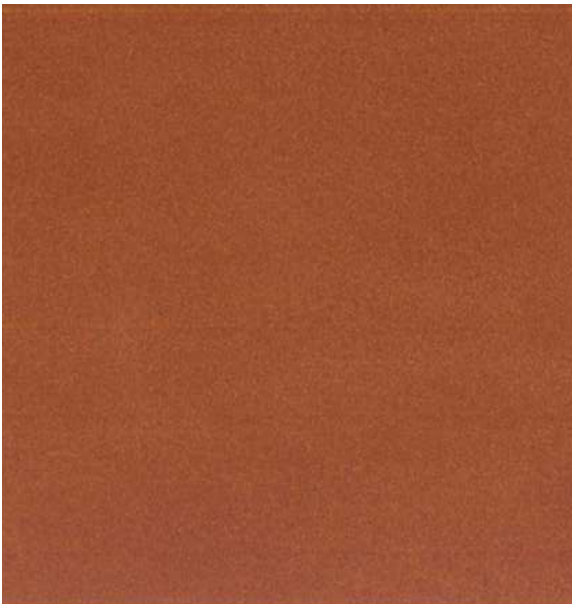


553



553

MONTANA / CAT. NUVOLA



*MONTANA 1301 CUOIO

***Pelle Montana 1301 Cuio**

Pelle **Montana** disponibile solo per articolo **Musa**. Per altri articoli richiedere quotazione.

RETI

RETE R01

IT / EN

Composizione / Composition

70% PVC, 30% Poliestere / 70% PVC, 30% Polyester

Peso / Weight

gr./m¹ 560

Abrasione - Test Martindale / Abrasion

UNI EN ISO 12947-2 100.000 cicli / turns

Solidità alla luce / Lightfastness

UNI EN ISO 105-B02 8 (scala blu / blu scale)

Tolleranza da 5 a 8 / Tolerance from 5 to 8

Resistenza alla fatica / Fatigue strength

EN 1728:2000 EN 15373:2007 livello 3° severo / 3°

hard level 200.000 cicli / turns / 1.000 N

Pulizia / Cleaning

Usare con regolarità l'aspirapolvere. Lavare con acqua e sapone neutro.

Use the vacuum-cleaner regularly. Wash with water and neutral soap.

Test reazione al fuoco / Fire reaction test

* Italy - UNI 9174 Class 1

* Omologazione ministeriale al fuoco in classe 1 con RETE R01 disponibile sui prodotti (Cfr listino).

RETE R02

IT / EN

Composizione / Composition

100% Poliestere / 100% Polyester

Peso / Weight

gr./m² 260

Abrasione - Test Martindale / Abrasion

UNI EN ISO 12947-2 70.000 cicli / turns

Solidità alla luce / Lightfastness

UNI EN ISO 105-B02 6 (scala blu / blu scale)

Tolleranza da 5 a 8 / Tolerance from 5 to 8

Solidità allo sfregamento / Fastness to rubbing

EN ISO 105-X12 4/5 (scala dei grigi)

Tolleranza da 4 a 5

Pulizia / Cleaning

Lavare con acqua e sapone neutro.

Wash with water and neutral soap.

Test reazione al fuoco / Fire reaction test

Italy - UNI 9174 Class 1

France - Class M1

Germany - Class B1 DIN 4102

USA - Cal TB 117

EN 1021/1-2

UK - BS 5852 CRIB 5

UK - BS 7176 MEDIUM HAZARD



RETE R03

IT / EN

Composizione / Composition

70% Nylon, 30% Poliestere / 70% Nylon, 30% Polyester

Peso / Weight

gr./m² 420

Abrasione - Test Martindale / Abrasion

UNI EN ISO 12947-2 100.000 cicli / turns

Solidità alla luce / Lightfastness

Xenotest - Lampada ad arco scala di grigi 20AFU - 4.5

Xenotest - Arc Lamp Gray scale 20AFU - 4.5

Solidità allo sfregamento / Fastness to rubbing

EN ISO 105-X12 4/5 (scala dei grigi)

Tolleranza da 4 a 5

Pulizia / Cleaning

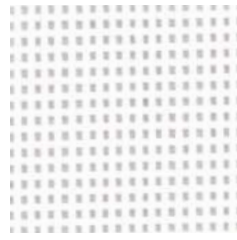
Lavare con acqua e sapone neutro.

Wash with water and neutral soap.

Test reazione al fuoco / Fire reaction test

USA - TB 117-2013

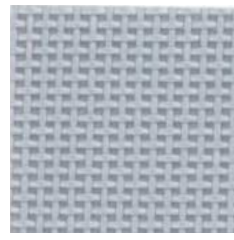
RETE R01



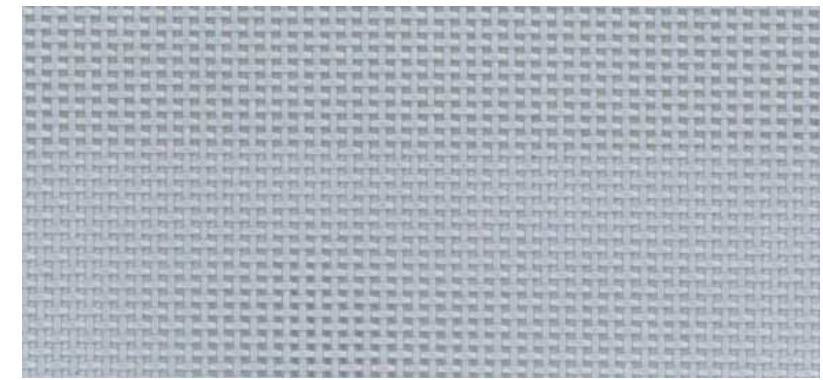
FB0538



FN0538

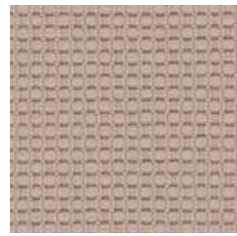


FG0538

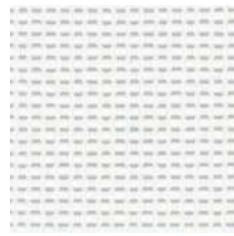


FG0538

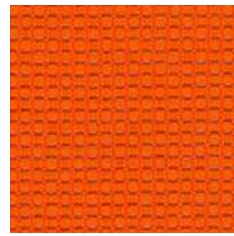
RETE R02



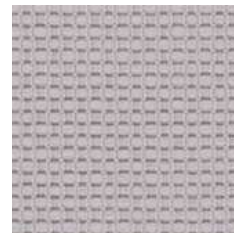
1008



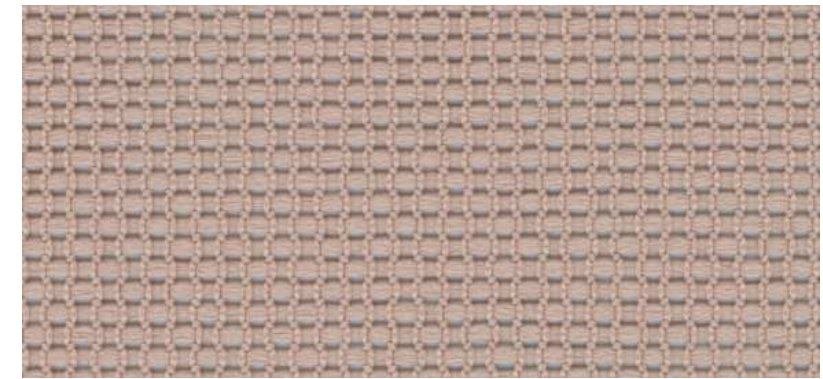
0001



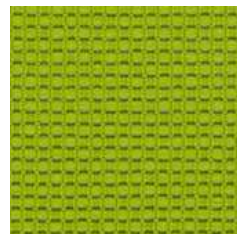
3032



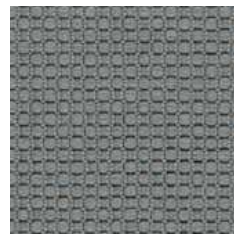
8027



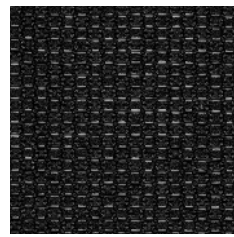
1008



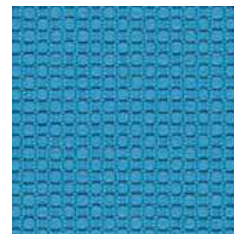
7011



8006

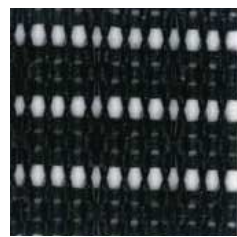


8033

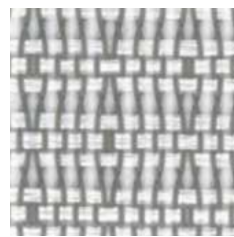


6031

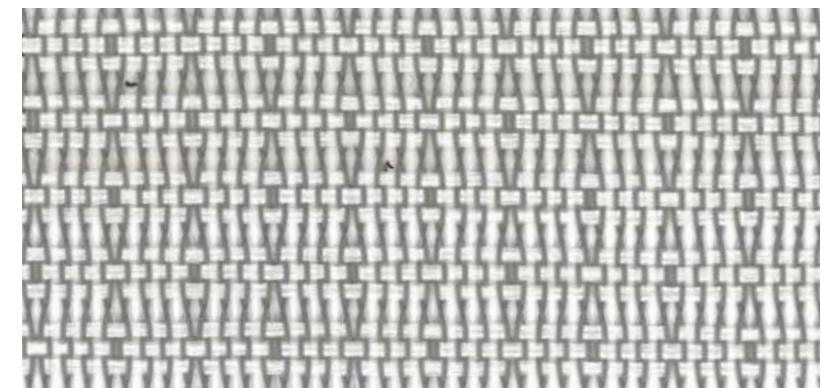
RETE R03



NK-00

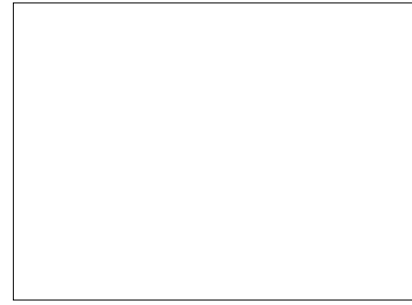


NK-10



NK-10

POLIPROPILENE / Polypropylene



BIANCO / WHITE
RAL 9010



NERO / BLACK
RAL 9011



ARANCIONE / ORANGE
SIMIL RAL 3022



VERDE / GREEN
PANTONE 553U



AZZURRO / LIGHT BLUE
NCS S 3010-B10G



BEIGE / BEIGE
NCS S 3005-Y80R

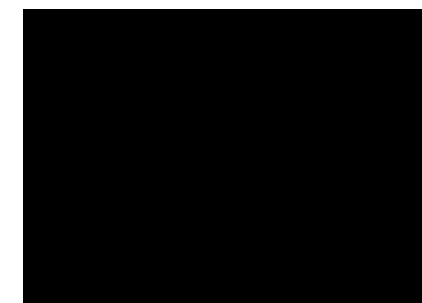


**ROSSO SCURO / DARK
RED**
NCS S 3560-Y90R

RIVESTIMENTO IN CUOIO / Saddle leather



NATURALE / NATURAL



NERO / BLACK

CLOP

Diemme.

POLIURETANO RIGIDO TECH /

Tech Polyurethane

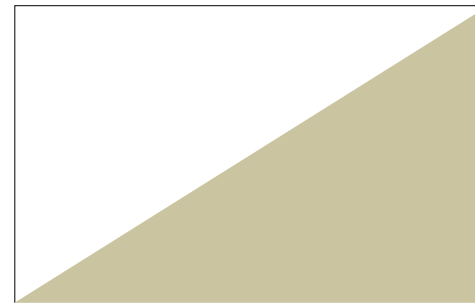


BIANCO / WHITE
RAL 9016



ANTRACITE / ANTHRACITE
RAL 7024

BICOLOR / Two-color shell



BIANCO / WHITE
RAL 9016
Fronte scocca / Inner part

BEIGE / BEIGE
RAL 1019
Retro scocca / Outside part



AVORIO / IVORY
RAL 1013
Fronte scocca / Inner part

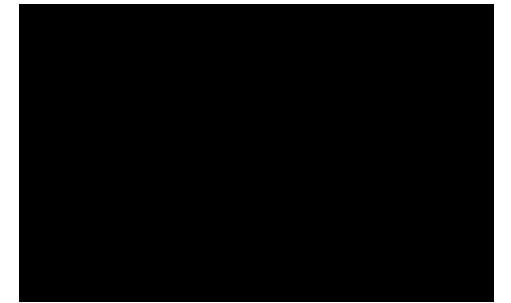
MOKA / MOKA
RAL 8019
Retro scocca / Outside part

EON

POLIPROPILENE / Polypropylene



BIANCO / WHITE
RAL 9003



NERO / BLACK
RAL 9011



MATTONE / BRICK
PANTONE 18-1248 TCX



VERDE / GREEN
SIMIL RAL 6005

KIRE



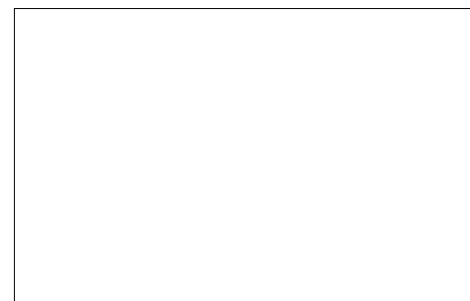
AZZURRO / LIGHT BLUE
NCS S 3010-B10G



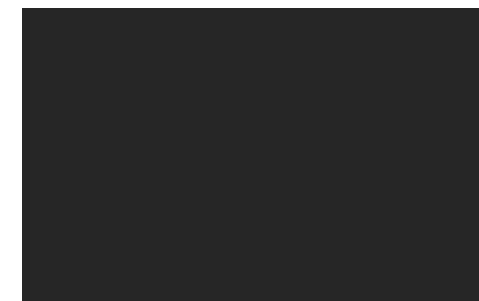
OCRA / OCHRE
PANTONE 7510L

MARGARITA - MARGARITA TABLE

MARGARITA - POLIETILENE / Polyethylene



BIANCO / WHITE
RAL 9010



ANTRACITE / ANTHRACITE
SIMIL PANTONE 425 C



GIALLO / YELLOW
SIMIL PANTONE 130 EC



GRIGIO / GREY
SIMIL PANTONE 413 EC



MATTONE / BRICK
PANTONE 18-1248 TCX

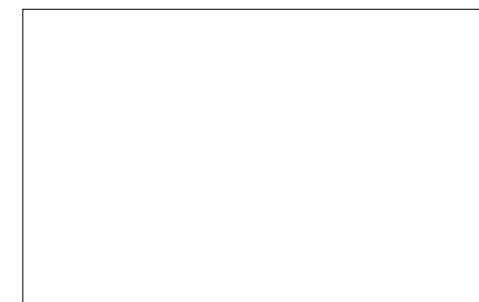


VERDE / GREEN
SIMIL PANTONE 583C

MARGARITA TABLE - POLIETILENE / Polyethylene



ANTRACITE / ANTHRACITE
SIMIL PANTONE 425 C



BIANCO / WHITE
RAL 9010

POLIPROPILENE / Polypropylene



ANTRACITE / ANTHRACITE
RAL 7024



BIANCO / WHITE
RAL 9003



BLU / BLUE
PANTONE 294C



GRIGIO / GREY
RAL 7040



NERO / BLACK
RAL 9005



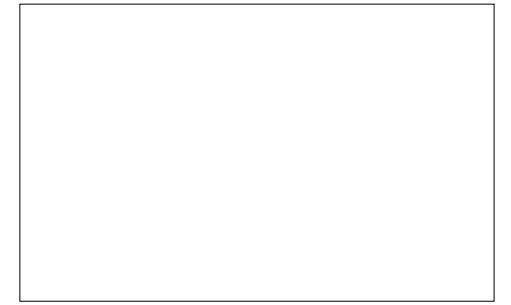
ROSSO / RED
PANTONE 201C

NEW BONN

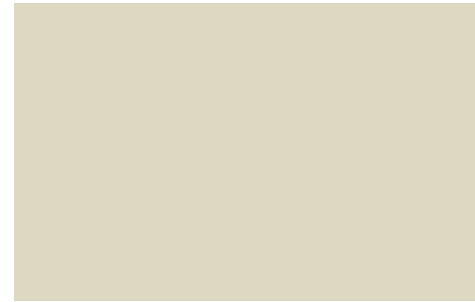
POLIPROPILENE / Polypropylene



NERO / BLACK
RAL 9005



BIANCO / WHITE
RAL 9003



SABBIA / SAND
PANTONE 401EC



GRIGIO / GREY
RAL 7040

SLIM

POLIPROPILENE / Polypropylene



NERO / BLACK
RAL 9011



BIANCO / WHITE
RAL 9003

SUNNY NEW